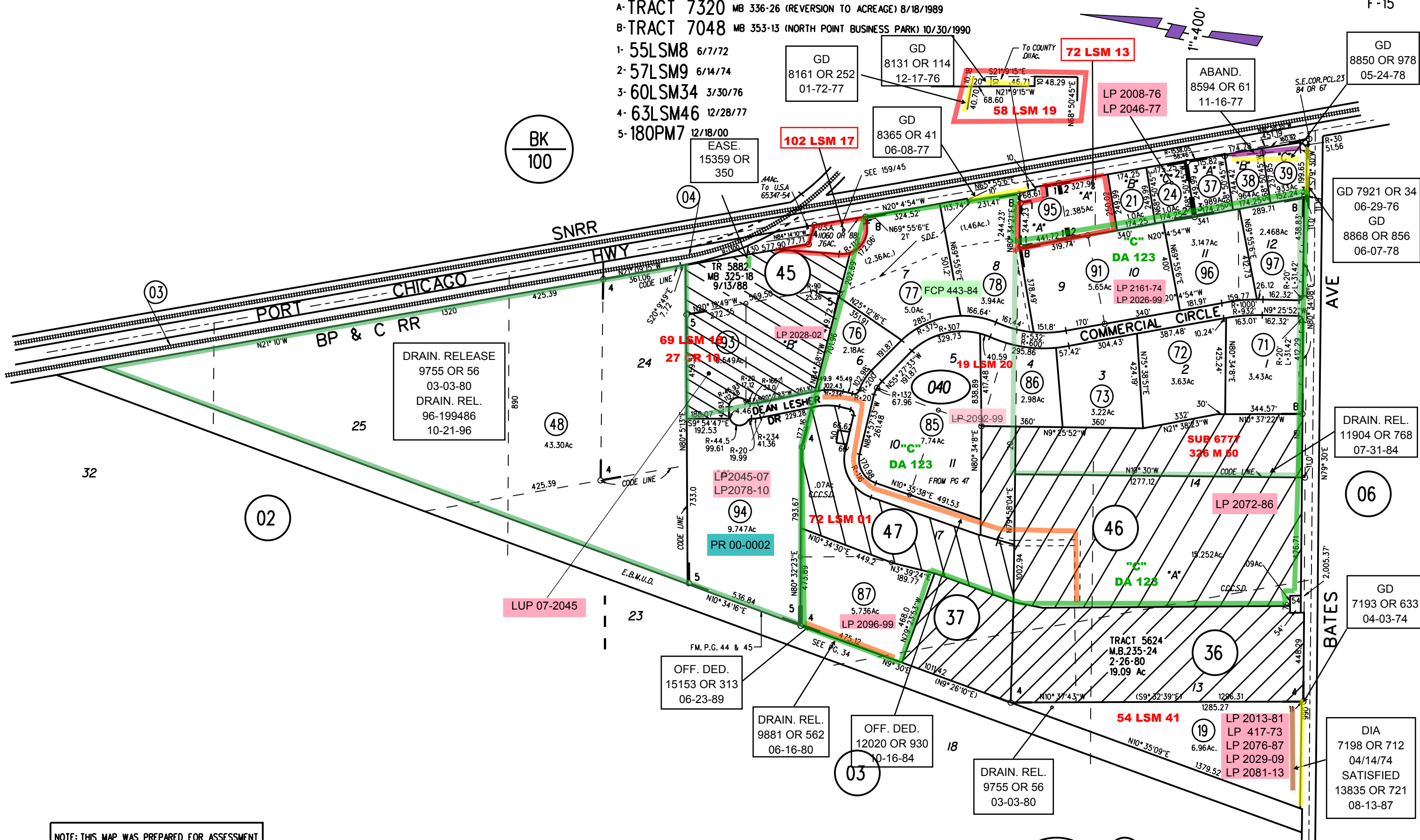


GOVERNMENT RANCH BK D-87 11/8/1884

E-15
F-15

- A- TRACT 7320 MB 336-26 (REVERSION TO ACREAGE) 8/18/1989
- B- TRACT 7048 MB 353-13 (NORTH POINT BUSINESS PARK) 10/30/1990
- 1- 55LSM8 6/7/72
- 2- 57LSM9 6/14/74
- 3- 60LSM34 3/30/76
- 4- 63LSM46 12/28/77
- 5- 180PM7 12/18/00



BK
100

NOTE: THIS MAP WAS PREPARED FOR ASSESSMENT PURPOSES ONLY. NO LIABILITY IS ASSUMED FOR THE ACCURACY OF THE INFORMATION DELINEATED HEREON. ASSESSOR'S PARCELS MAY NOT COMPLY WITH LOCAL LOT SPLIT OR BUILDING SITE ORDINANCES.

ASSESSOR'S MAP
BOOK 159 PAGE 4
CONTRA COSTA COUNTY, CALIF.

Sanborn Date : 12/15/1998