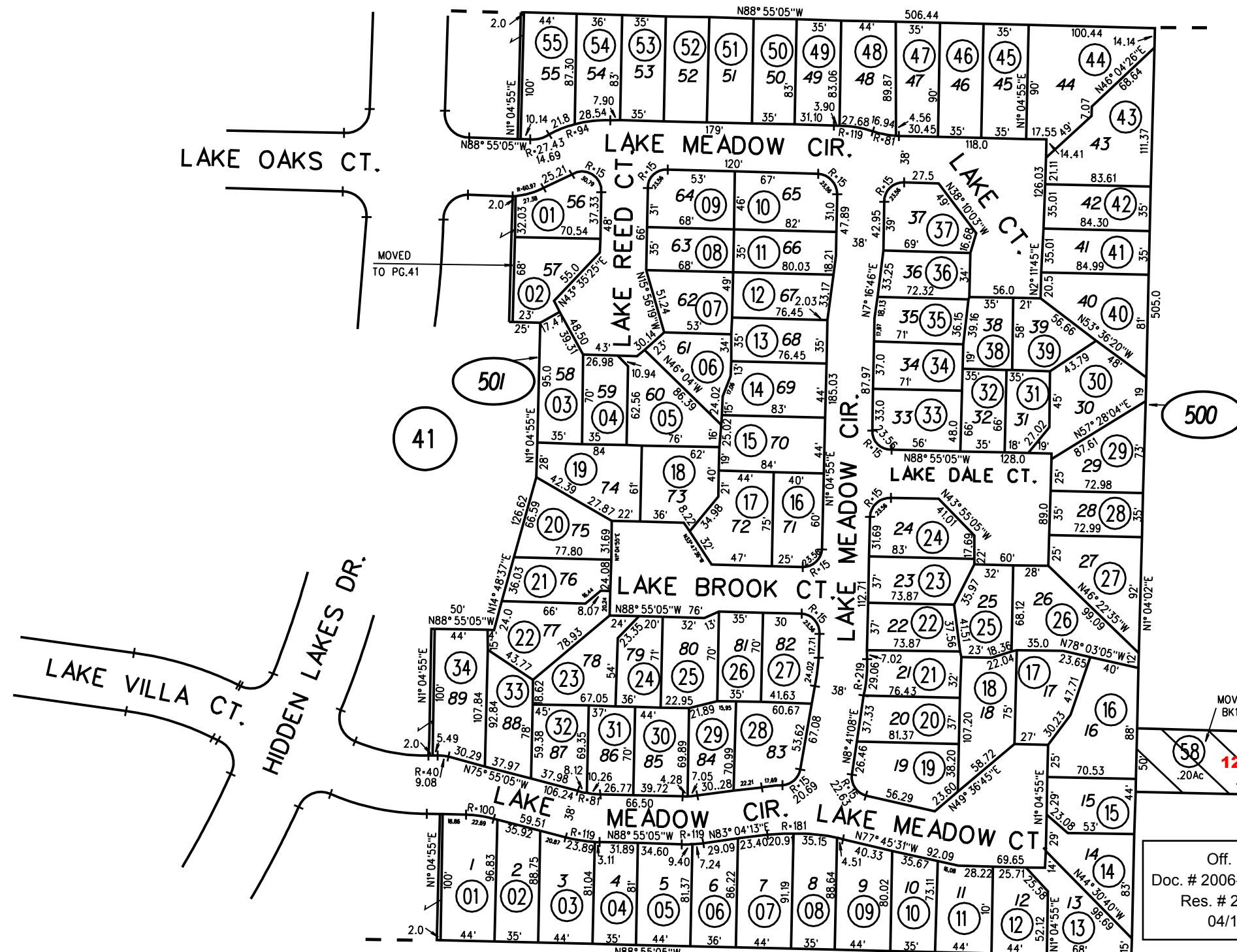
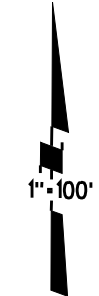


01



MOVED TO PG.41

MOVED TO BK125 PG27

5' DED TO COUNTY

P.B. 125

DIA
Doc. # 2006-0113428-00
Res. # 2006/183
04/12/06

Off. Ded.
Doc. # 2006-0113427-00
Res. # 2006/182
04/12/06

HIGH ST.

500
501
3/25/13

NOTE: THIS MAP WAS PREPARED FOR ASSESSMENT PURPOSES ONLY. NO LIABILITY IS ASSUMED FOR THE ACCURACY OF THE INFORMATION DELINEATED HEREON. ASSESSOR'S PARCELS MAY NOT COMPLY WITH LOCAL LOT SPLIT OR BUILDING SITE ORDINANCES.

42