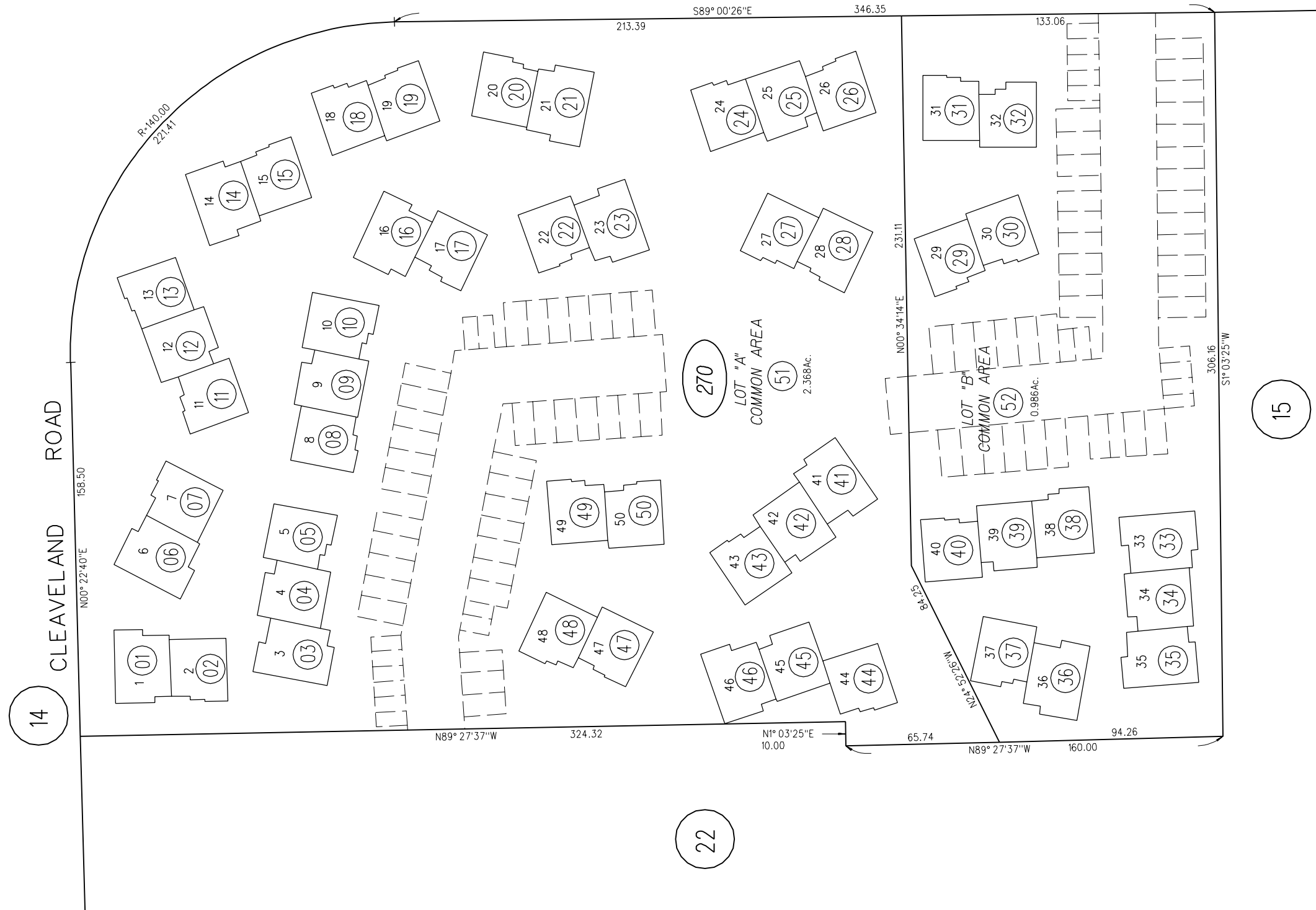


1982 ROLL - TRACT 6134 TWO WORLDS (CONDO.) M.B.260-31
 C.C.&R'S 10706/624 3-12-82
 C.C.&R'S 10808/398 6-11-82

WOODSWORTH LANE



NOTE: THIS MAP WAS PREPARED FOR ASSESSMENT PURPOSES ONLY. NO LIABILITY IS ASSUMED FOR THE ACCURACY OF THE INFORMATION DELINEATED HEREON. ASSESSOR'S PARCELS MAY NOT COMPLY WITH LOCAL LOT SPLIT OR BUILDING SITE ORDINANCES.

270

FM.150/14,15 2-25-82

ASSESSOR'S MAP

BOOK 150 PAGE 27

CONTRA COSTA COUNTY, CALIF.