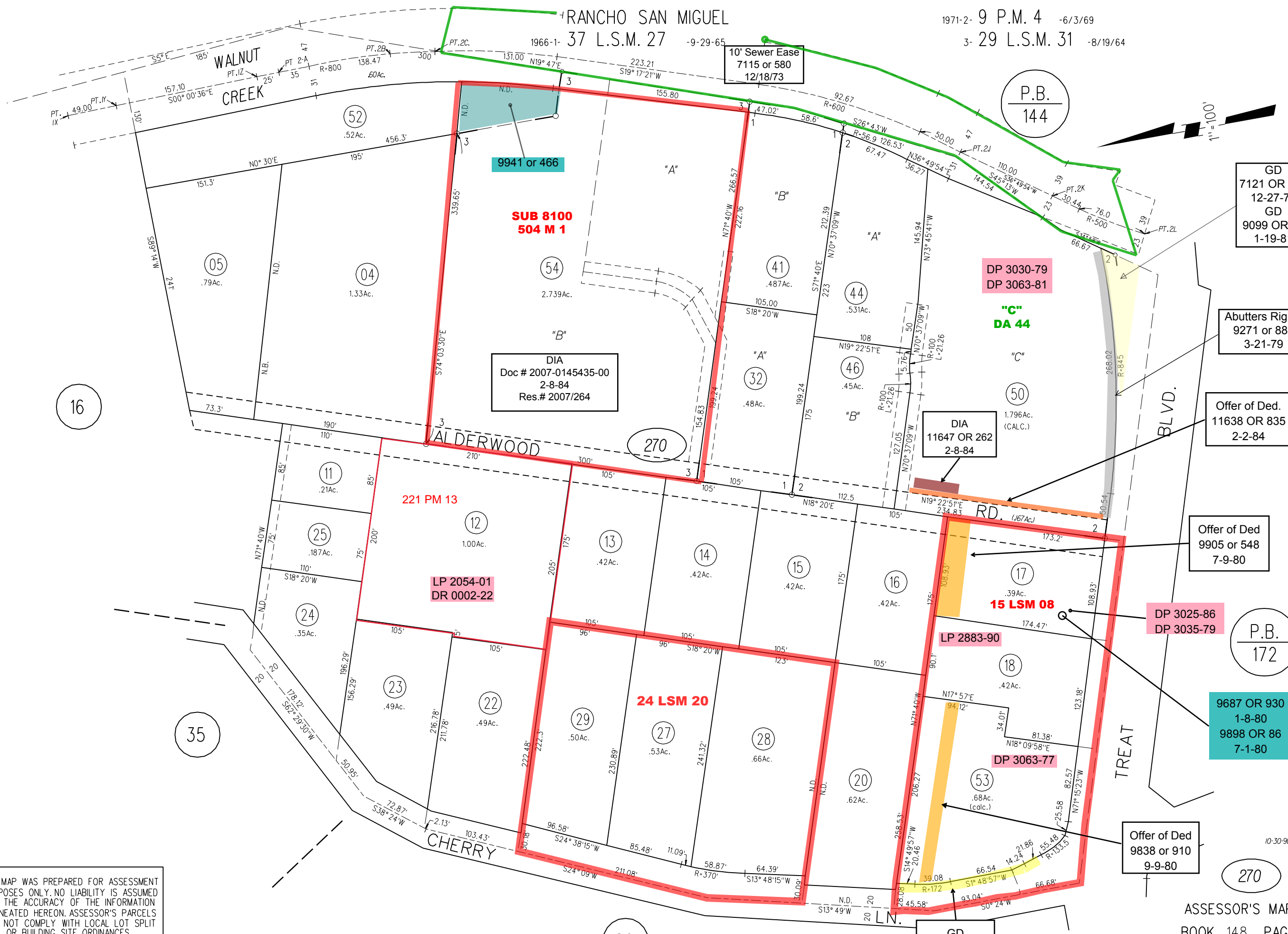


RANCHO SAN MIGUEL
37 L.S.M. 27

1971-2-9 P.M. 4 -6/3/69
3-29 L.S.M. 31 -8/19/64



52
.52Ac.

05
.79Ac.

04
1.33Ac.

9941 or 466

SUB 8100
504 M 1

54
2.739Ac.

DIA
Doc # 2007-0145435-00
2-8-84
Res.# 2007/264

41
.487Ac.

32
.48Ac.

44
.531Ac.

46
.45Ac.

DP 3030-79
DP 3063-81

"C"
DA 44

50
1.796Ac.
(CALC.)

DIA
11647 OR 262
2-8-84

16

ALDERWOOD

270

221 PM 13

LP 2054-01
DR 0002-22

11
.21Ac.

25
.187Ac.

24
.35Ac.

12
1.00Ac.

13
.42Ac.

14
.42Ac.

15
.42Ac.

16
.42Ac.

17
.39Ac.

15 LSM 08

LP 2883-90

DP 3025-86
DP 3035-79

P.B.
172

9687 OR 930
1-8-80
9898 OR 86
7-1-80

35

23
.49Ac.

22
.49Ac.

29
.50Ac.

27
.53Ac.

28
.66Ac.

20
.62Ac.

18
.42Ac.

53
.68Ac.
(calc.)

Offer of Ded
9838 or 910
9-9-80

CHERRY

TREAT

BLVD.

26

GD
8886 or 113
6-19-78

3-24-88
FM. 43-25,28 7-21-64

NOTE: THIS MAP WAS PREPARED FOR ASSESSMENT PURPOSES ONLY. NO LIABILITY IS ASSUMED FOR THE ACCURACY OF THE INFORMATION DELINEATED HEREON. ASSESSOR'S PARCELS MAY NOT COMPLY WITH LOCAL LOT SPLIT OR BUILDING SITE ORDINANCES.