

RANCHO SAN MIGUEL (POR LOT 1, VALLEY LAND)

A- TRACT 2766 (TANGLEWOOD UNIT NO 2) MB 77-3

B- TRACT 3166 (WOODMOOR) MB 98-1

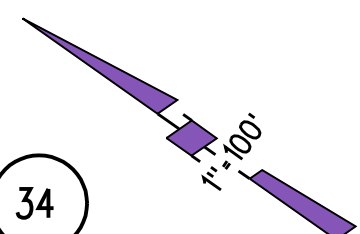
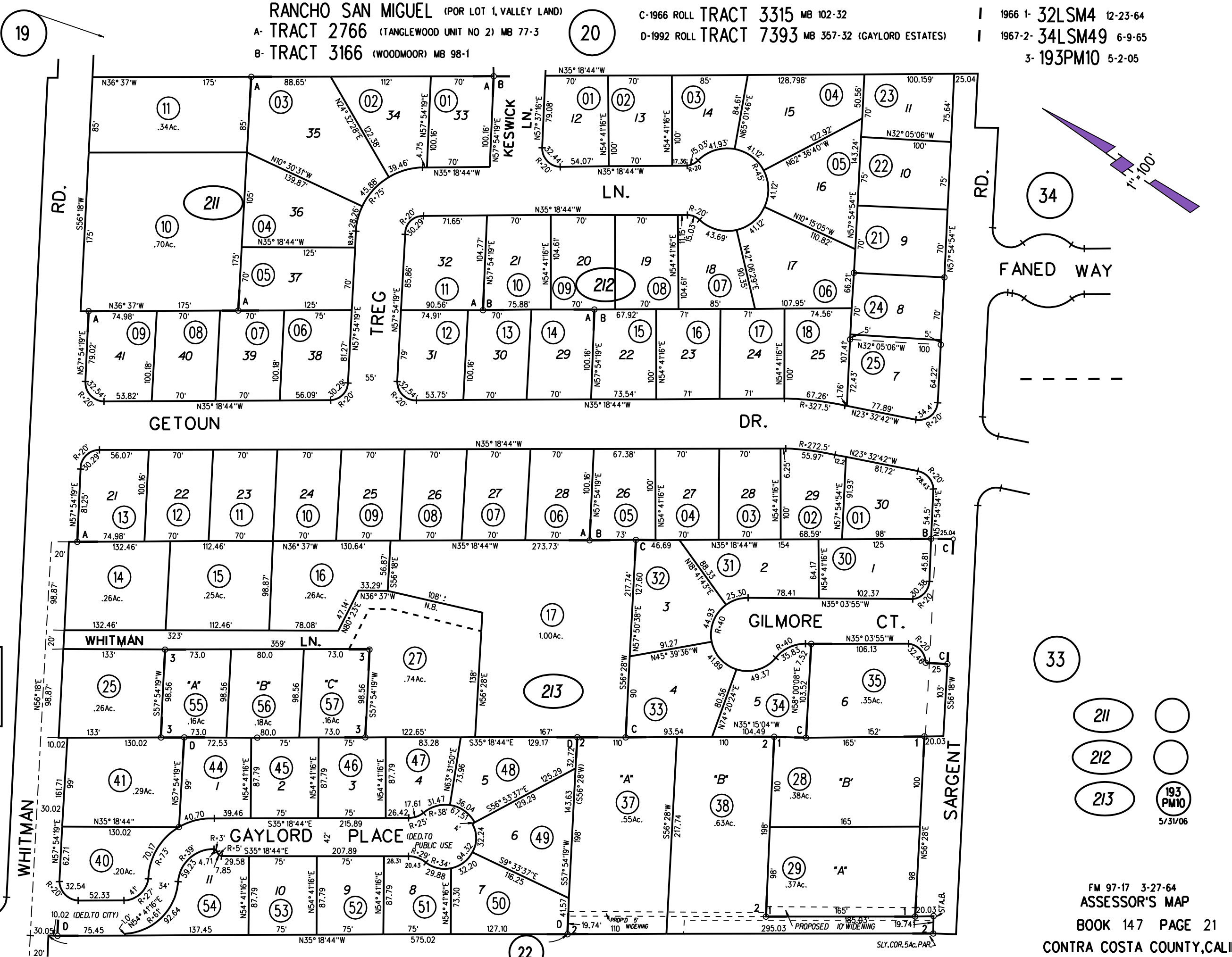
C-1966 ROLL TRACT 3315 MB 102-32

D-1992 ROLL TRACT 7393 MB 357-32 (GAYLORD ESTATES)

1966 1- 32LSM4 12-23-64

1967-2- 34LSM49 6-9-65

3- 193PM10 5-2-05



NOTE: THIS MAP WAS PREPARED FOR ASSESSMENT PURPOSES ONLY. NO LIABILITY IS ASSUMED FOR THE ACCURACY OF THE INFORMATION DELINEATED HEREON. ASSESSOR'S PARCELS MAY NOT COMPLY WITH LOCAL LOT SPLIT OR BUILDING SITE ORDINANCES.

- 211
- 212
- 213
- 193 PM10 5/31/06

FM 97-17 3-27-64
ASSESSOR'S MAP
BOOK 147 PAGE 21
CONTRA COSTA COUNTY, CALIF.
Sanborn Date : 23/04/1999