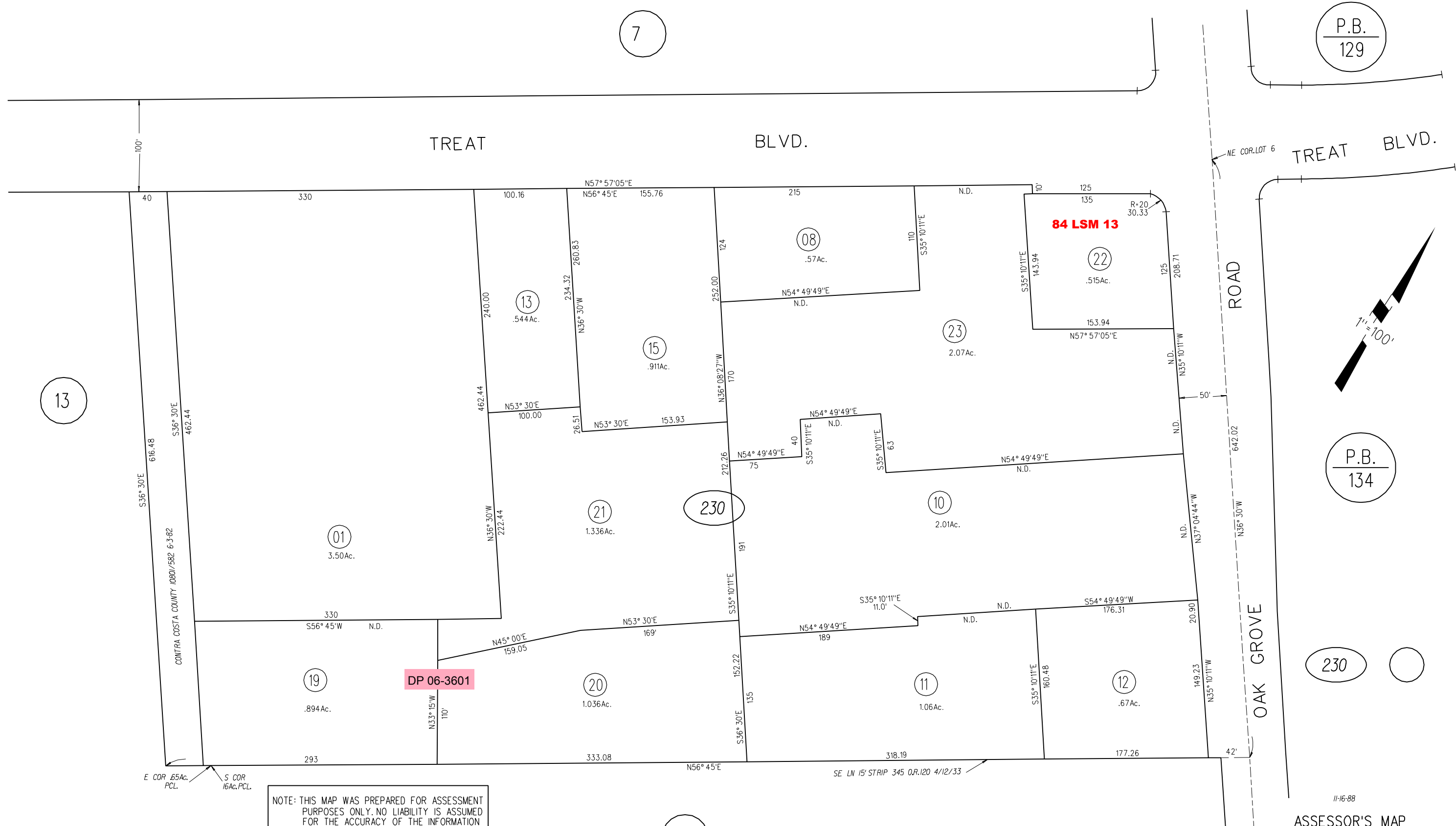


RO. SAN MIGUEL (POR. LOT 6 VALLEY LAND)



NOTE: THIS MAP WAS PREPARED FOR ASSESSMENT PURPOSES ONLY. NO LIABILITY IS ASSUMED FOR THE ACCURACY OF THE INFORMATION DELINEATED HEREON. ASSESSOR'S PARCELS MAY NOT COMPLY WITH LOCAL LOT SPLIT OR BUILDING SITE ORDINANCES.

P.B.
129

P.B.
134

230

11-16-88

13

7

13

100'

40

616.48

S36° 30'E

CONTRA COSTA COUNTY 08801/582 6-3-82

S36° 30'E

462.44

E COR .65Ac. PCL.

S COR .16Ac. PCL.

293

N33° 15'W

110'

330

S56° 45'W

N.D.

330

N36° 30'W

222.44

462.44

N53° 30'E

100.00

N53° 30'E

153.93

26.51

N36° 08'27"W

170

252.00

124

N57° 57'05"E

155.76

N56° 45'E

100.16

234.32

N36° 30'W

260.83

240.00

N54° 49'49"E

N.D.

215

S35° 10'11"E

110

N.D.

125

R=20

30.33

125

N35° 10'11"W

208.71

N.D.

50'

N.D.

N37° 04'44"W

642.02

ROAD

OAK GROVE

N36° 30'W

642.02

NE COR. LOT 6

TREAT BLVD.

125

S35° 10'11"E

143.94

N57° 57'05"E

153.94

N.D.

2.07Ac.

N54° 49'49"E

N.D.

40

S35° 10'11"E

63

S35° 10'11"E

63

N54° 49'49"E

N.D.

75

N54° 49'49"E

N.D.

40

S35° 10'11"E

40

N54° 49'49"E

N.D.

212.26

S35° 10'11"E

191

212.26

N53° 30'E

169'

N45° 00'E

159.05

N56° 45'E

333.08

SE LN 15' STRIP 345 O.R. 120 4/12/33

318.19

N56° 45'E

177.26

S35° 10'11"E

160.48

S54° 49'49"W

176.31

N.D.

20.90

N35° 10'11"W

149.23

42'

11-16-88