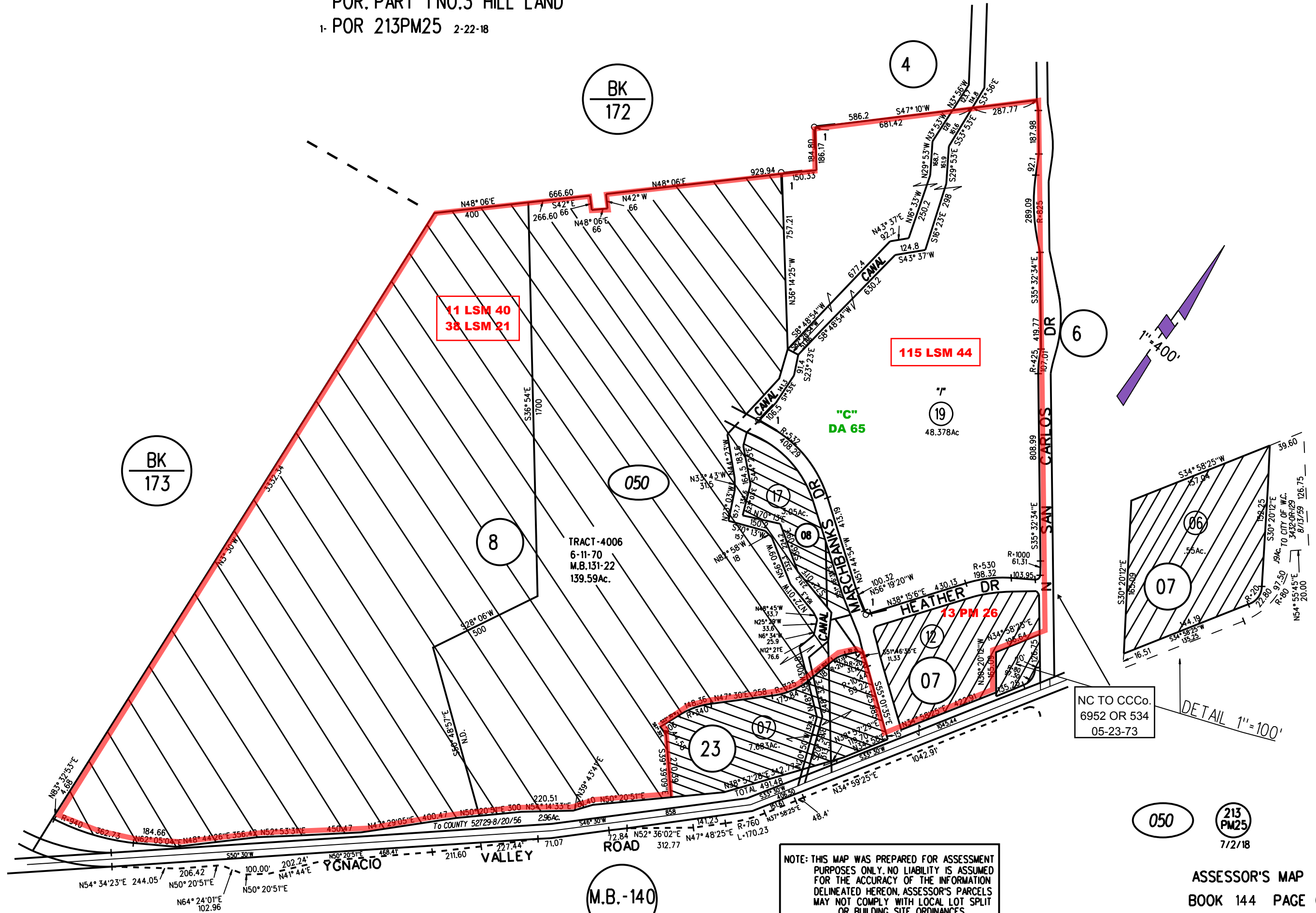


RO. SAN MIGUEL (POR. LOT 3 VALLEY LAND)
 POR. PART 1 NO.3 HILL LAND
 1- POR 213PM25 2-22-18



11 LSM 40
38 LSM 21

115 LSM 44

NC TO CCCo.
6952 OR 534
05-23-73

NOTE: THIS MAP WAS PREPARED FOR ASSESSMENT PURPOSES ONLY. NO LIABILITY IS ASSUMED FOR THE ACCURACY OF THE INFORMATION DELINEATED HEREON. ASSESSOR'S PARCELS MAY NOT COMPLY WITH LOCAL LOT SPLIT OR BUILDING SITE ORDINANCES.

050 213 PM25 7/2/18