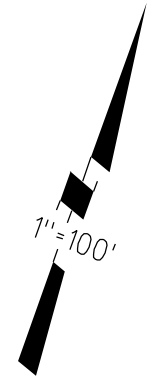
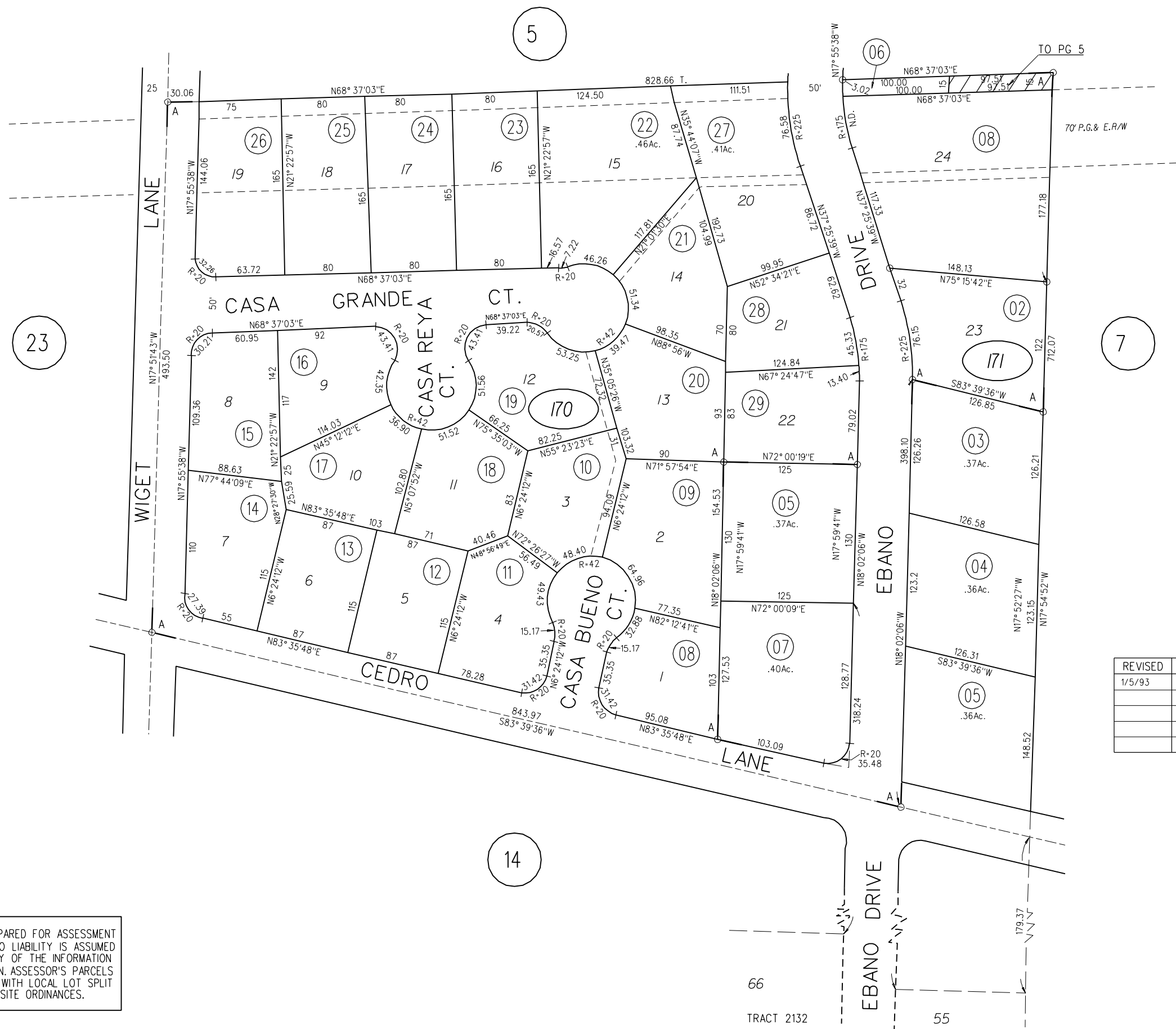


POR. RO. SAN MIGUEL
(POR. LOT 5 VALLEY LAND)
A-1969 ROLL TRACT 3774 (ENCINA GRANDE NO. 3) M.B. 120-46



23

7

14

REVISED	CHANGE	BY
1/5/93	171-007 To PG 5	TA

NOTE: THIS MAP WAS PREPARED FOR ASSESSMENT PURPOSES ONLY. NO LIABILITY IS ASSUMED FOR THE ACCURACY OF THE INFORMATION DELINEATED HEREON. ASSESSOR'S PARCELS MAY NOT COMPLY WITH LOCAL LOT SPLIT OR BUILDING SITE ORDINANCES.

142-170-01 F.M.L.Y. 142-150-01

170 171

66
TRACT 2132

55