

RANCHO SAN MIGUEL (POR LOT 5, VALLEY LAND)

1968-1- RECORD OF SURVEY 48LSMB 5/17/67

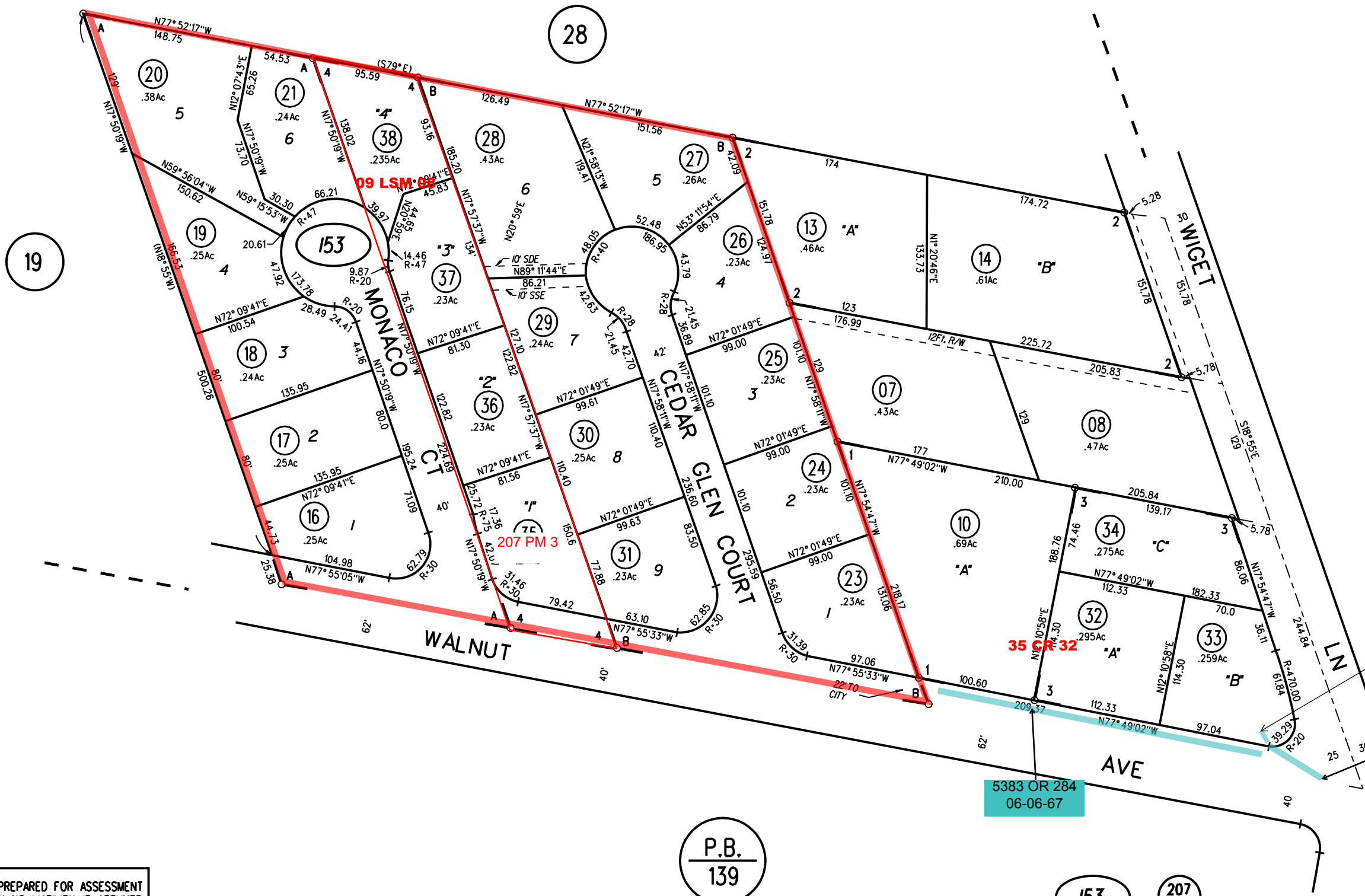
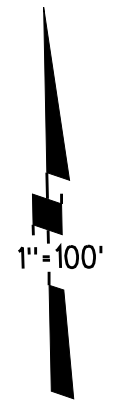
1969-2- 6PM25 12/4/68

1988-A- TRACT 6948 MB 320-22 (MONACO COURT)

1997-B- TRACT 8019 MB 389-36 (CEDAR GLEN)

3- 196PM5 3/23/06

4- 207PM3 3/14/12



NOTE: THIS MAP WAS PREPARED FOR ASSESSMENT PURPOSES ONLY. NO LIABILITY IS ASSUMED FOR THE ACCURACY OF THE INFORMATION DELINEATED HEREON. ASSESSOR'S PARCELS MAY NOT COMPLY WITH LOCAL LOT SPLIT OR BUILDING SITE ORDINANCES.

P.B.
139

5383 OR 284
06-06-67

5668 OR 176
07-17-68
DWG. B4061C-68

5668 OR 178
07-17-68
DWG. B4061C-68

ASSESSOR'S MAP
BOOK 142 PAGE 15
CONTRA COSTA COUNTY, CALIF.

Sanborn Date : 23/04/1999