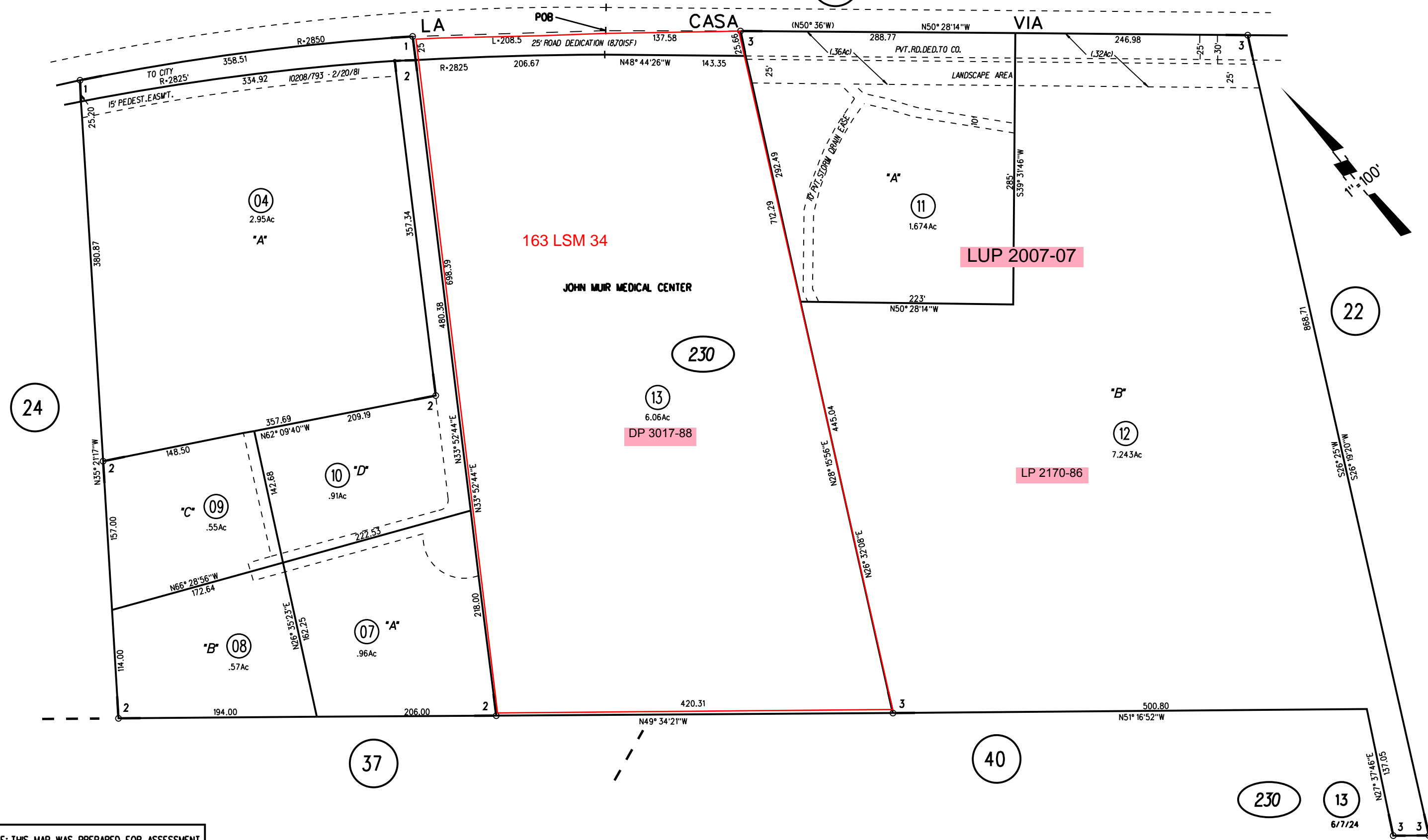


RO. SAN MIGUEL
PART 1 NO. 3 HILL LAND
NO. 4 HILL LAND

1- 65P.M.24&25 5-2-78
2- 70P.M.13 9-21-78

3- 149P.M.49 12/6/90

13



NOTE: THIS MAP WAS PREPARED FOR ASSESSMENT PURPOSES ONLY. NO LIABILITY IS ASSUMED FOR THE ACCURACY OF THE INFORMATION DELINEATED HEREON. ASSESSOR'S PARCELS MAY NOT COMPLY WITH LOCAL LOT SPLIT OR BUILDING SITE ORDINANCES.

230 13
677/24
100-5 (5-71) N49° 52'14"W 37.99

ASSESSOR'S MAP
BOOK 140 PAGE 23
CONTRA COSTA COUNTY, CALIF.

Sanborn Date : 23/04/1999