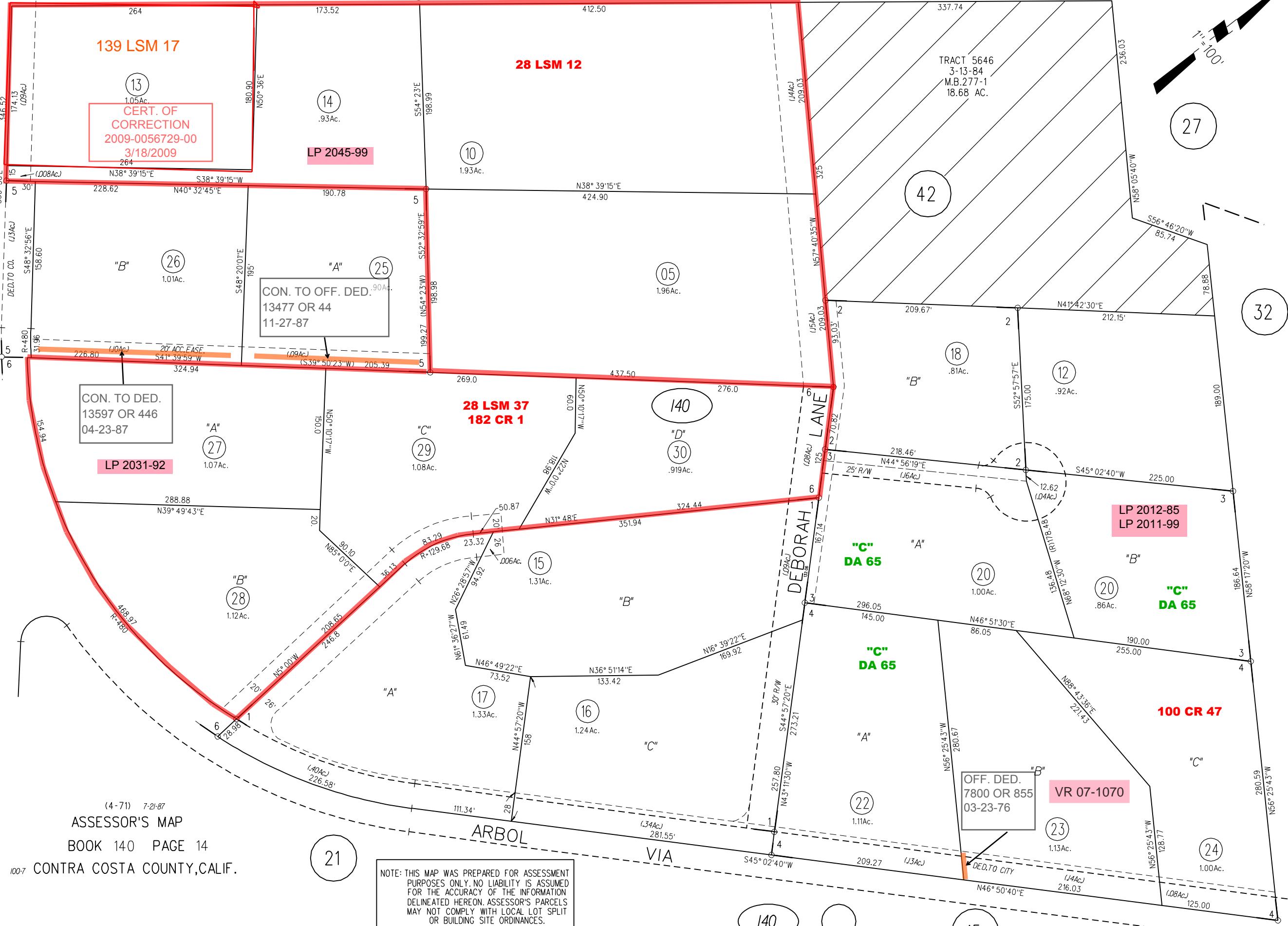
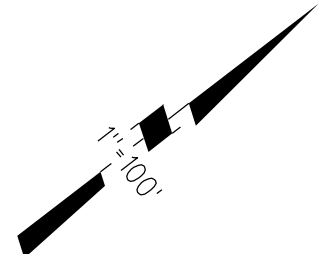


6- 128PM17 4-8-87
3- 33PM8 4-4-74

RO. SAN MIGUEL NO. 4 HILL LAND
1-1969- 7 P. M. 14 1-17-69 S37° 23'45"W
2- 49L.S.M.7 8-2-67

5- 126P.M.43 2-27-87
4- 43P.M.34 3-5-76



(4-71) 7-21-87
ASSESSOR'S MAP
BOOK 140 PAGE 14
CONTRA COSTA COUNTY, CALIF.

NOTE: THIS MAP WAS PREPARED FOR ASSESSMENT PURPOSES ONLY. NO LIABILITY IS ASSUMED FOR THE ACCURACY OF THE INFORMATION DELINEATED HEREON. ASSESSOR'S PARCELS MAY NOT COMPLY WITH LOCAL LOT SPLIT OR BUILDING SITE ORDINANCES.

22

27

32

21

140

15