

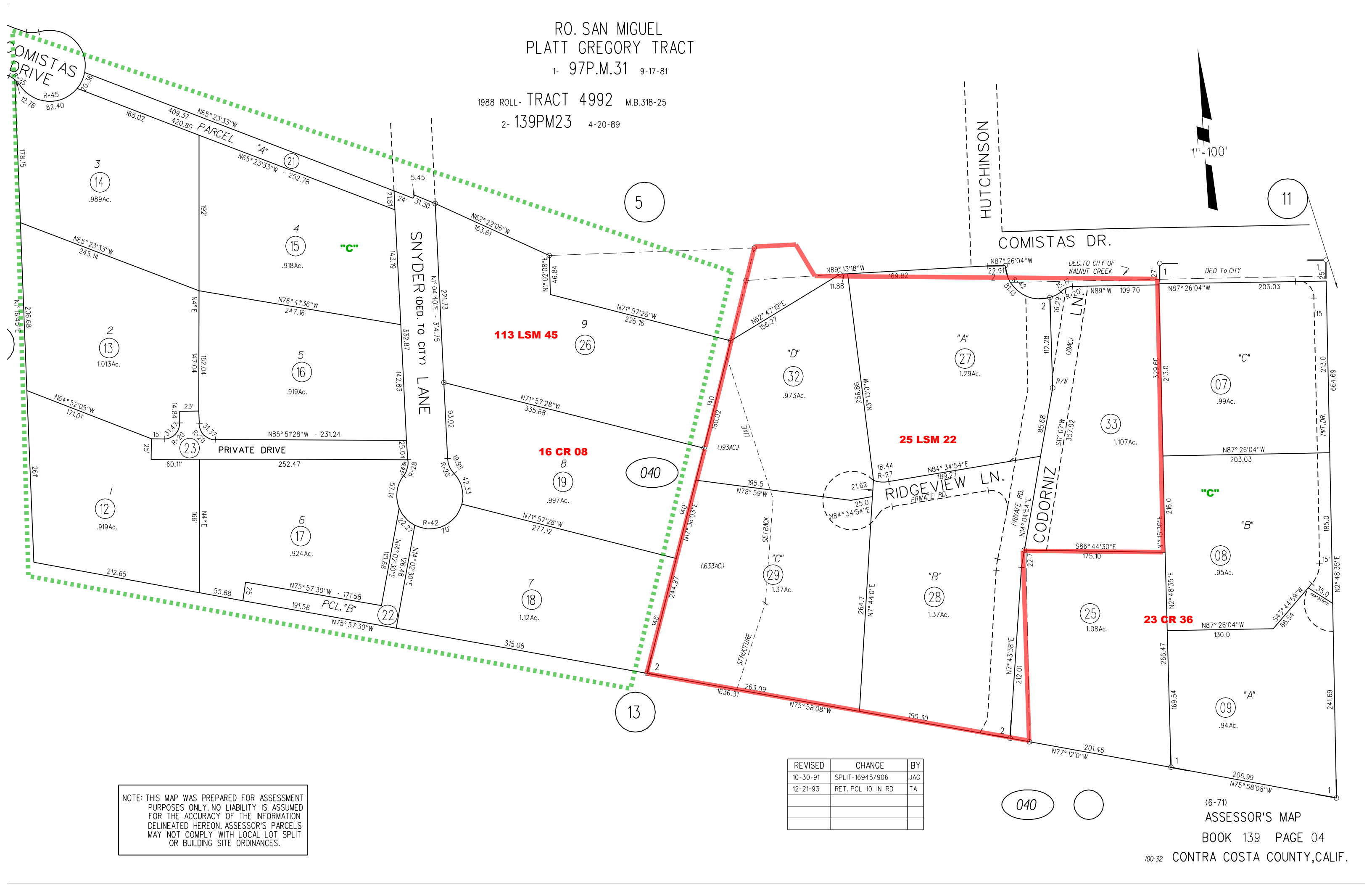
RO. SAN MIGUEL
PLATT GREGORY TRACT

1- 97P.M.31 9-17-81

1988 ROLL- TRACT 4992 M.B.318-25

2- 139PM23 4-20-89

1" = 100'



NOTE: THIS MAP WAS PREPARED FOR ASSESSMENT PURPOSES ONLY. NO LIABILITY IS ASSUMED FOR THE ACCURACY OF THE INFORMATION DELINEATED HEREON. ASSESSOR'S PARCELS MAY NOT COMPLY WITH LOCAL LOT SPLIT OR BUILDING SITE ORDINANCES.

REVISED	CHANGE	BY
10-30-91	SPLIT-16945/906	JAC
12-21-93	RET. PCL 10 IN RD	TA

(6-71)
ASSESSOR'S MAP

BOOK 139 PAGE 04

100-32 CONTRA COSTA COUNTY, CALIF.