

- 1- 7PM44 3/26/69
- 2- 26PM49 3/9/73
- 3- 201PM26 10/31/07

02

GD 6542 OR 302
12-16-71

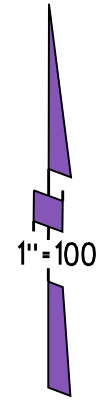
R/W 5840 OR 54
03-26-69

Cert. of Corr.
7490 OR 74
4-29-75

GD DRAIN.
6561 OR 104
01-11-72

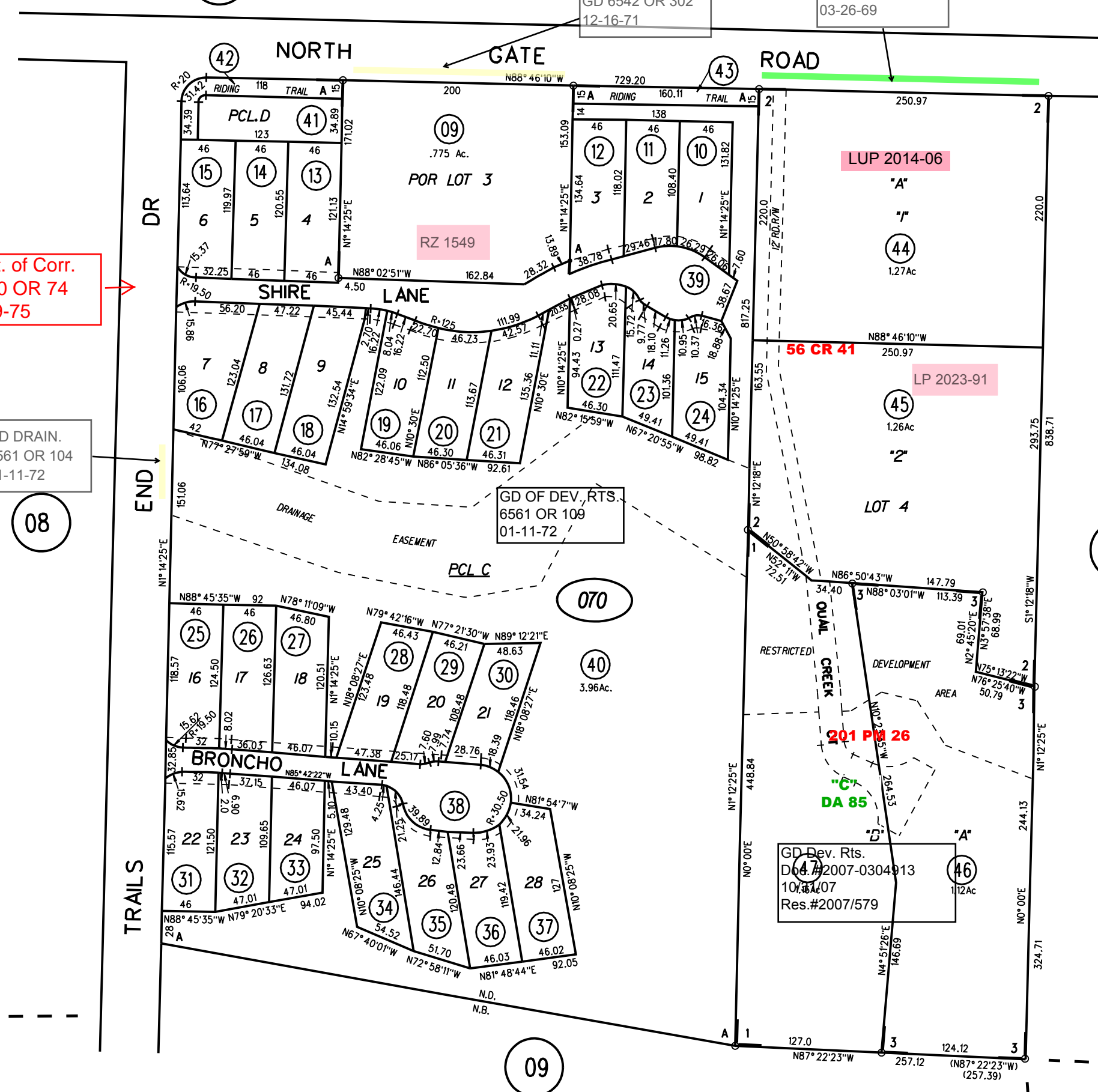
GD OF DEV. RTS.
6561 OR 109
01-11-72

GD Dev. Rts.
Doc. # 2007-0304913
10/16/07
Res. # 2007/579



NOTE: THIS MAP WAS PREPARED FOR ASSESSMENT PURPOSES ONLY. NO LIABILITY IS ASSUMED FOR THE ACCURACY OF THE INFORMATION DELINEATED HEREON. ASSESSOR'S PARCELS MAY NOT COMPLY WITH LOCAL LOT SPLIT OR BUILDING SITE ORDINANCES.

070 201 PM26 6/4/08



08

070

40
3.96 Ac.

06

09

070

201 PM26
6/4/08