

A- UNDIVIDED LANDS IN THE ESTATE OF F. GALINDO M.B. "D"-73

RANCHO MONTE DEL DIABLO
RANCHO SAN MIGUEL

3- 95P.M.31 6-17-81

B- POR TR 8437 M.B.438-15 (MONTECITO)

1- 60 L.S.M. 18 1-27-76

2- 53 L.S.M.27 12-21-70

EASE.
11795 OR 233
05-17-84

BK
134

BK
133

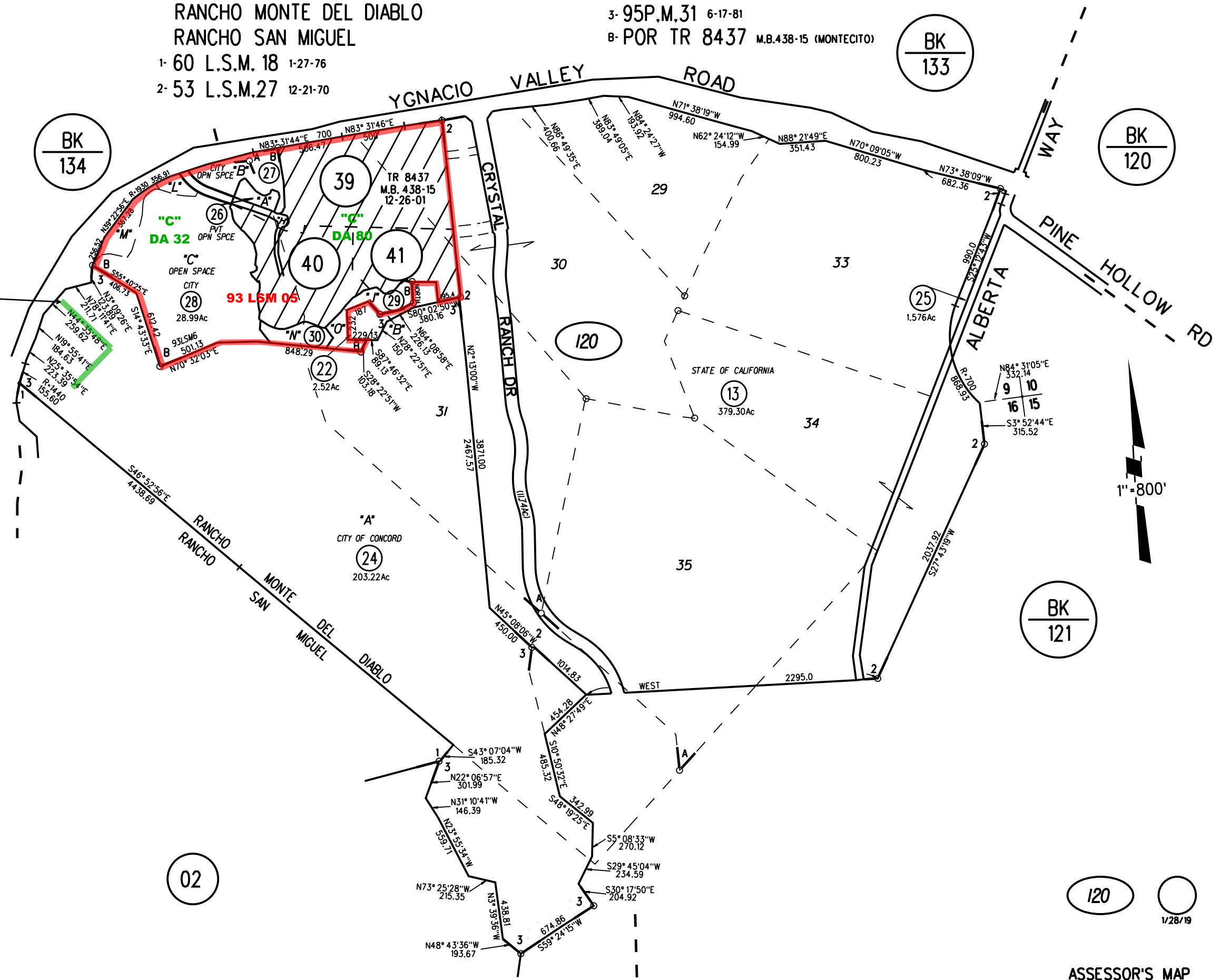
BK
120

BK
121

02

120

1/28/19



NOTE: THIS MAP WAS PREPARED FOR ASSESSMENT PURPOSES ONLY. NO LIABILITY IS ASSUMED FOR THE ACCURACY OF THE INFORMATION DELINEATED HEREON. ASSESSOR'S PARCELS MAY NOT COMPLY WITH LOCAL LOT SPLIT OR BUILDING SITE ORDINANCES.

ASSESSOR'S MAP
BOOK 135 PAGE 12
CONTRA COSTA COUNTY, CALIF.

Sanborn Date : 16/04/1999