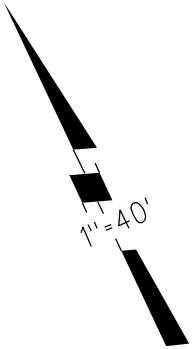


CLAYTON

ROAD

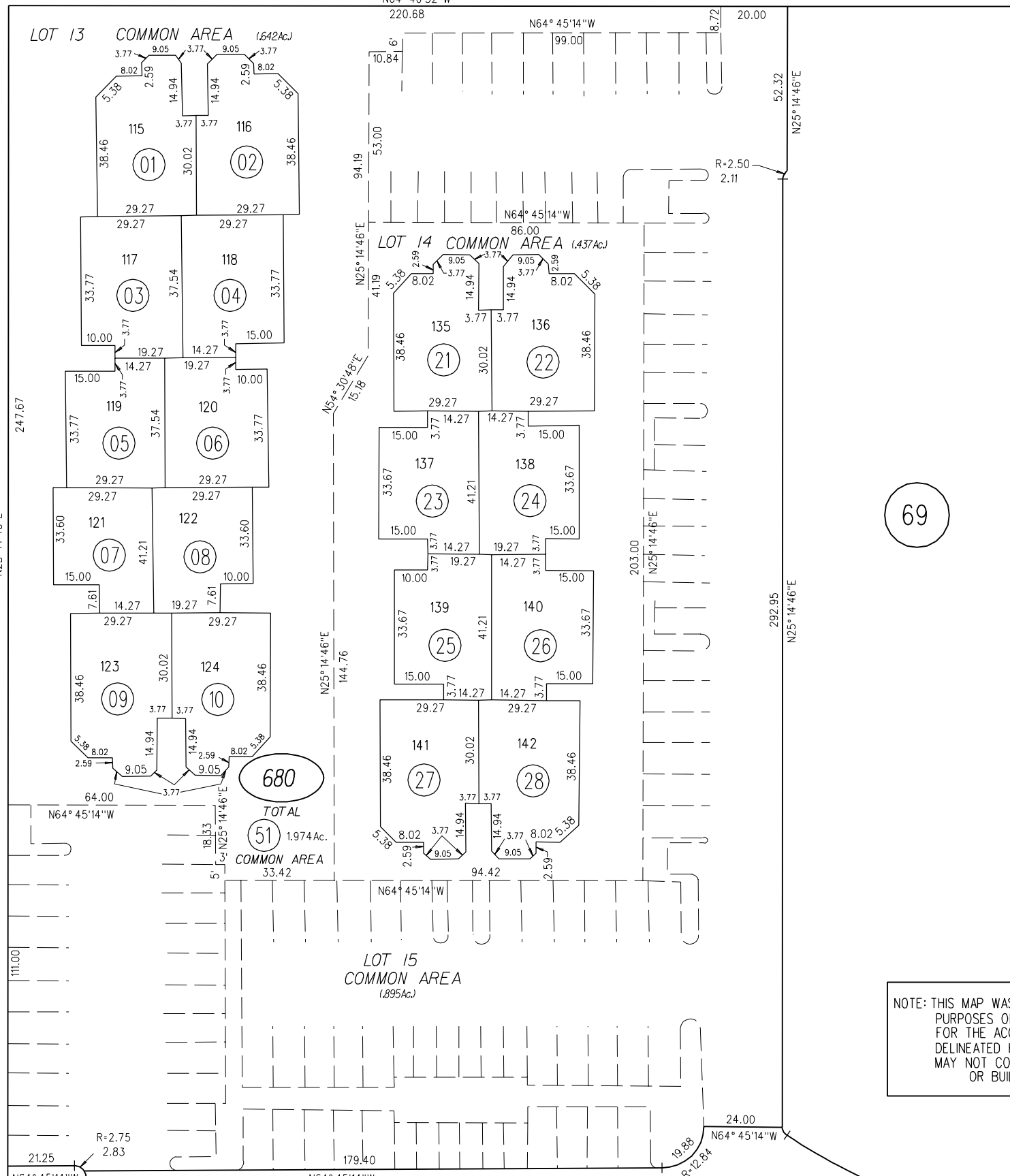
P.B.
116

1984 ROLL- TRACT 6276 "VALLEY TERRACE CONDO." M.B.272-1
PHASE FOUR DECLARATION OF ANNEX. 12052/421 11-6-84



21

ST. JAMES PARKWAY



69

NOTE: THIS MAP WAS PREPARED FOR ASSESSMENT PURPOSES ONLY. NO LIABILITY IS ASSUMED FOR THE ACCURACY OF THE INFORMATION DELINEATED HEREON. ASSESSOR'S PARCELS MAY NOT COMPLY WITH LOCAL LOT SPLIT OR BUILDING SITE ORDINANCES.

67

VALLEY CREST LOT 1 DRIVE

64

FIRST LEVEL

680

680