

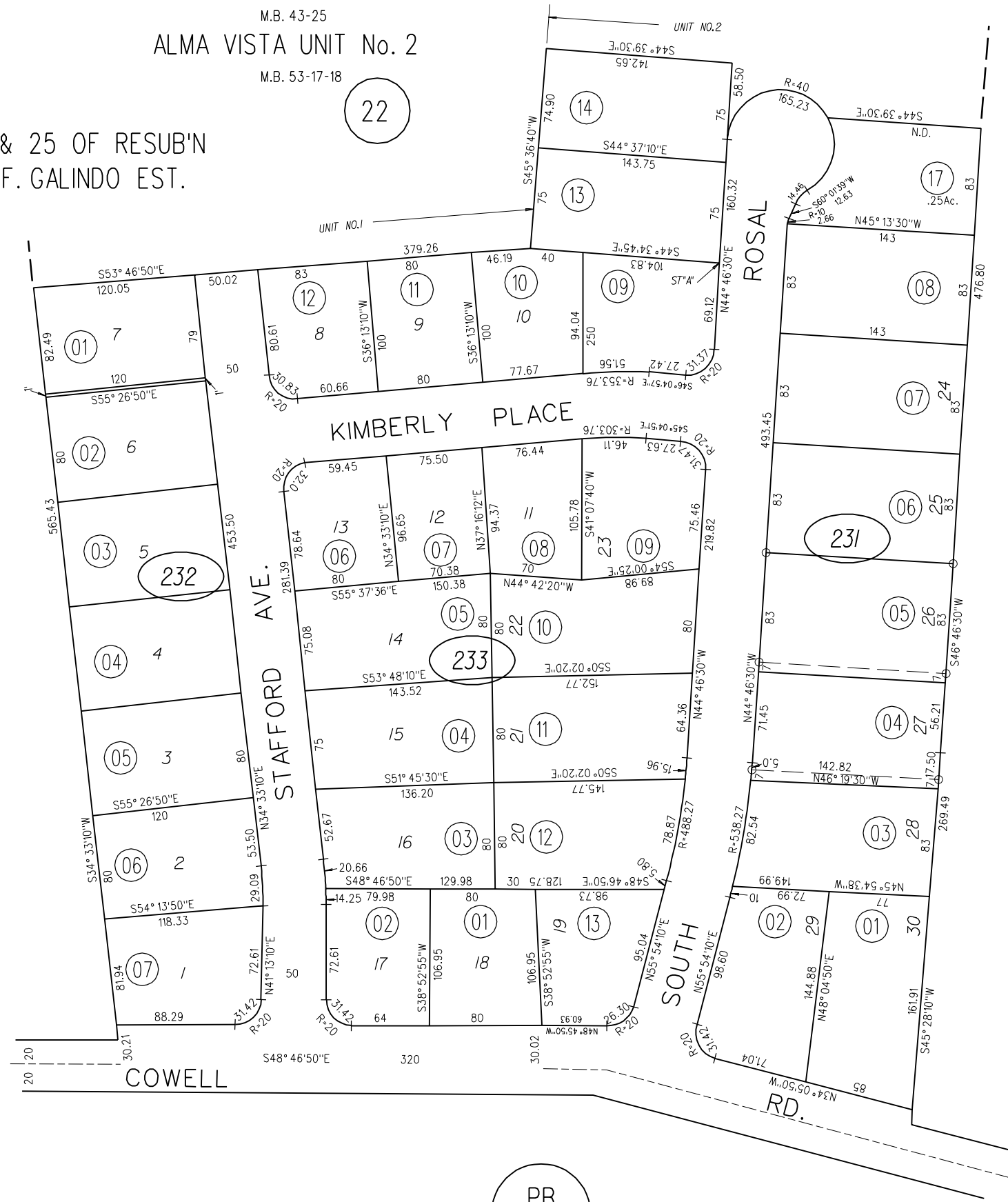
ALMA VISTA-UNIT No. 1

M.B. 43-25

ALMA VISTA UNIT No. 2

M.B. 53-17-18

POR. LOTS 24 & 25 OF RESUB'N
OF UNDIV. LDS. F. GALINDO EST.



24

22

20

PB
130

- 231 ○
- 232 ○
- 233 ○

NOTE: THIS MAP WAS PREPARED FOR ASSESSMENT PURPOSES ONLY. NO LIABILITY IS ASSUMED FOR THE ACCURACY OF THE INFORMATION DELINEATED HEREON. ASSESSOR'S PARCELS MAY NOT COMPLY WITH LOCAL LOT SPLIT OR BUILDING SITE ORDINANCES.