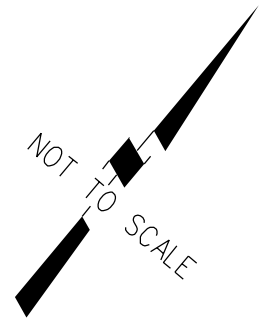


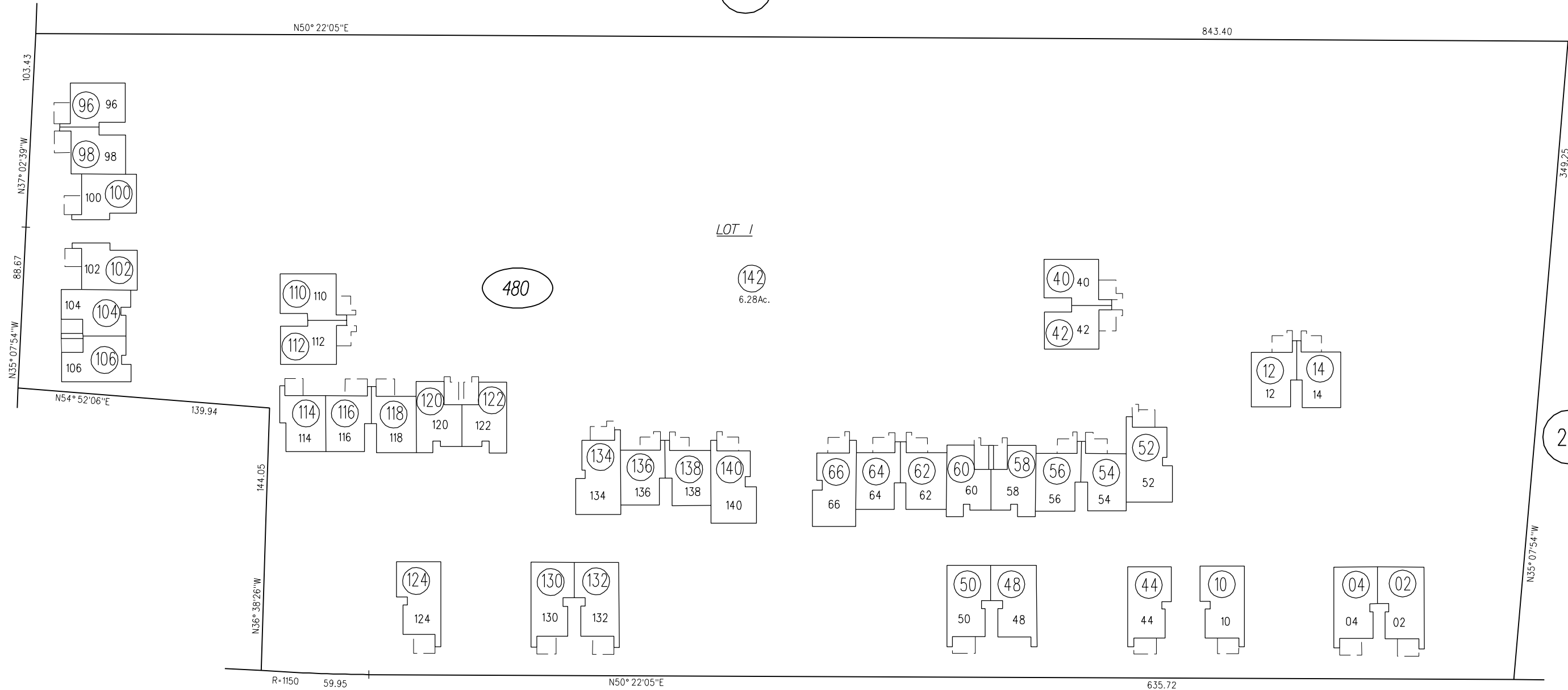
1979 ROLL TRACT 4691 SUMMERWOOD WEST (CONDO) MB 212-14  
C.C. & R.'S SER. #7899112 7-20-78  
4<sup>th</sup> AMEND. C.C. & R.'S 12193/776 2-21-85



29

PB  
145

OAK GROVE RD



28

SECOND LEVEL

TREAT

BLVD.

PB  
134

NOTE: THIS MAP WAS PREPARED FOR ASSESSMENT PURPOSES ONLY. NO LIABILITY IS ASSUMED FOR THE ACCURACY OF THE INFORMATION DELINEATED HEREON. ASSESSOR'S PARCELS MAY NOT COMPLY WITH LOCAL LOT SPLIT OR BUILDING SITE ORDINANCES.

12-29-78 FM 129-28  
ASSESSOR'S MAP  
BOOK 129 PAGE 48S-2  
CONTRA COSTA COUNTY, CALIF.