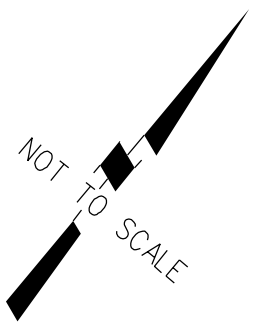
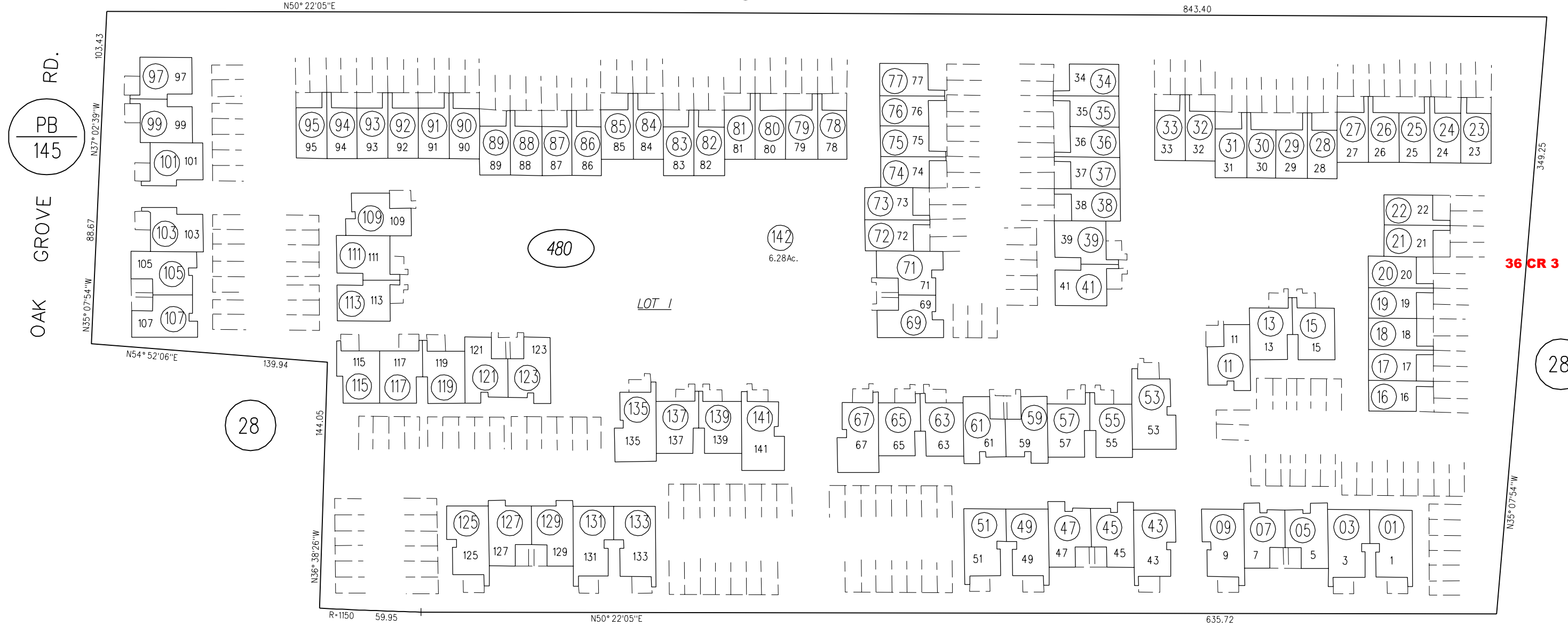


1979 ROLL TRACT 4691 SUMMERWOOD WEST (CONDO) MB 212-14
 C.C.&R.'S SER.#789112 7-20-78
 4th AMEND. C.C.&R.'S 12193/776 2-21-85



29



OAK GROVE RD.
 PB
 145

28

36 CR 3

28

FIRST LEVEL

TREAT

BLVD.

PB
 134

480

NOTE: THIS MAP WAS PREPARED FOR ASSESSMENT PURPOSES ONLY. NO LIABILITY IS ASSUMED FOR THE ACCURACY OF THE INFORMATION DELINEATED HEREON. ASSESSOR'S PARCELS MAY NOT COMPLY WITH LOCAL LOT SPLIT OR BUILDING SITE ORDINANCES.

12-29-78 FM 129-28
 ASSESSOR'S MAP
 BOOK 129 PAGE 48S-1
 CONTRA COSTA COUNTY, CALIF.