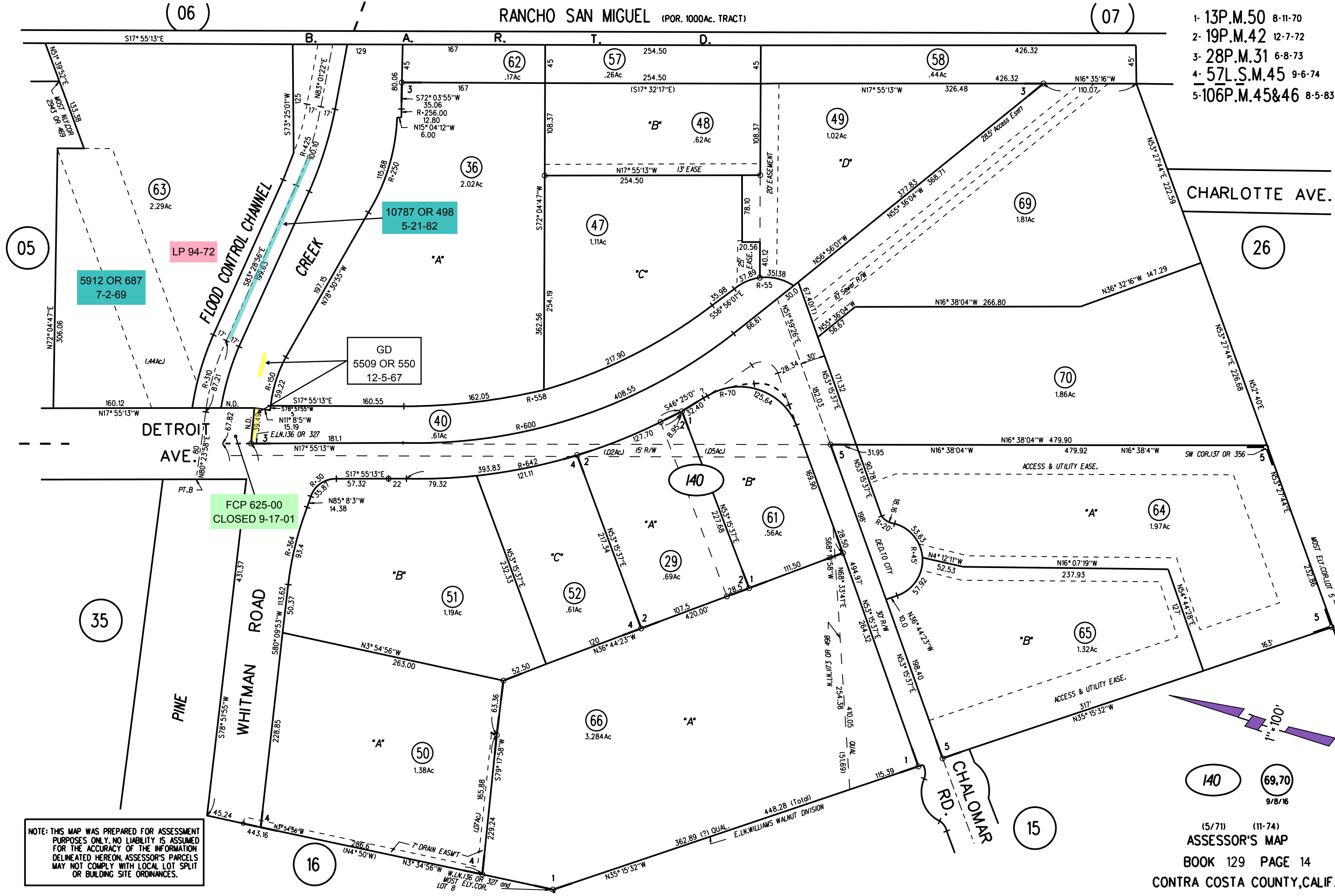


RANCHO SAN MIGUEL (POR. 1000Ac. TRACT)

- 1- 13P.M.50 8-11-70
- 2- 19P.M.42 12-7-72
- 3- 28P.M.31 6-8-73
- 4- 57L.S.M.45 9-6-74
- 5-106P.M.45&46 8-5-83



5912 OR 687  
7-2-69

LP 94-72

10787 OR 498  
5-21-82

GD  
5509 OR 550  
12-5-67

FCP 625-00  
CLOSED 9-17-01

NOTE: THIS MAP WAS PREPARED FOR ASSESSMENT PURPOSES ONLY. NO LIABILITY IS ASSUMED FOR THE ACCURACY OF THE INFORMATION DELINEATED HEREON. ASSESSOR'S PARCELS MAY NOT COMPLY WITH LOCAL LOT SPLIT OR BUILDING SITE ORDINANCES.

140 69.70  
9/8/16  
(5/71) (11-74)  
ASSESSOR'S MAP  
BOOK 129 PAGE 14  
CONTRA COSTA COUNTY, CALIF.