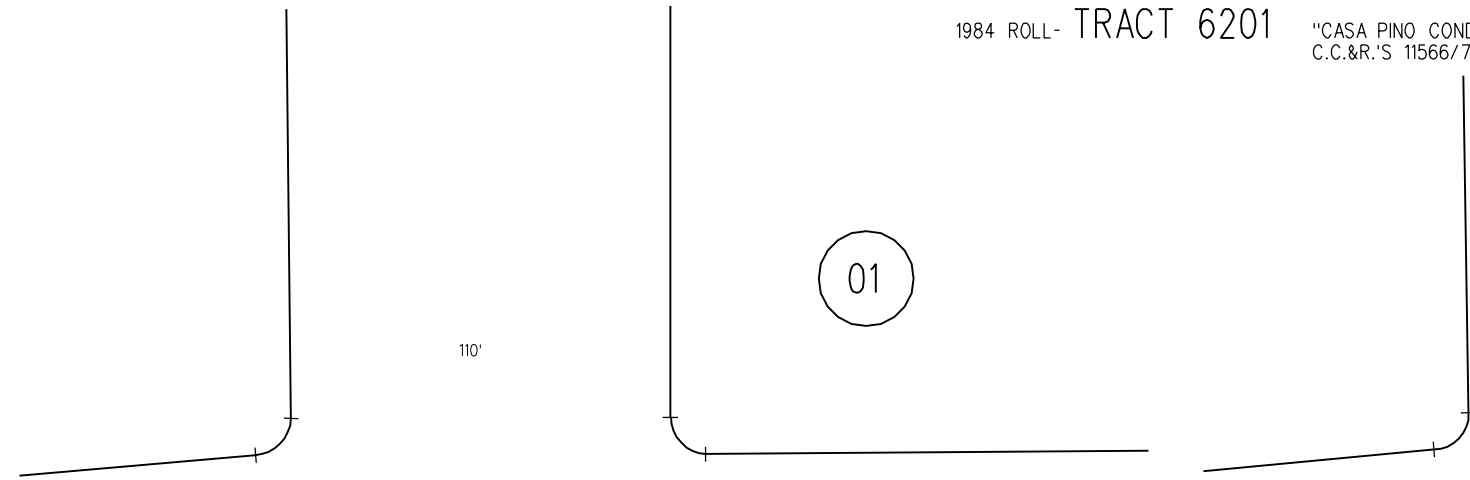
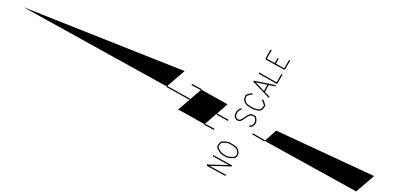


1984 ROLL- TRACT 6201 "CASA PINO CONDO." M.B. 268-9
C.C.&R.'S 11566/787 12-12-84

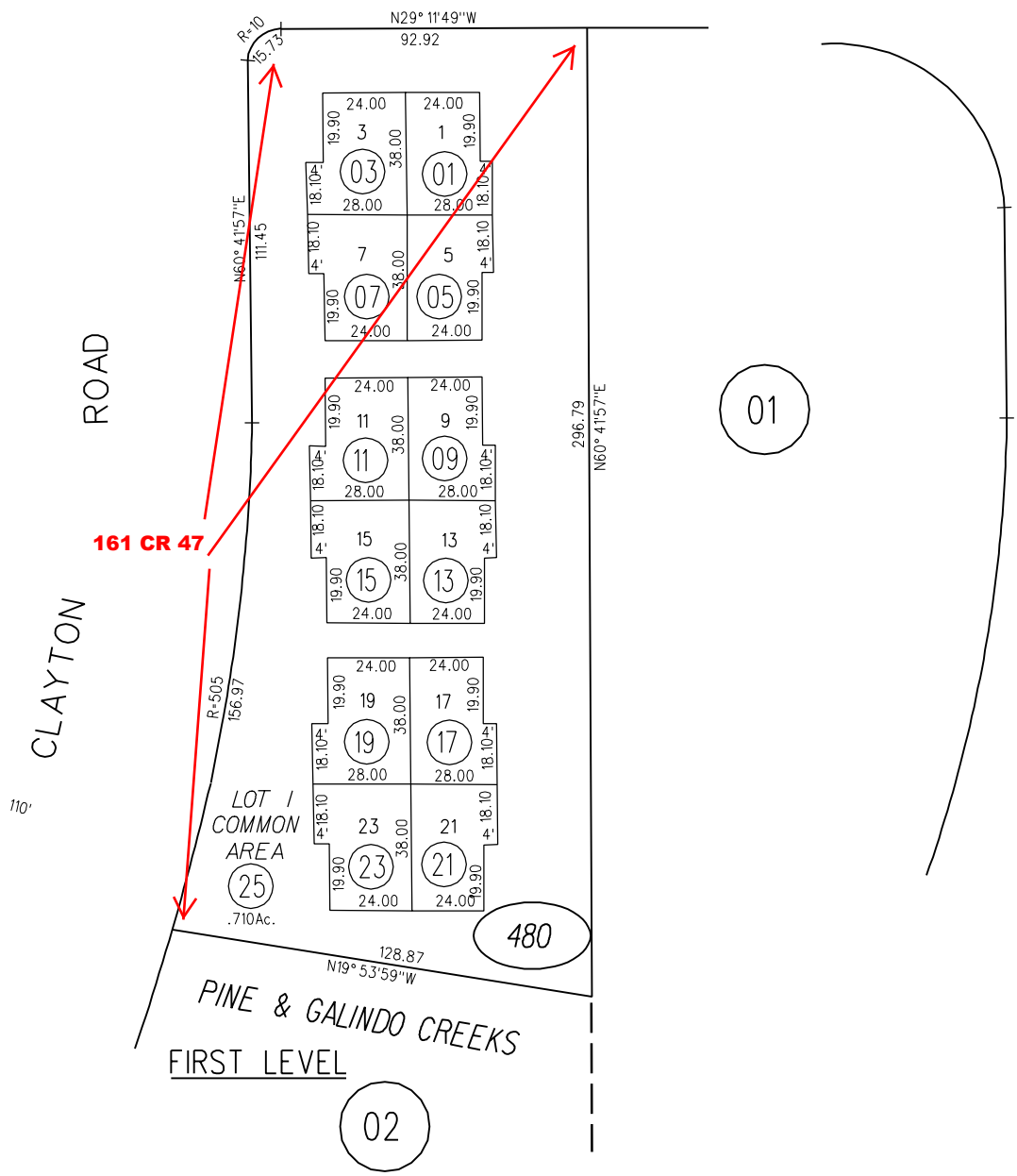


PINE STREET



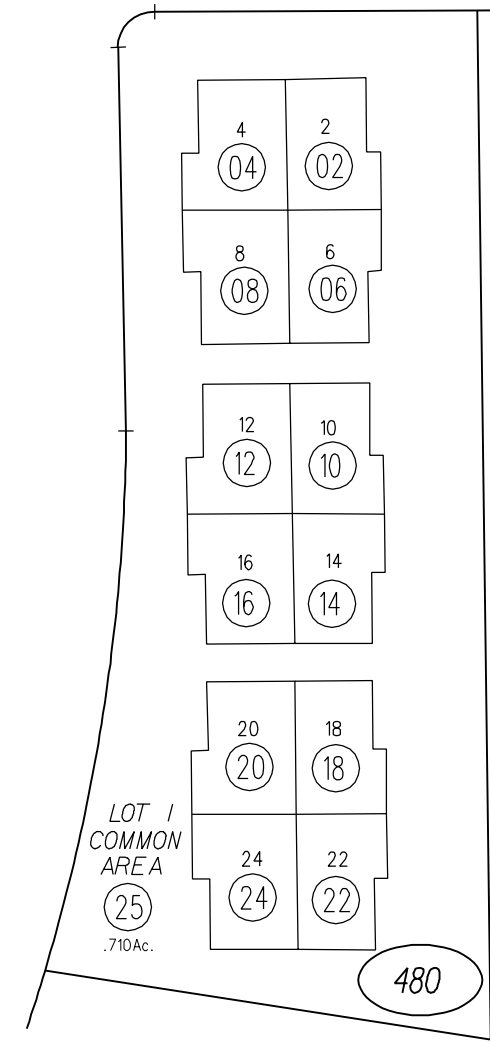
PINE STREET

P.B.
126



PINE & GALINDO CREEKS
FIRST LEVEL

CLAYTON ROAD



SECOND LEVEL

NOTE: THIS MAP WAS PREPARED FOR ASSESSMENT PURPOSES ONLY. NO LIABILITY IS ASSUMED FOR THE ACCURACY OF THE INFORMATION DELINEATED HEREON. ASSESSOR'S PARCELS MAY NOT COMPLY WITH LOCAL LOT SPLIT OR BUILDING SITE ORDINANCES.