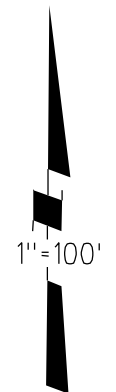


RANCHO LAS JUNTAS  
POR. SHERMAN ACRES UNIT NO. 2 M.B. 42-33

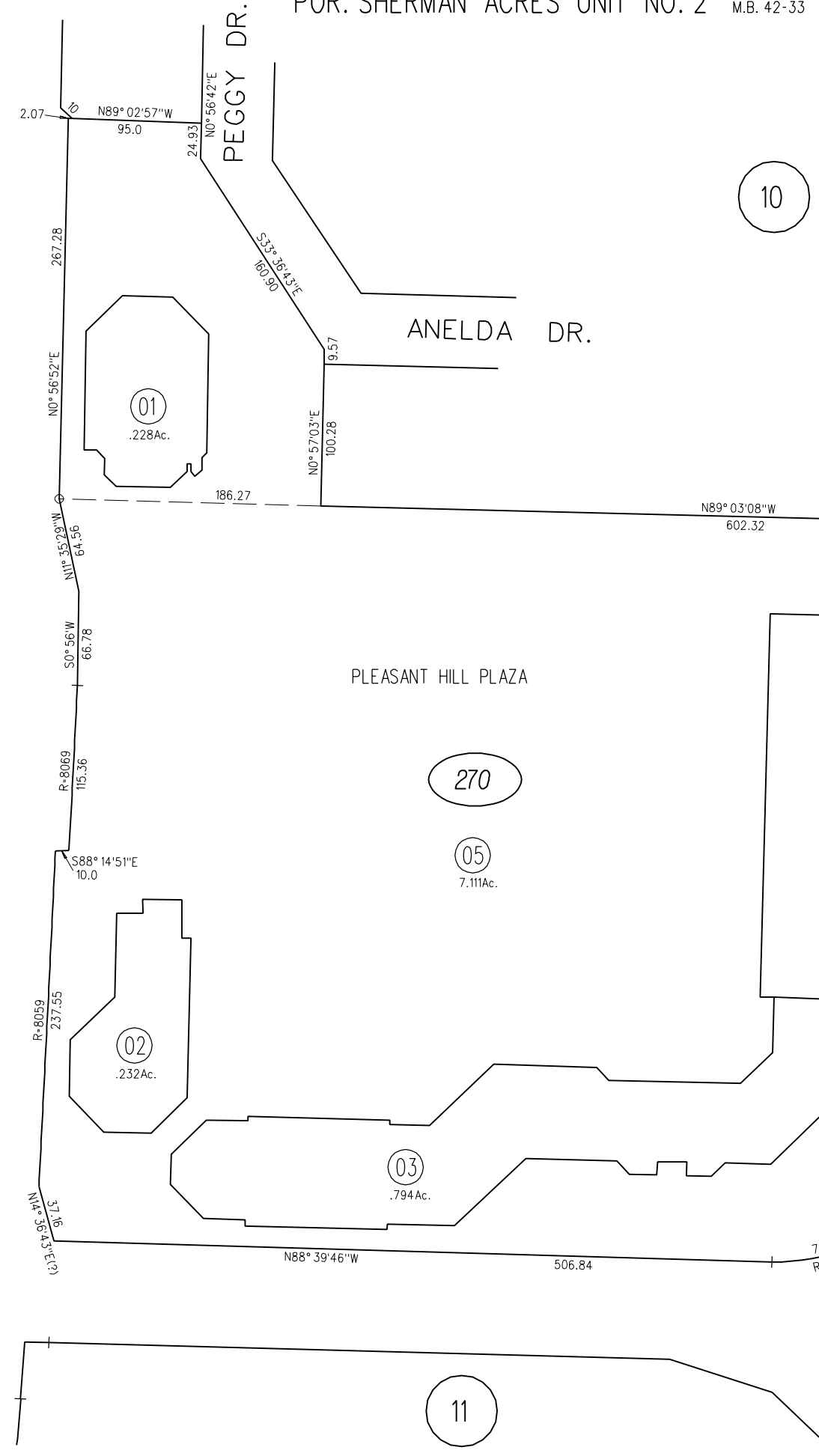


P.B.  
150

NOTE: THIS MAP WAS PREPARED FOR ASSESSMENT PURPOSES ONLY. NO LIABILITY IS ASSUMED FOR THE ACCURACY OF THE INFORMATION DELINEATED HEREON. ASSESSOR'S PARCELS MAY NOT COMPLY WITH LOCAL LOT SPLIT OR BUILDING SITE ORDINANCES.

CONTRA COSTA BLVD.

GREGORY LN.



**119 LSM 3**  
**125 LSM 18**

STATE  
FREIGHTWAY

250