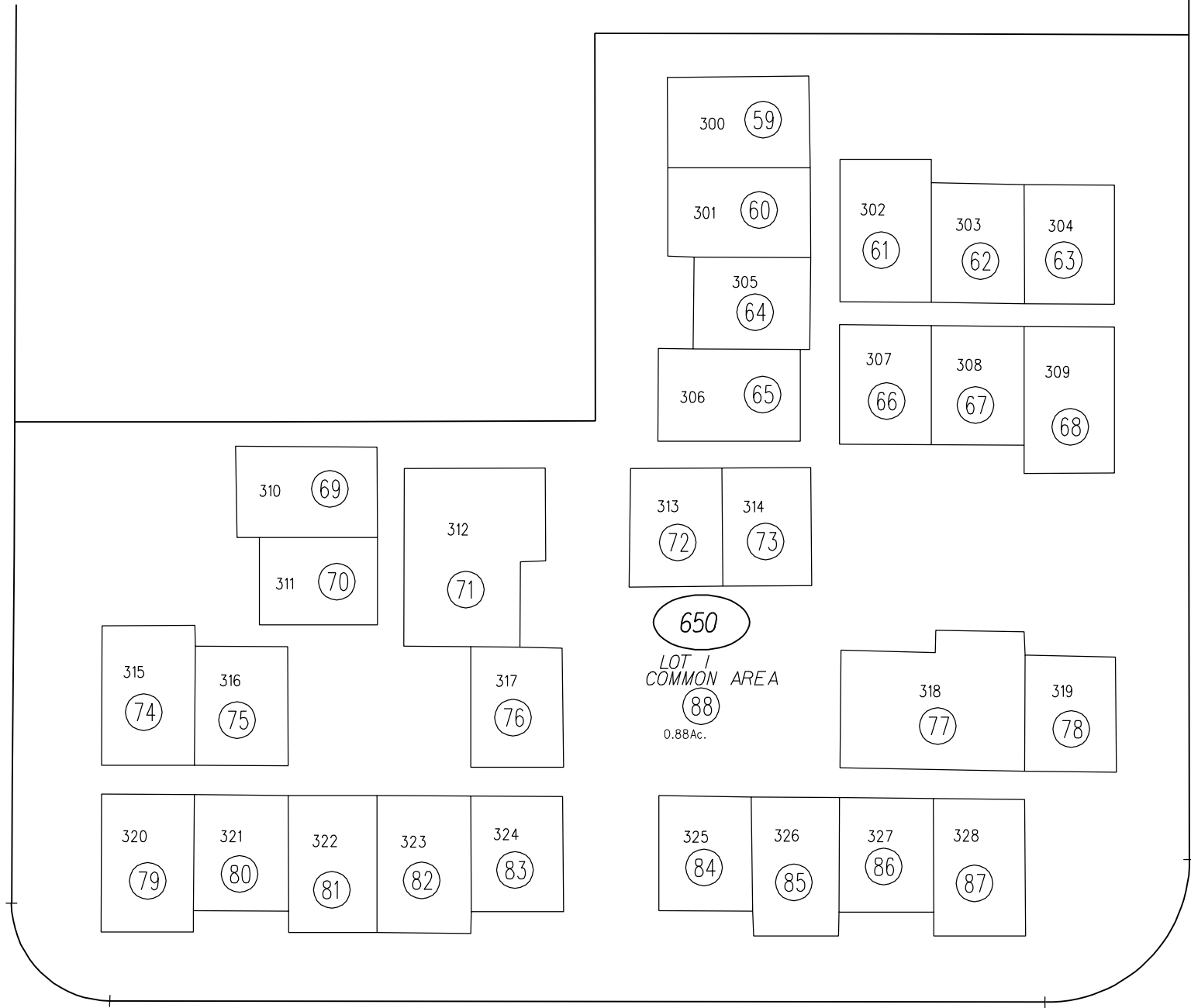
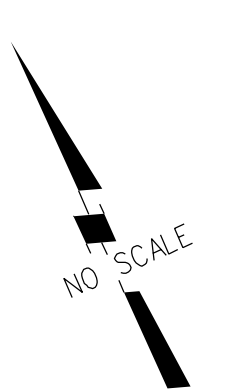


1985 ROLL - TRACT 6383 "BROADWAY PLAZA" M.B.276-35
 CC&R.'S 11715/804 3-28-84
 FIRST AMD. C.C.&R.'S 12010/638 10-9-84
 SECOND AMD. C.C.&R.'S 12467/470 8-20-85

CALIFORNIA STREET

HARRISON STREET



THIRD LEVEL

BROADWAY STREET

NOTE: THIS MAP WAS PREPARED FOR ASSESSMENT PURPOSES ONLY. NO LIABILITY IS ASSUMED FOR THE ACCURACY OF THE INFORMATION DELINEATED HEREON. ASSESSOR'S PARCELS MAY NOT COMPLY WITH LOCAL LOT SPLIT OR BUILDING SITE ORDINANCES.

