

1980 ROLL 79 PM 28 & 29 8-1-79 CONDO CC&R'S 9508/667 8-30-79

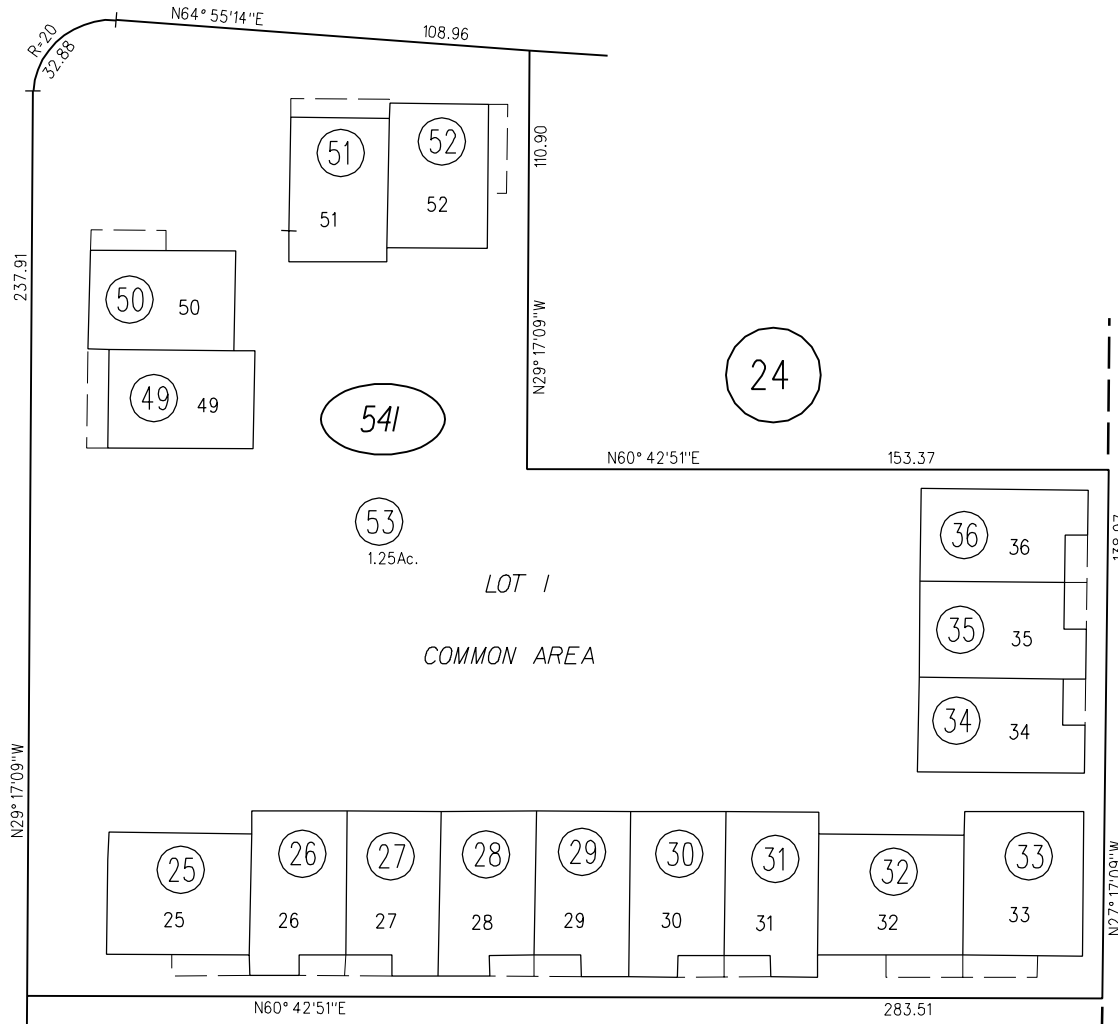
34

CLAYTON ROAD

ST.

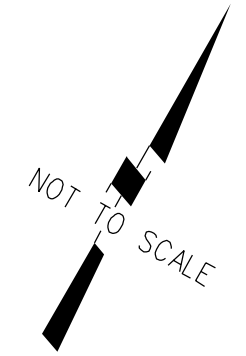
ELLIS

25



24

THIRD LEVEL



NOTE: THIS MAP WAS PREPARED FOR ASSESSMENT PURPOSES ONLY. NO LIABILITY IS ASSUMED FOR THE ACCURACY OF THE INFORMATION DELINEATED HEREON. ASSESSOR'S PARCELS MAY NOT COMPLY WITH LOCAL LOT SPLIT OR BUILDING SITE ORDINANCES.

54/

1-7-80 FM 126-24

ASSESSOR'S MAP

BOOK 126 PAGE 54S-3

CONTRA COSTA COUNTY, CALIF.