

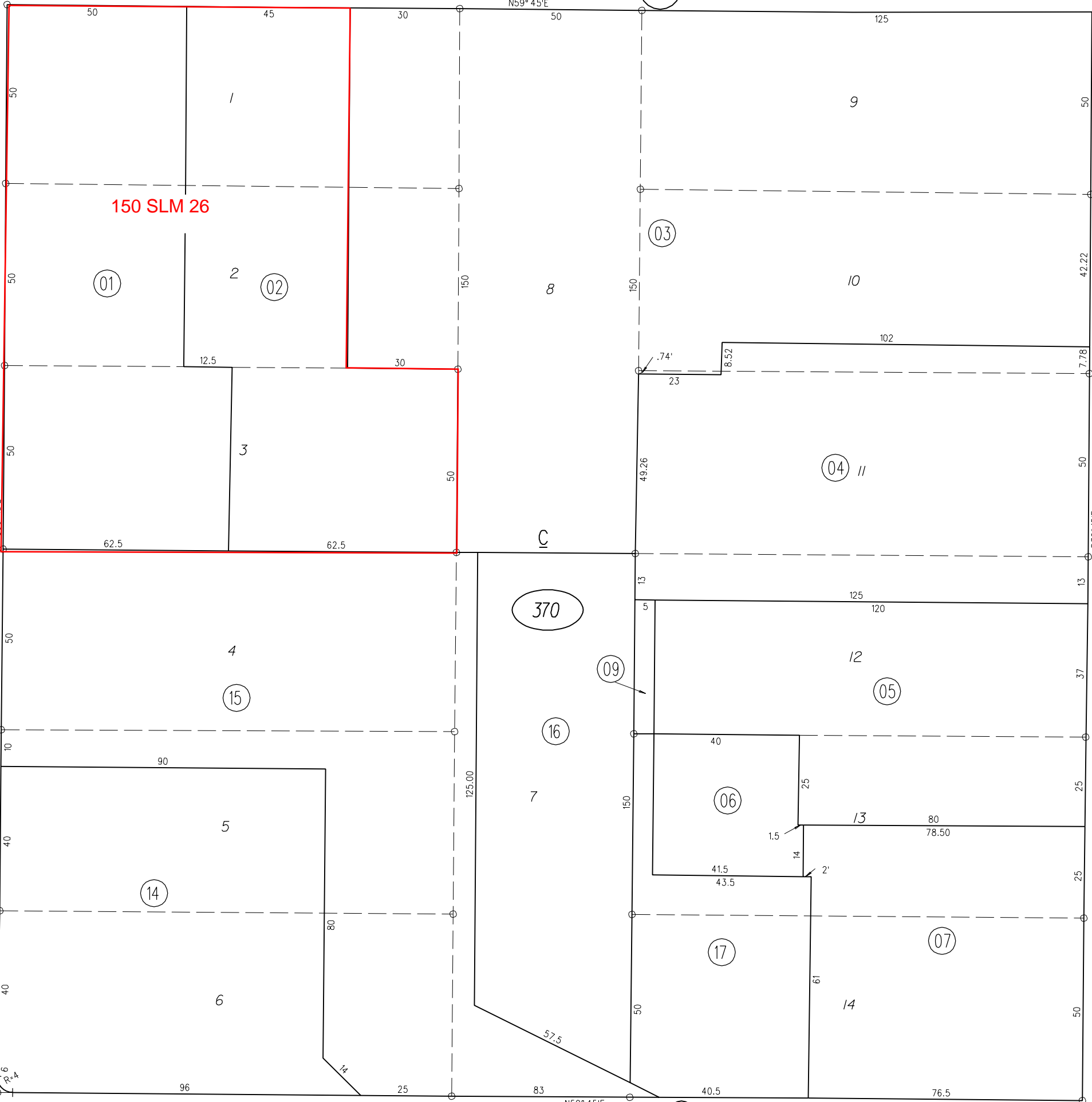
SALVIO

ST.

P.B.112

N59°45'E

125



ST.

ST.

TOWN OF TODOS SANTOS
M.B.-F-142

6

7

GALINDO

MT. DIABLO

370

NOTE: THIS MAP WAS PREPARED FOR ASSESSMENT PURPOSES ONLY. NO LIABILITY IS ASSUMED FOR THE ACCURACY OF THE INFORMATION DELINEATED HEREON. ASSESSOR'S PARCELS MAY NOT COMPLY WITH LOCAL LOT SPLIT OR BUILDING SITE ORDINANCES.

WILLOW PASS

RD.

N59°45'E

7

ASSESSOR'S MAP
BOOK 126 PAGE 37

FM.126-07 6-17-66 R.J.C. CONTRA COSTA COUNTY, CALIF.