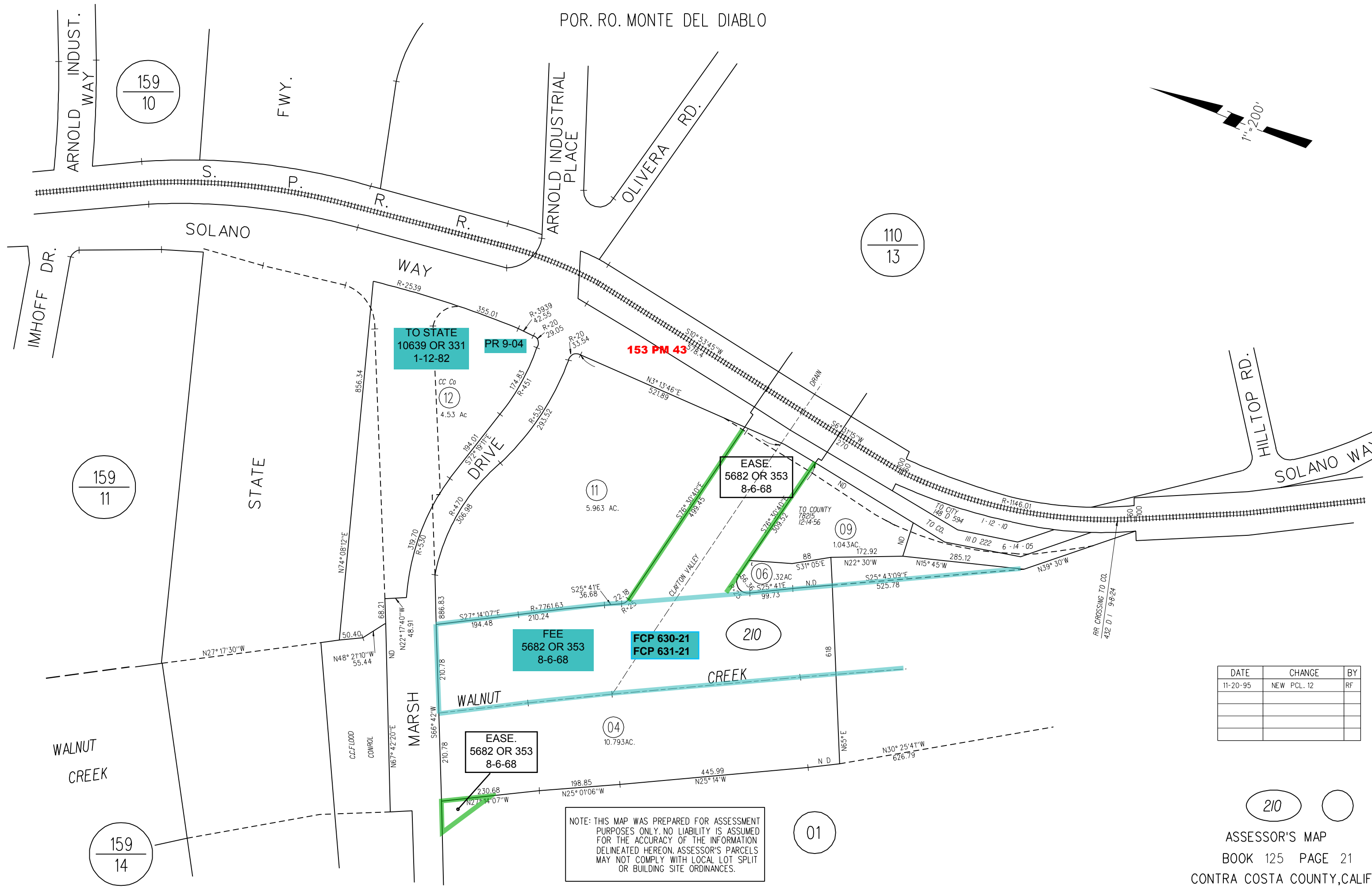
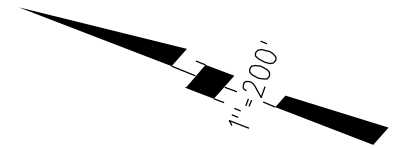


POR. RO. MONTE DEL DIABLO



TO STATE  
10639 OR 331  
1-12-82

PR 9-04

153 PM 43

EASE.  
5682 OR 353  
8-6-68

FEE  
5682 OR 353  
8-6-68

FCP 630-21  
FCP 631-21

EASE.  
5682 OR 353  
8-6-68

NOTE: THIS MAP WAS PREPARED FOR ASSESSMENT PURPOSES ONLY. NO LIABILITY IS ASSUMED FOR THE ACCURACY OF THE INFORMATION DELINEATED HEREON. ASSESSOR'S PARCELS MAY NOT COMPLY WITH LOCAL LOT SPLIT OR BUILDING SITE ORDINANCES.

DATE	CHANGE	BY
11-20-95	NEW PCL. 12	RF

210