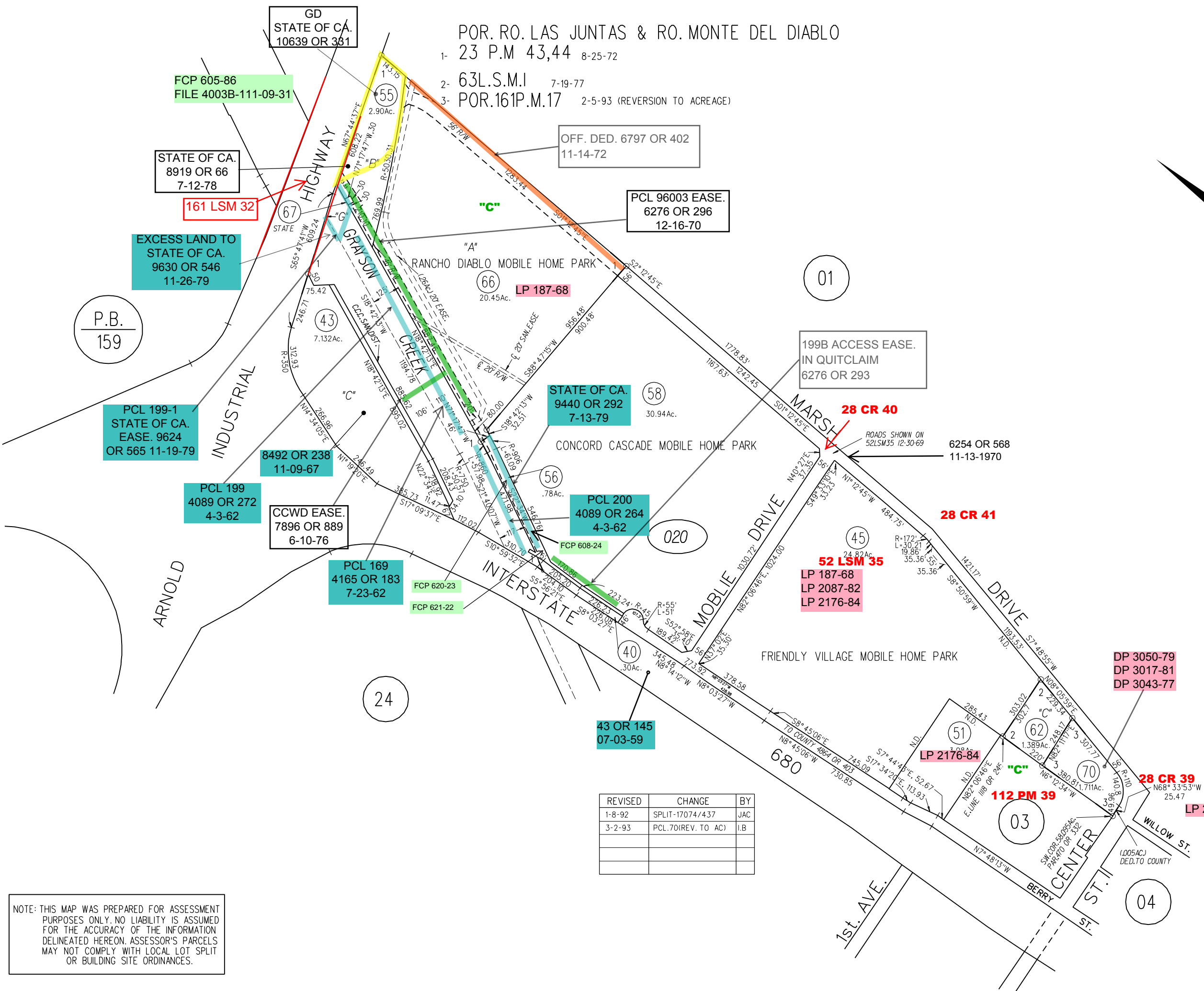
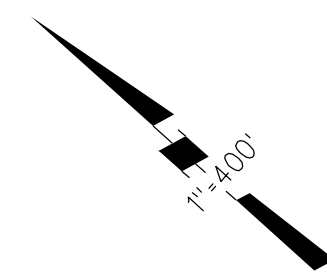


POR. RO. LAS JUNTAS & RO. MONTE DEL DIABLO
 1- 23 P.M. 43,44 8-25-72
 2- 63L.S.M.I 7-19-77
 3- POR.161P.M.17 2-5-93 (REVERSION TO ACREAGE)



P.B.
159

REVISED	CHANGE	BY
1-8-92	SPLIT-17074/437	JAC
3-2-93	PCL.70(REV. TO AC)	I.B

NOTE: THIS MAP WAS PREPARED FOR ASSESSMENT PURPOSES ONLY. NO LIABILITY IS ASSUMED FOR THE ACCURACY OF THE INFORMATION DELINEATED HEREON. ASSESSOR'S PARCELS MAY NOT COMPLY WITH LOCAL LOT SPLIT OR BUILDING SITE ORDINANCES.