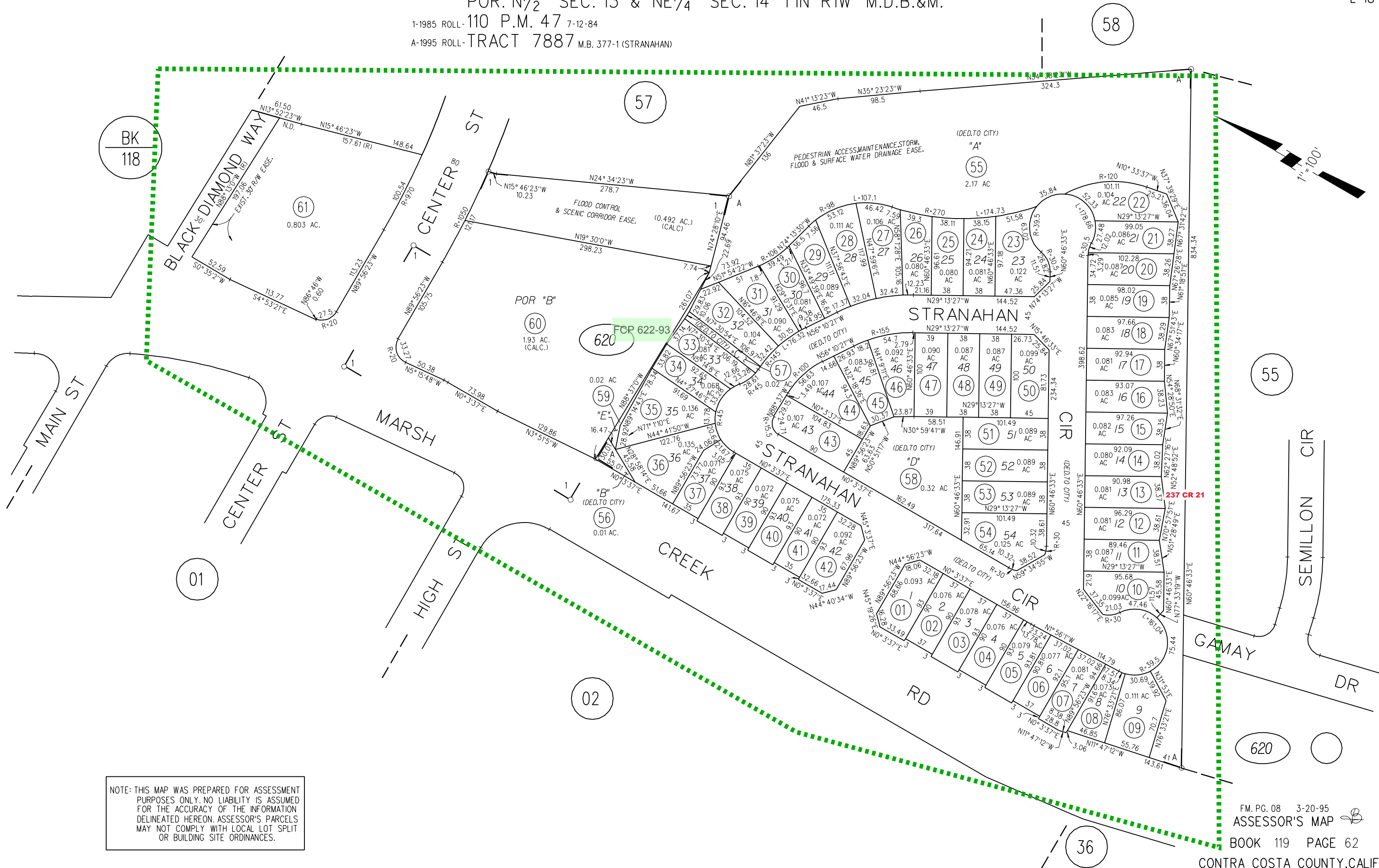


POR. N¹/₂ SEC. 13 & NE¹/₄ SEC. 14 T1N R1W M.D.B.&M.
1-1985 ROLL- 110 P.M. 47 7-12-84
A-1995 ROLL-TRACT 7887 M.B. 377-1 (STRANAHAN)



NOTE: THIS MAP WAS PREPARED FOR ASSESSMENT PURPOSES ONLY. NO LIABILITY IS ASSUMED FOR THE ACCURACY OF THE INFORMATION DELINEATED HEREON. ASSESSOR'S PARCELS MAY NOT COMPLY WITH LOCAL LOT SPLIT OR BUILDING SITE ORDINANCES.