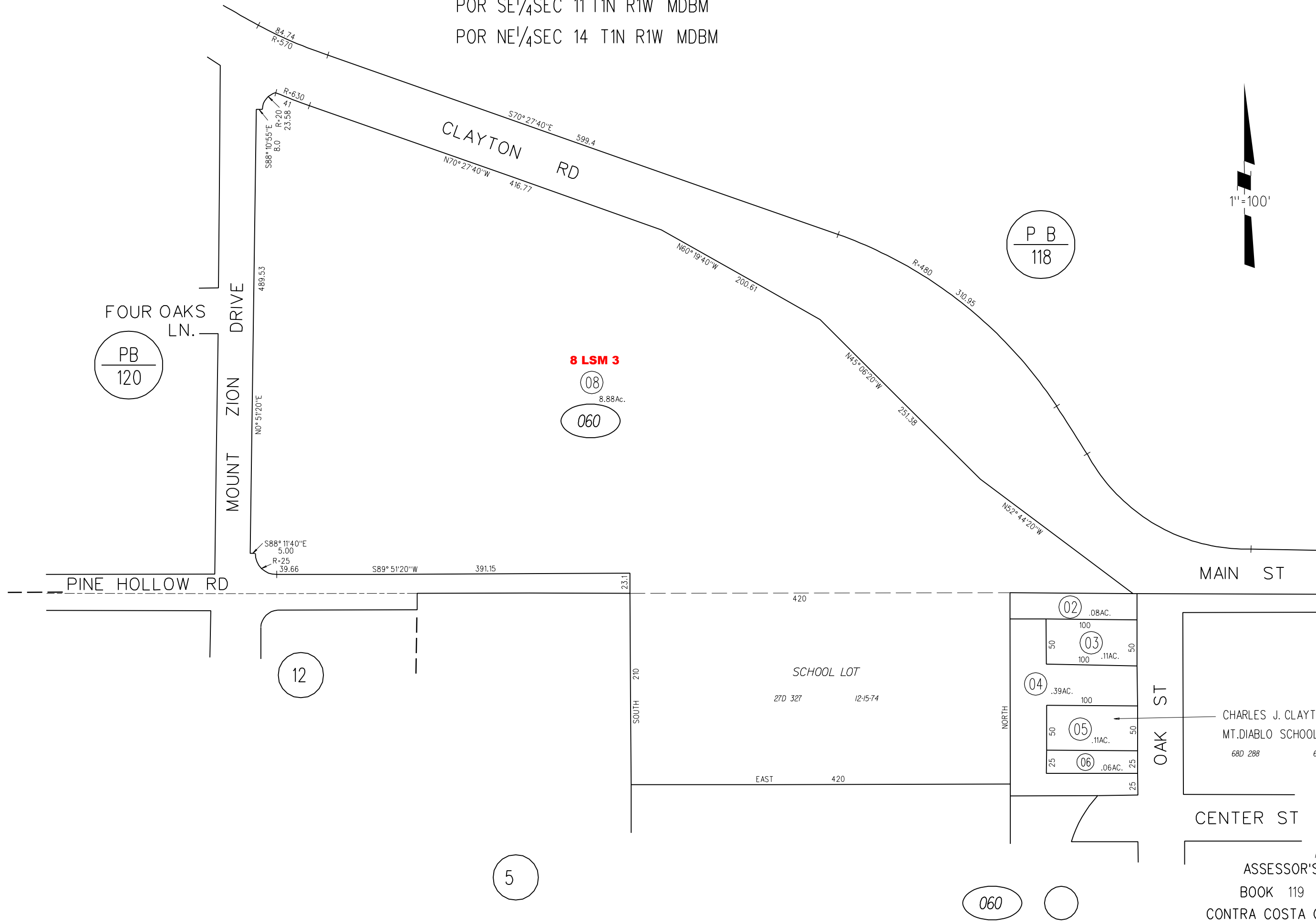


POR SE 1/4 SEC 11 T1N R1W MDBM  
POR NE 1/4 SEC 14 T1N R1W MDBM



8 LSM 3

P B  
118

PB  
120

12

5

08

060

02 .08AC.

100  
50 03 50  
100 .11AC.

04 .39AC.

100  
50 05 50  
25 06 .06AC. 25

CHARLES J. CLAYTON TO  
MT. DIABLO SCHOOL DIST.  
680 288 6-26-1890

CENTER ST