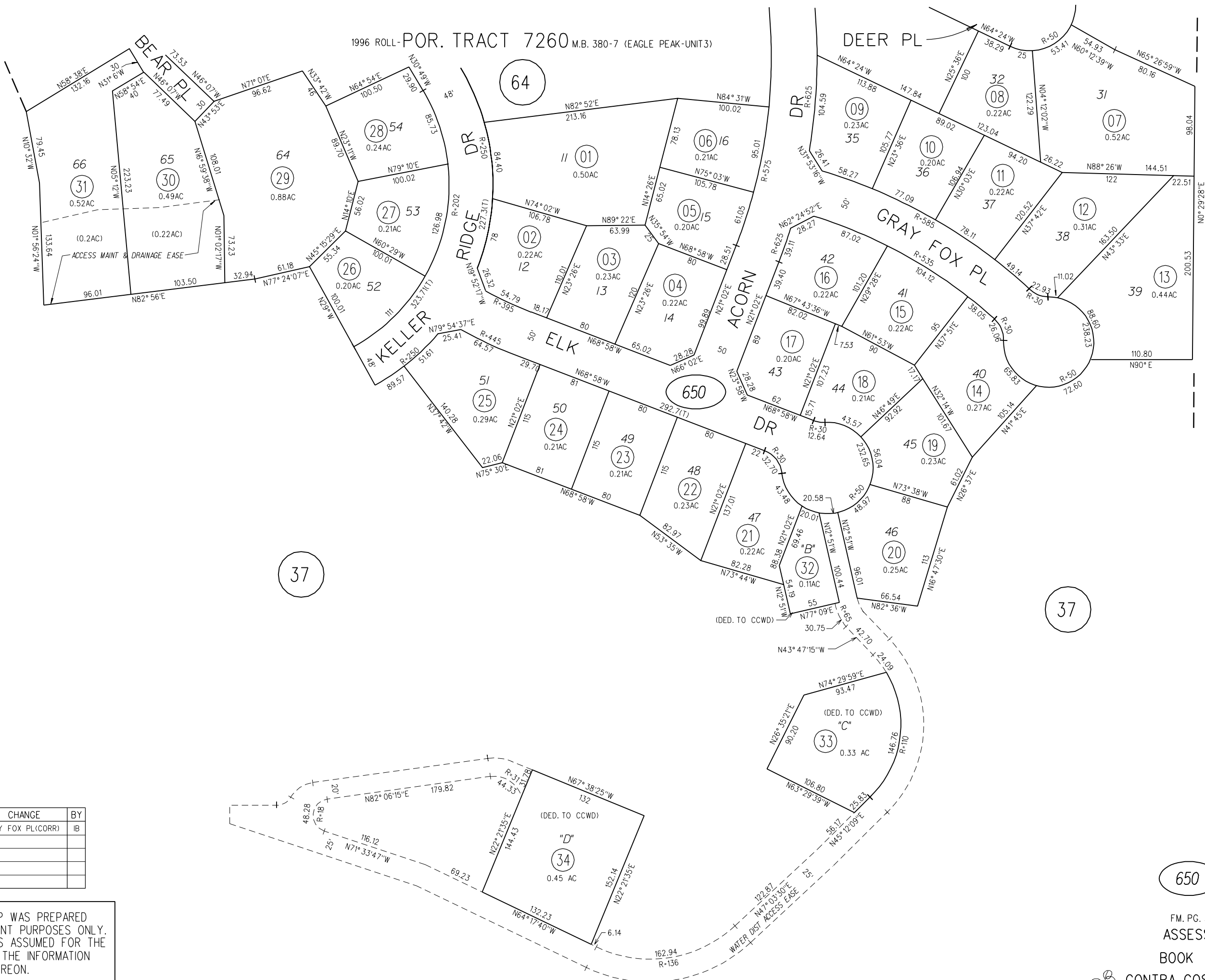


1" = 100'

BK
75

1996 ROLL-POR. TRACT 7260 M.B. 380-7 (EAGLE PEAK-UNIT 3)



REVISED	CHANGE	BY
02-14-96	GRAY FOX PL(CORR)	IB

NOTE: THIS MAP WAS PREPARED FOR ASSESSMENT PURPOSES ONLY. NO LIABILITY IS ASSUMED FOR THE ACCURACY OF THE INFORMATION DELINEATED HEREON.

650

FM. PG. 37 1-23-96 D.K.

ASSESSOR'S MAP

BOOK 118 PAGE 65

CONTRA COSTA COUNTY, CALIF.