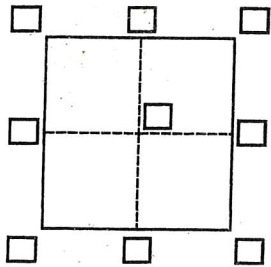


CORNER RECORD

Agency Index 228 0243
 Document Number -10723

City of Lafayette County of Contra Costa, California
 Brief Legal Description Parcel "A" 184 PM 8



CORNER TYPE

Government Corner Control
 Meander Property
 Rancho Other

Date of Survey 3-12-21

COORDINATES (Optional)

N. _____ E. _____

Elevation _____

Units Metric U.S. Survey Foot

Horizontal Datum _____

Zone _____ Epoch Date _____

Vertical Datum _____

Complies with Public Resources Code §§8801-8819

Complies with Public Resources Code §§8890-8902

PLS Act Ref.: 8765(d) 8771 8773 Other:

Corner/Monument: Left as found Established Rebuilt Pre-Construction
 Found and tagged Reestablished Referenced Post-Construction

Narrative of corner identified and monument as found, set, reset, replaced, or removed:

See sheet #2 for description(s):

SURVEYOR'S STATEMENT

This Corner Record was prepared by me or under my direction in conformance with

the Professional Land Surveyors' Act on 3-16-21

Signed Matthew Chapman P.L.S. or R.C.E. No. 7054



Matthew Chapman

COUNTY SURVEYOR'S STATEMENT

This Corner Record was received March 18th 2021

and examined and filed April 7th 2021

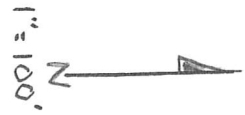
Signed James A. Stein P.L.S. or R.C.E. No. 6571

Title County Surveyor

County Surveyor's Comment

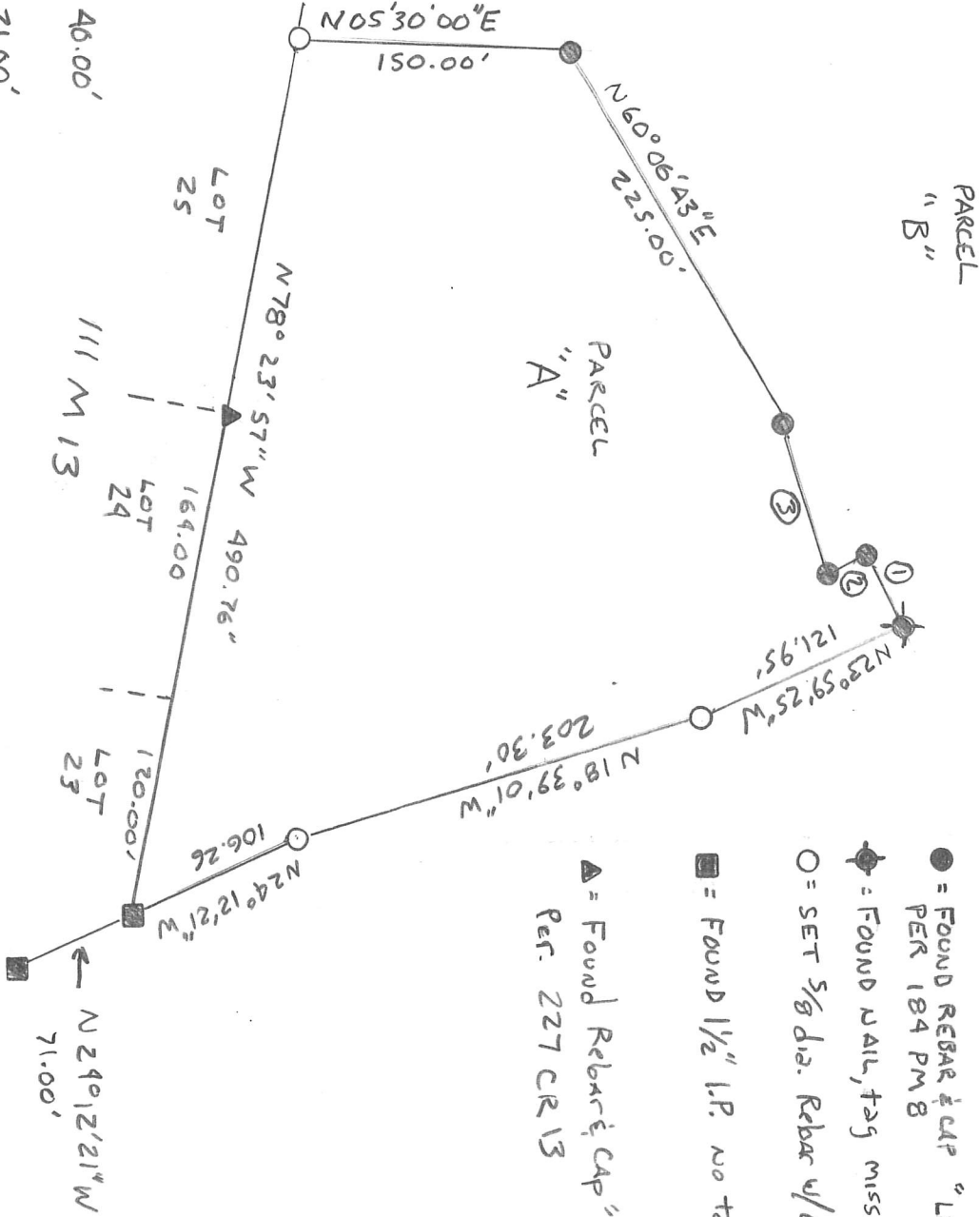


APN # 237-260-040



- ① N 66° 00' 35" E 40.00'
 ② N 23° 59' 25" W 21.60'
 ③ N 86° 22' 37" E 85.28'

LINE DATA



LEGEND

- = FOUND REBAR & CAP "LS 2729" PER 184 PM 8
- ⊕ = FOUND NAIL, TAG MISSING
- = SET 5/8 dia. Rebar w/cap "PLS 705A"
- = FOUND 1/2" I.P. NO TAG
- ▲ = FOUND REBAR & CAP "PLS 705A" PER. 227 CR 13