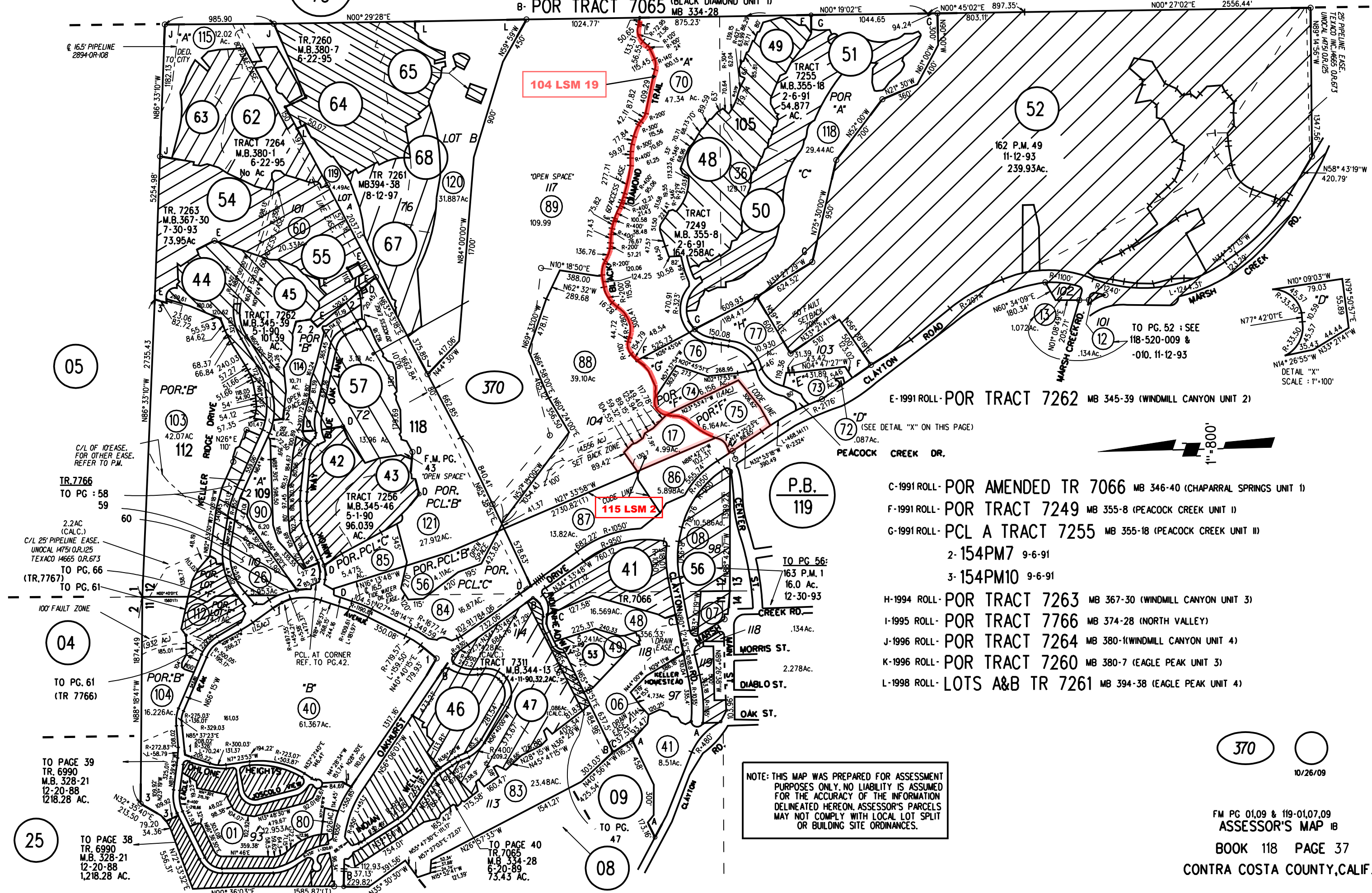


P.B.  
75

1- LOT B 107PM31 9/29/83  
 A- POR SEC 11 T1N R1W MDBM  
 B- POR TRACT 7065 (BLACK DIAMOND UNIT 1) MB 334-28

1989 ROLL - POR TRACT 6990 (OAKHURST COUNTRY CLUB) MB 328-21  
 D-1991 ROLL POR TR7256 EAGLE PEAK UNIT 1 MB 345-46



E-1991 ROLL - POR TRACT 7262 MB 345-39 (WINDMILL CANYON UNIT 2)

- C-1991 ROLL - POR AMENDED TR 7066 MB 346-40 (CHAPARRAL SPRINGS UNIT 1)
- F-1991 ROLL - POR TRACT 7249 MB 355-8 (PEACOCK CREEK UNIT I)
- G-1991 ROLL - PCL A TRACT 7255 MB 355-18 (PEACOCK CREEK UNIT II)
  - 2- 154PM7 9-6-91
  - 3- 154PM10 9-6-91
- H-1994 ROLL - POR TRACT 7263 MB 367-30 (WINDMILL CANYON UNIT 3)
- I-1995 ROLL - POR TRACT 7766 MB 374-28 (NORTH VALLEY)
- J-1996 ROLL - POR TRACT 7264 MB 380-1 (WINDMILL CANYON UNIT 4)
- K-1996 ROLL - POR TRACT 7260 MB 380-7 (EAGLE PEAK UNIT 3)
- L-1998 ROLL - LOTS A&B TR 7261 MB 394-38 (EAGLE PEAK UNIT 4)

NOTE: THIS MAP WAS PREPARED FOR ASSESSMENT PURPOSES ONLY. NO LIABILITY IS ASSUMED FOR THE ACCURACY OF THE INFORMATION DELINEATED HEREON. ASSESSOR'S PARCELS MAY NOT COMPLY WITH LOCAL LOT SPLIT OR BUILDING SITE ORDINANCES.

370

10/26/09

FM PG 01,09 & 119-01,07,09  
 ASSESSOR'S MAP 18  
 BOOK 118 PAGE 37  
 CONTRA COSTA COUNTY, CALIF.