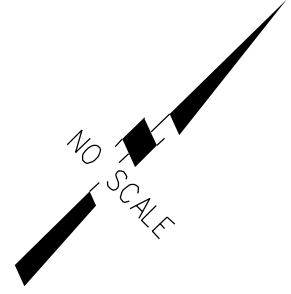


P.B.  
133

26



110'  
CLAYTON  
ROAD

N44°40'52"W  
76.42

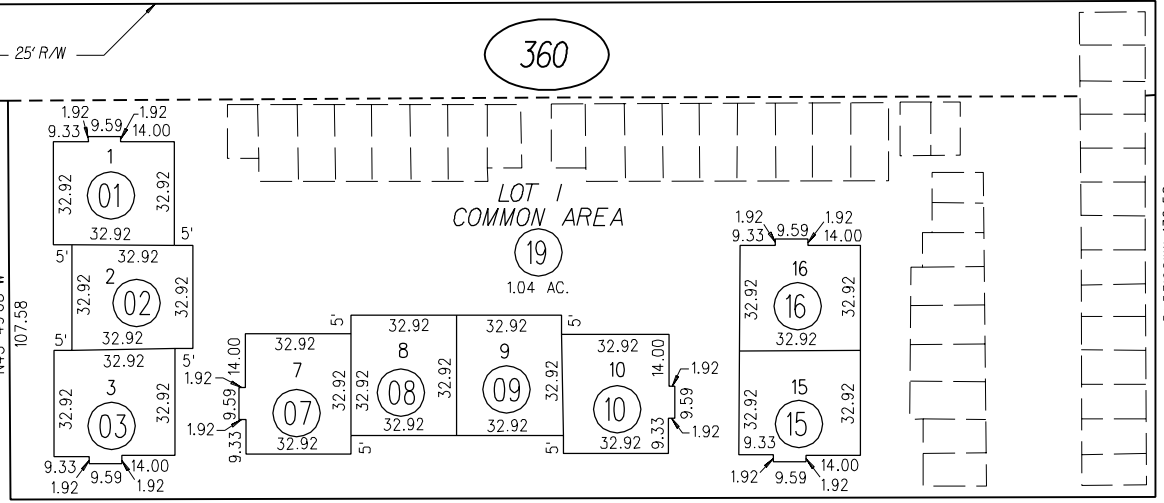
N44°10'52"E-512.35

N44°10'52"W-200.50

N45°49'08"W  
107.58

N45°53'08"W-132.58

26

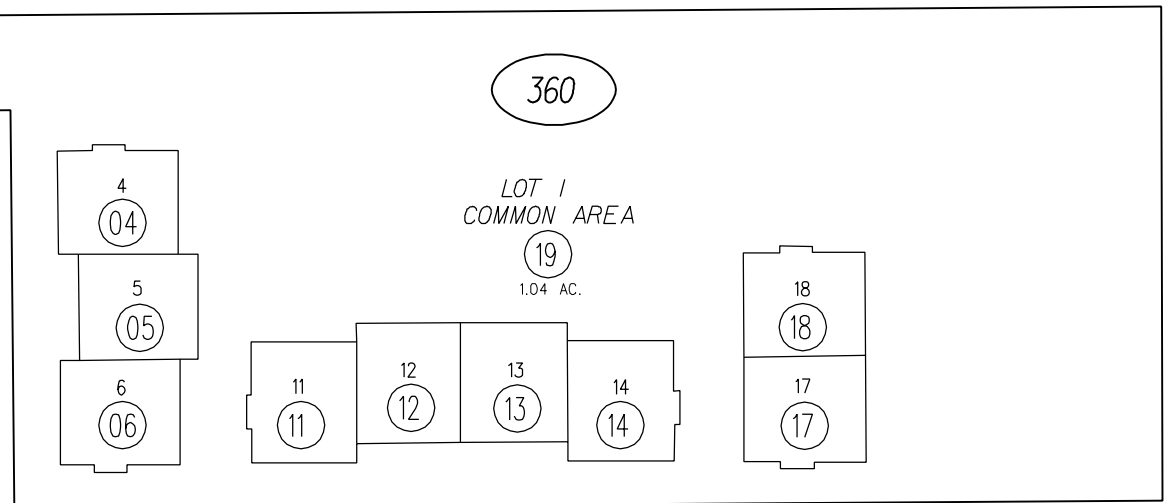


FIRST LEVEL

26

N44°10'52"E 303.46

CLAYTON  
ROAD



SECOND LEVEL

360