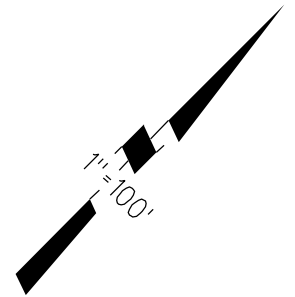


A- TRACT 2601 (FOREST PARK ESTATES) M.B. 69-5

(RESUBDIVISION OF TRACT 2446 M.B. 67-44)

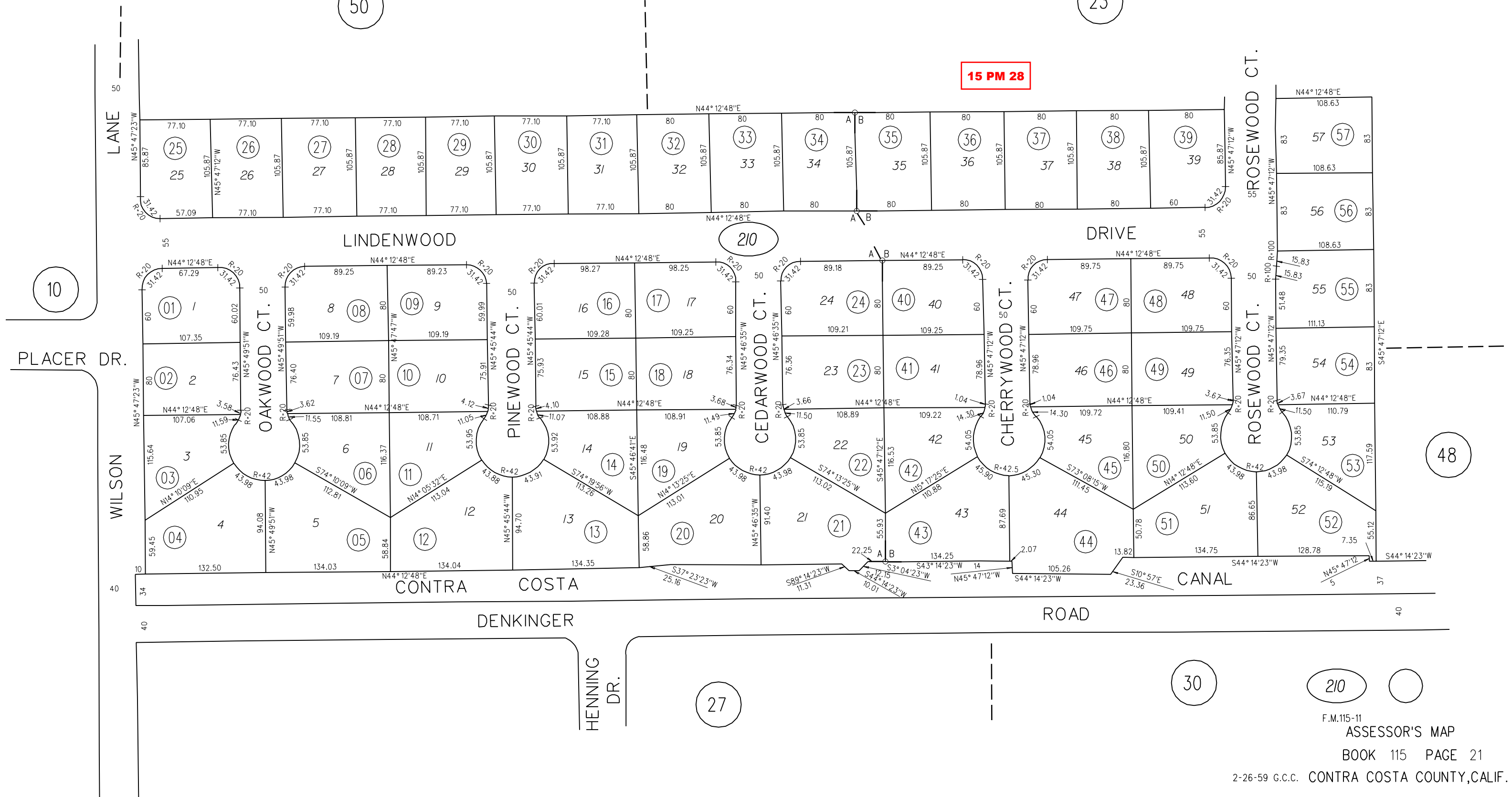
B-1959 ROLL- TRACT 2641 (FOREST PARK ESTATES NO.2) M.B. 72-9



50

23

15 PM 28



10

20

48

30

210

27

F.M.115-11

ASSESSOR'S MAP

BOOK 115 PAGE 21

2-26-59 G.C.C. CONTRA COSTA COUNTY, CALIF.