

1- 36L.S.M.13 7-22-65

3- 44P.M.47&48 5-11-76

2- 22P.M.25 5-31-72

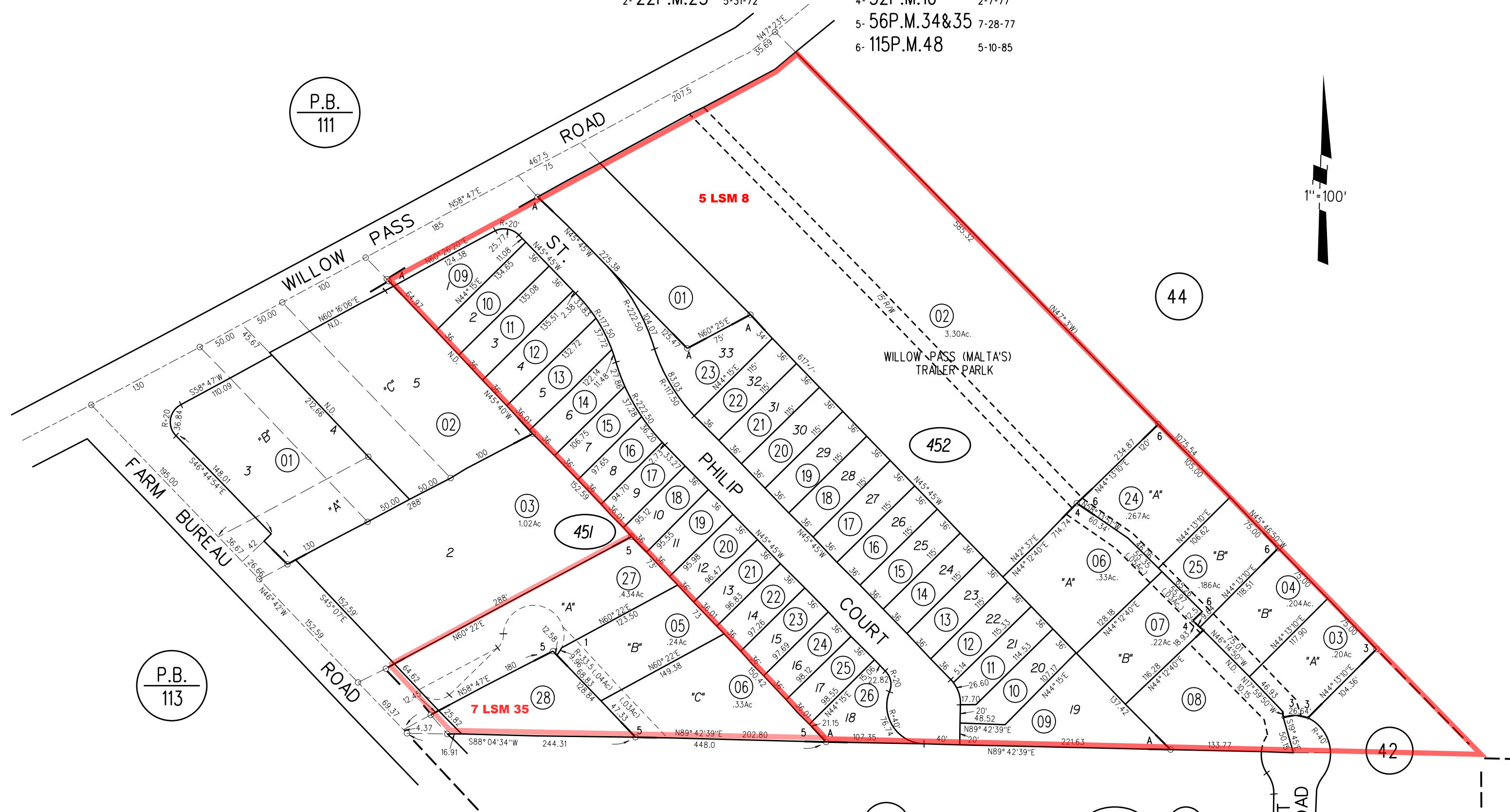
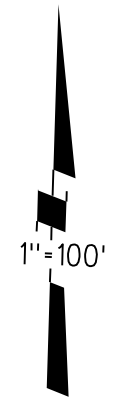
4- 52P.M.10 2-7-77

5- 56P.M.34&35 7-28-77

6- 115P.M.48 5-10-85

P.B.
111

P.B.
113



NOTE: THIS MAP WAS PREPARED FOR ASSESSMENT PURPOSES ONLY. NO LIABILITY IS ASSUMED FOR THE ACCURACY OF THE INFORMATION DELINEATED HEREON. ASSESSOR'S PARCELS MAY NOT COMPLY WITH LOCAL LOT SPLIT OR BUILDING SITE ORDINANCES.

11-13-87
ASSESSOR'S MAP
BOOK 114 PAGE 45
CONTRA COSTA COUNTY, CALIF.