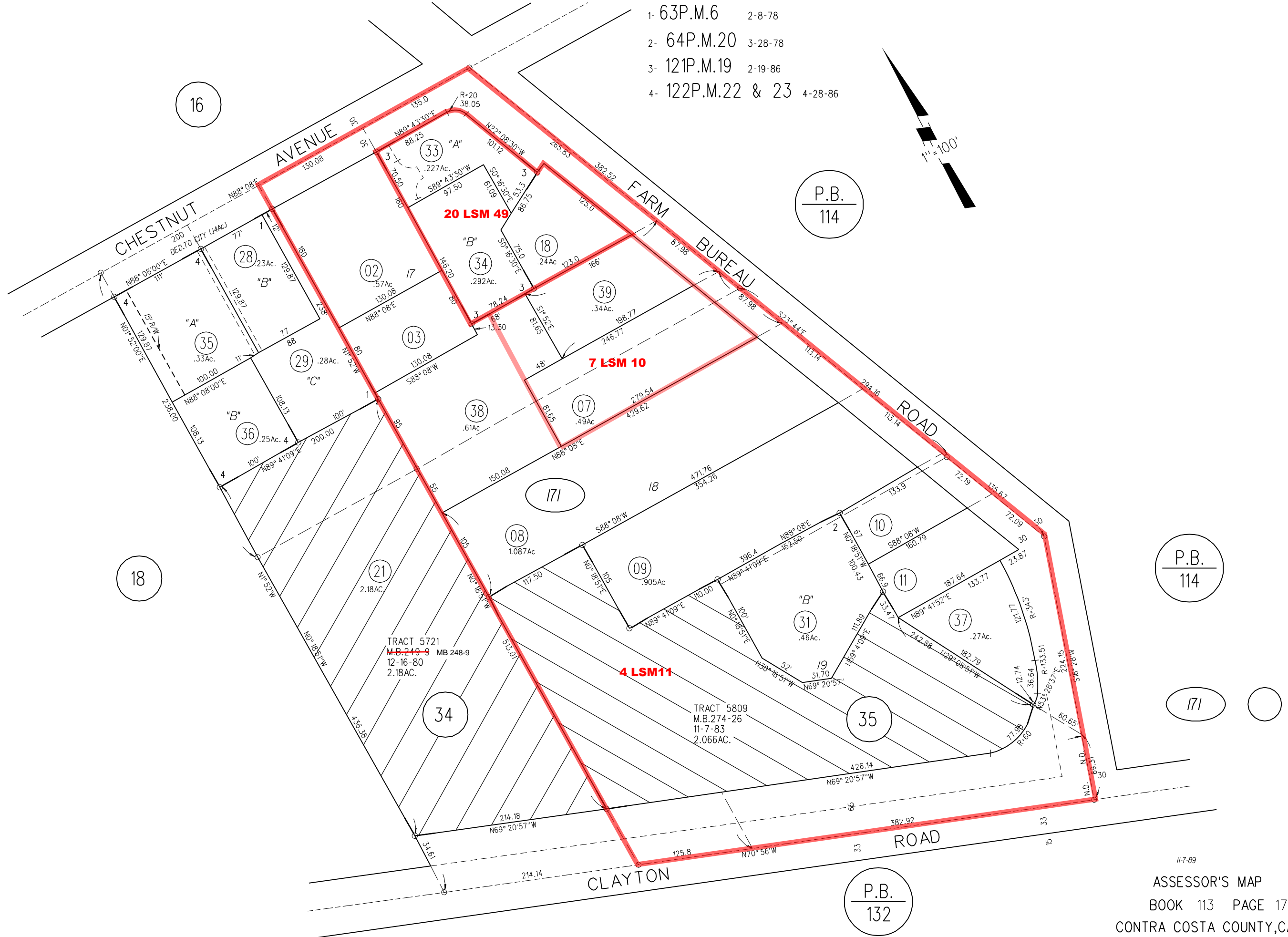
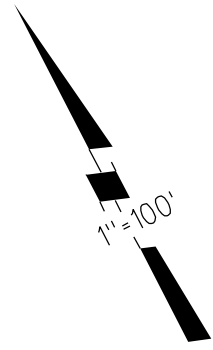


R.N. BURGESS-WALNUT LANDS MAP NO.2 M.B.4-92

- 1- 63P.M.6 2-8-78
- 2- 64P.M.20 3-28-78
- 3- 121P.M.19 2-19-86
- 4- 122P.M.22 & 23 4-28-86



16

P.B.
114

18

P.B.
114

TRACT 5721
M.B. 248-9
12-16-80
2.18AC.

4 LSM11

TRACT 5809
M.B. 274-26
11-7-83
2.066AC.

35

171

P.B.
132