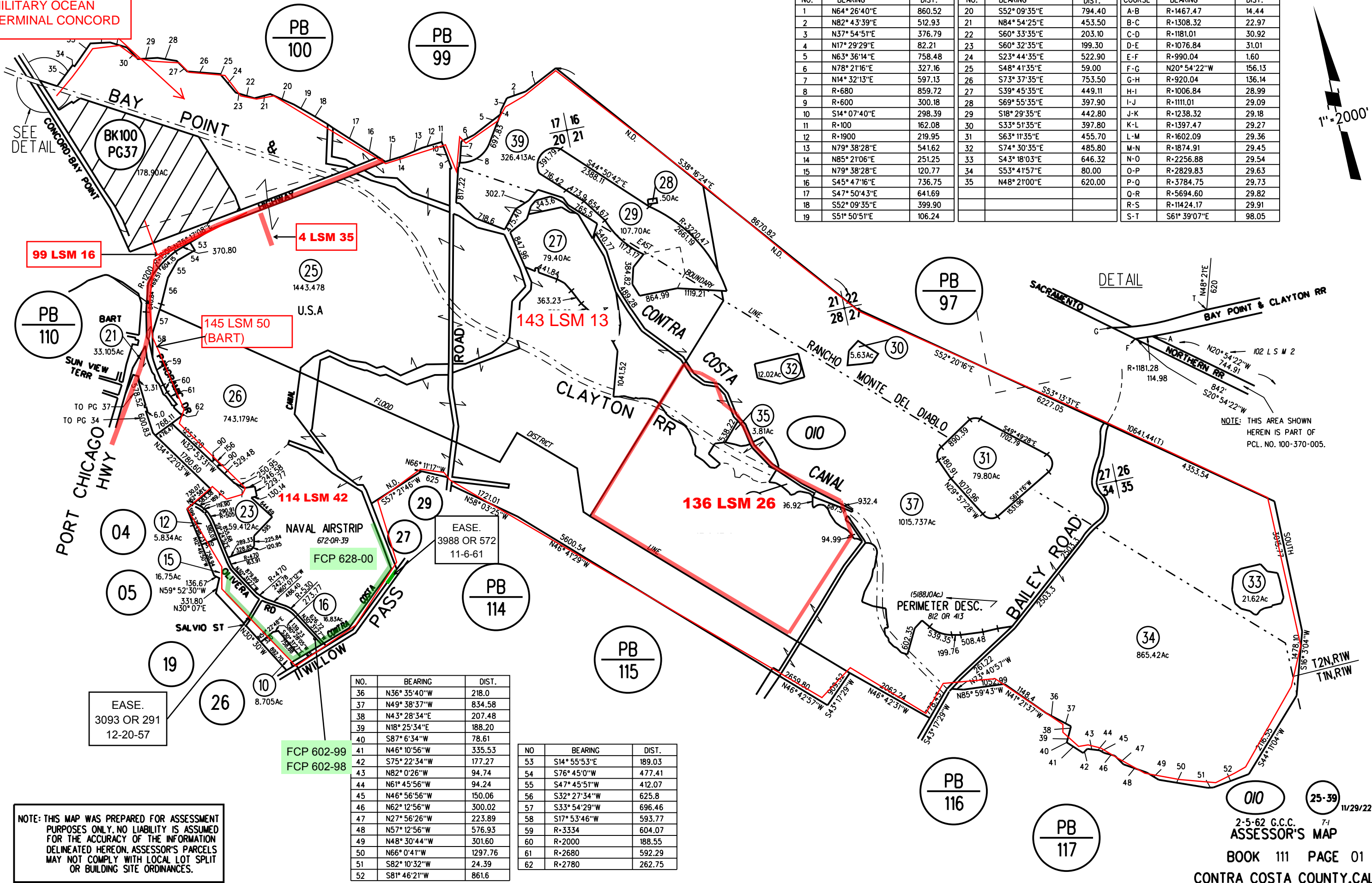
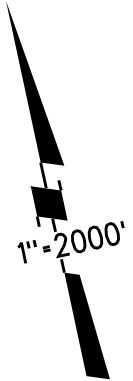


# INLAND STORAGE AREA & U.S. NAVAL AIRPORT

152 LSM 28  
MILITARY OCEAN  
TERMINAL CONCORD

NO.	BEARING	DIST.	NO.	BEARING	DIST.	COURSE	BEARING	DIST.
1	N64°26'40"E	860.52	20	S52°09'35"E	794.40	A-B	R+1467.47	14.44
2	N82°43'39"E	512.93	21	N84°54'25"E	453.50	B-C	R+1308.32	22.97
3	N37°54'51"E	376.79	22	S60°33'35"E	203.10	C-D	R+1181.01	30.92
4	N17°29'29"E	82.21	23	S60°32'35"E	199.30	D-E	R+1076.84	31.01
5	N63°36'14"E	758.48	24	S23°44'35"E	522.90	E-F	R+990.04	1.60
6	N78°21'16"E	327.16	25	S48°41'35"E	59.00	F-G	N20°54'22"W	156.13
7	N14°32'13"E	597.13	26	S73°37'35"E	753.50	G-H	R+920.04	136.14
8	R-680	859.72	27	S39°45'35"E	449.11	H-I	R+1006.84	28.99
9	R-600	300.18	28	S69°55'35"E	397.90	I-J	R+1111.01	29.09
10	S14°07'40"E	298.39	29	S18°29'35"E	442.80	J-K	R+1238.32	29.18
11	R-100	162.08	30	S33°51'35"E	397.80	K-L	R+1397.47	29.27
12	R-1900	219.95	31	S63°11'35"E	455.70	L-M	R+1602.09	29.36
13	N79°38'28"E	541.62	32	S74°30'35"E	485.80	M-N	R+1874.91	29.45
14	N85°21'06"E	251.25	33	S43°18'03"E	646.32	N-O	R+2256.88	29.54
15	N79°38'28"E	120.77	34	S53°41'57"E	80.00	O-P	R+2829.83	29.63
16	S45°47'16"E	736.75	35	N48°21'00"E	620.00	P-Q	R+3784.75	29.73
17	S47°50'43"E	641.69				Q-R	R+5694.60	29.82
18	S52°09'35"E	399.90				R-S	R+11424.17	29.91
19	S51°50'51"E	106.24				S-T	S61°39'07"E	98.05



NO.	BEARING	DIST.
36	N36°35'40"W	218.0
37	N49°38'37"W	834.58
38	N43°28'34"E	207.48
39	N18°25'34"E	188.20
40	S87°6'34"W	78.61
41	N46°10'56"W	335.53
42	S75°22'34"W	177.27
43	N82°0'26"W	94.74
44	N61°45'56"W	94.24
45	N46°56'56"W	150.06
46	N62°12'56"W	300.02
47	N27°56'26"W	223.89
48	N57°12'56"W	576.93
49	N48°30'44"W	301.60
50	N66°0'41"W	1297.76
51	S82°10'32"W	24.39
52	S81°46'21"W	861.6

NO.	BEARING	DIST.
53	S14°55'53"E	189.03
54	S76°45'0"W	477.41
55	S47°45'51"W	412.07
56	S32°27'34"W	625.8
57	S33°54'29"W	696.46
58	S17°53'46"W	593.77
59	R-3334	604.07
60	R-2000	188.55
61	R-2680	592.29
62	R-2780	262.75

NOTE: THIS MAP WAS PREPARED FOR ASSESSMENT PURPOSES ONLY. NO LIABILITY IS ASSUMED FOR THE ACCURACY OF THE INFORMATION DELINEATED HEREON. ASSESSOR'S PARCELS MAY NOT COMPLY WITH LOCAL LOT SPLIT OR BUILDING SITE ORDINANCES.

2-5-62 G.C.C. 7-1  
ASSESSOR'S MAP  
BOOK 111 PAGE 01  
CONTRA COSTA COUNTY, CALIF.  
Sanborn Date : 05/03/1999