

A- LOTS 3&5 RESUB. LOTS 11 & 12, F. GALINDO ESTATES M.B.263-109 263 OR 109

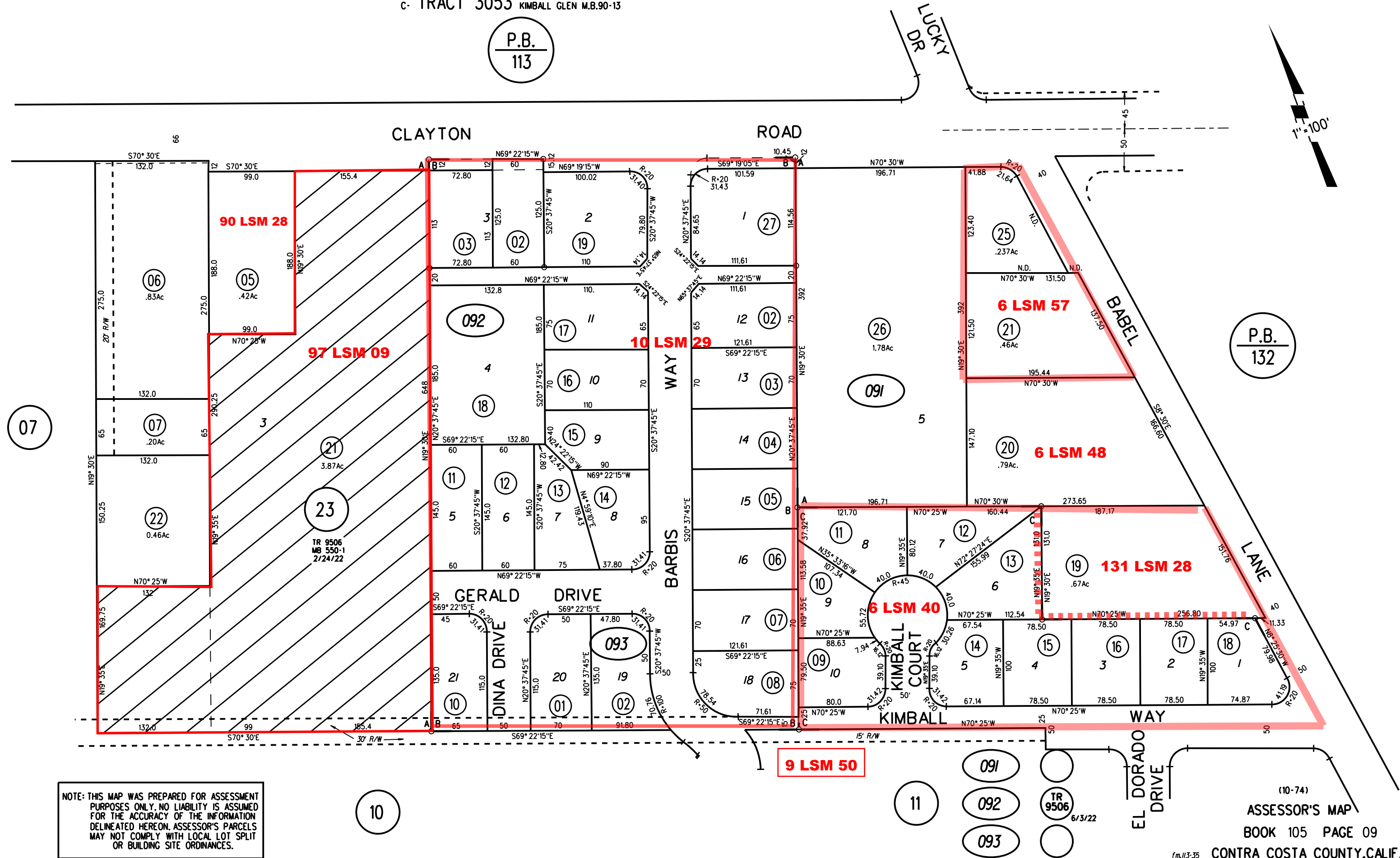
B- EL MONTE TERRACE M.B.44-1

C- TRACT 3053 KIMBALL GLEN M.B.90-13

P.B.
113

LUCKY
DR

1"=100'



NOTE: THIS MAP WAS PREPARED FOR ASSESSMENT PURPOSES ONLY. NO LIABILITY IS ASSUMED FOR THE ACCURACY OF THE INFORMATION DELINEATED HEREON. ASSESSOR'S PARCELS MAY NOT COMPLY WITH LOCAL LOT SPLIT OR BUILDING SITE ORDINANCES.

(10-74)
ASSESSOR'S MAP
BOOK 105 PAGE 09
CONTRA COSTA COUNTY, CALIF.
Sanborn Date : 28/05/1999