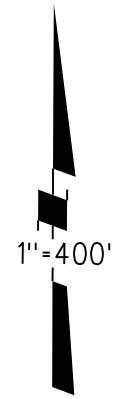


GOVERNMENT RANCH VOL D PG 87 (POR NAVY AMMUNITION DEPOT)

A- TRACT 9024 MB 499-20 (PORT CHICAGO PLAZA) 11/27/06  
AMENDED MB 508-43 (PORT CHICAGO PLAZA, CONDOS) 1/6/09



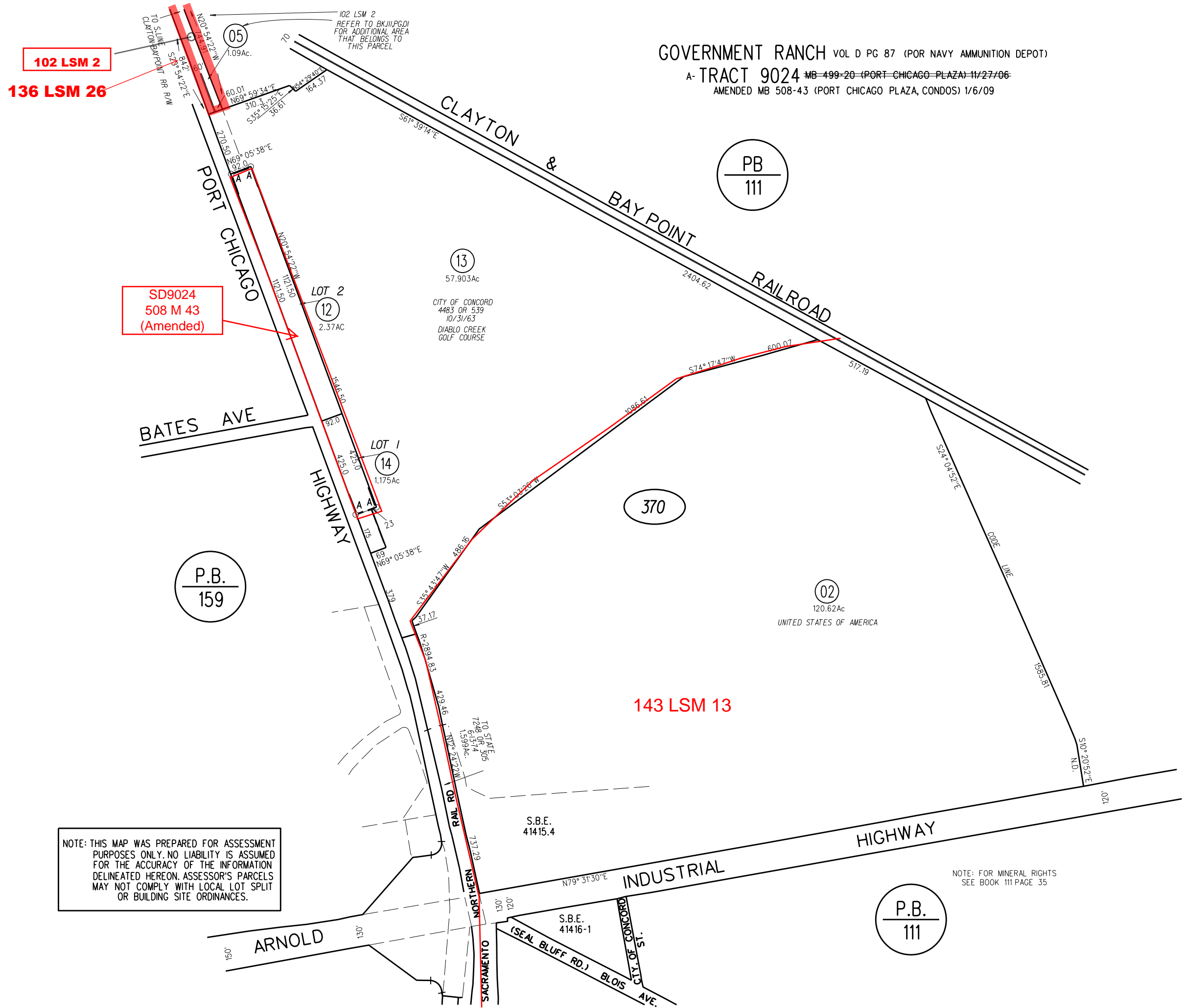
102 LSM 2  
136 LSM 26

SD9024  
508 M 43  
(Amended)

143 LSM 13

NOTE: THIS MAP WAS PREPARED FOR ASSESSMENT PURPOSES ONLY. NO LIABILITY IS ASSUMED FOR THE ACCURACY OF THE INFORMATION DELINEATED HEREON. ASSESSOR'S PARCELS MAY NOT COMPLY WITH LOCAL LOT SPLIT OR BUILDING SITE ORDINANCES.

NOTE: FOR MINERAL RIGHTS SEE BOOK 111 PAGE 35



P.B.  
159

PB  
111

370

02  
120.62Ac  
UNITED STATES OF AMERICA

P.B.  
111

370

13,14  
10/8/14