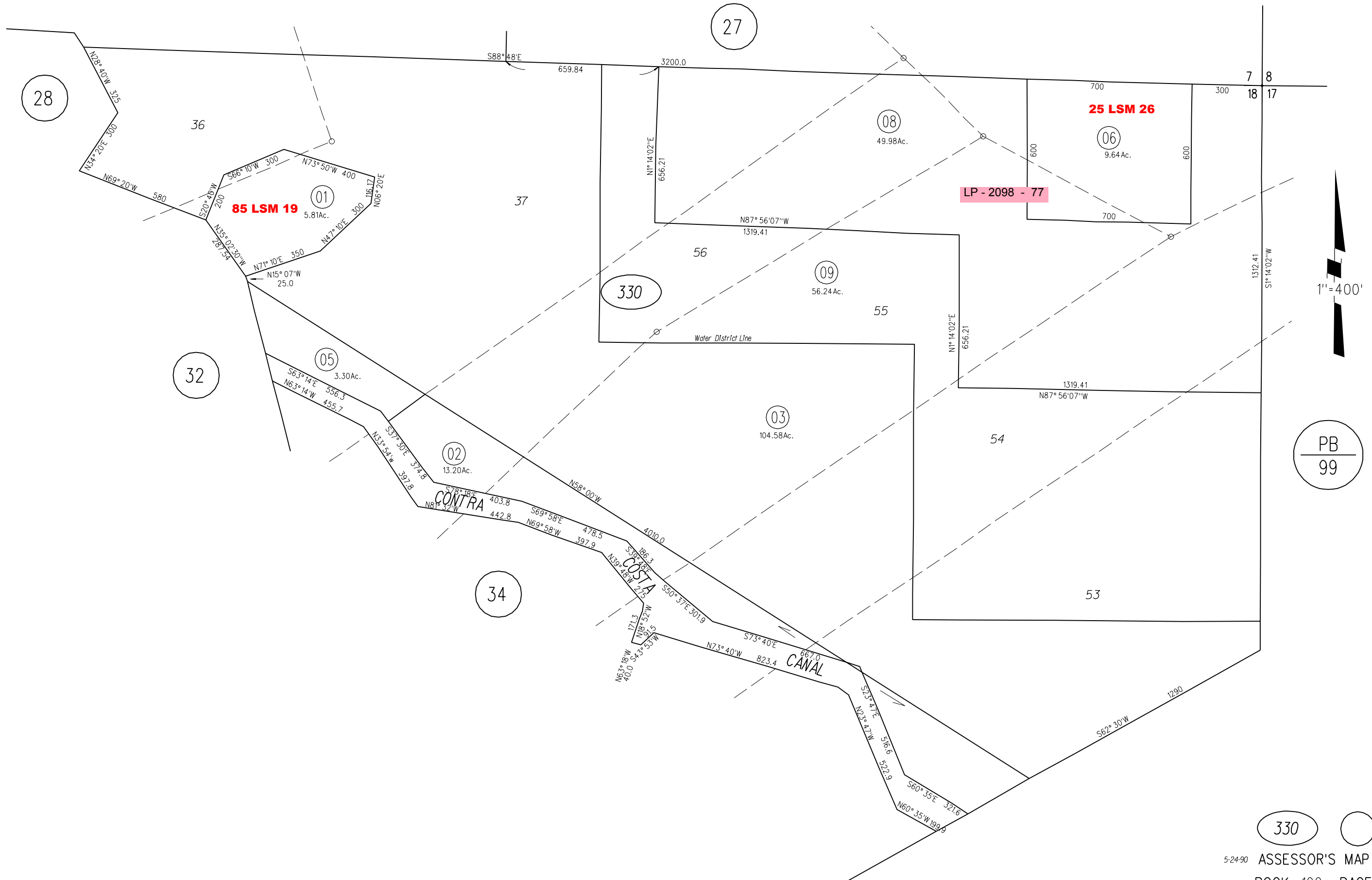


POR. OF GOV'T LOTS 36,37,53 TO 56 INCL.
SEC.18 T2N R1W M.D.B.M.

TAX CODE AREA



1"=400'

PB
99

330

5-24-90 ASSESSOR'S MAP

BOOK 100 PAGE 33

7-22 & 102-30 CONTRA COSTA COUNTY, CALIF.