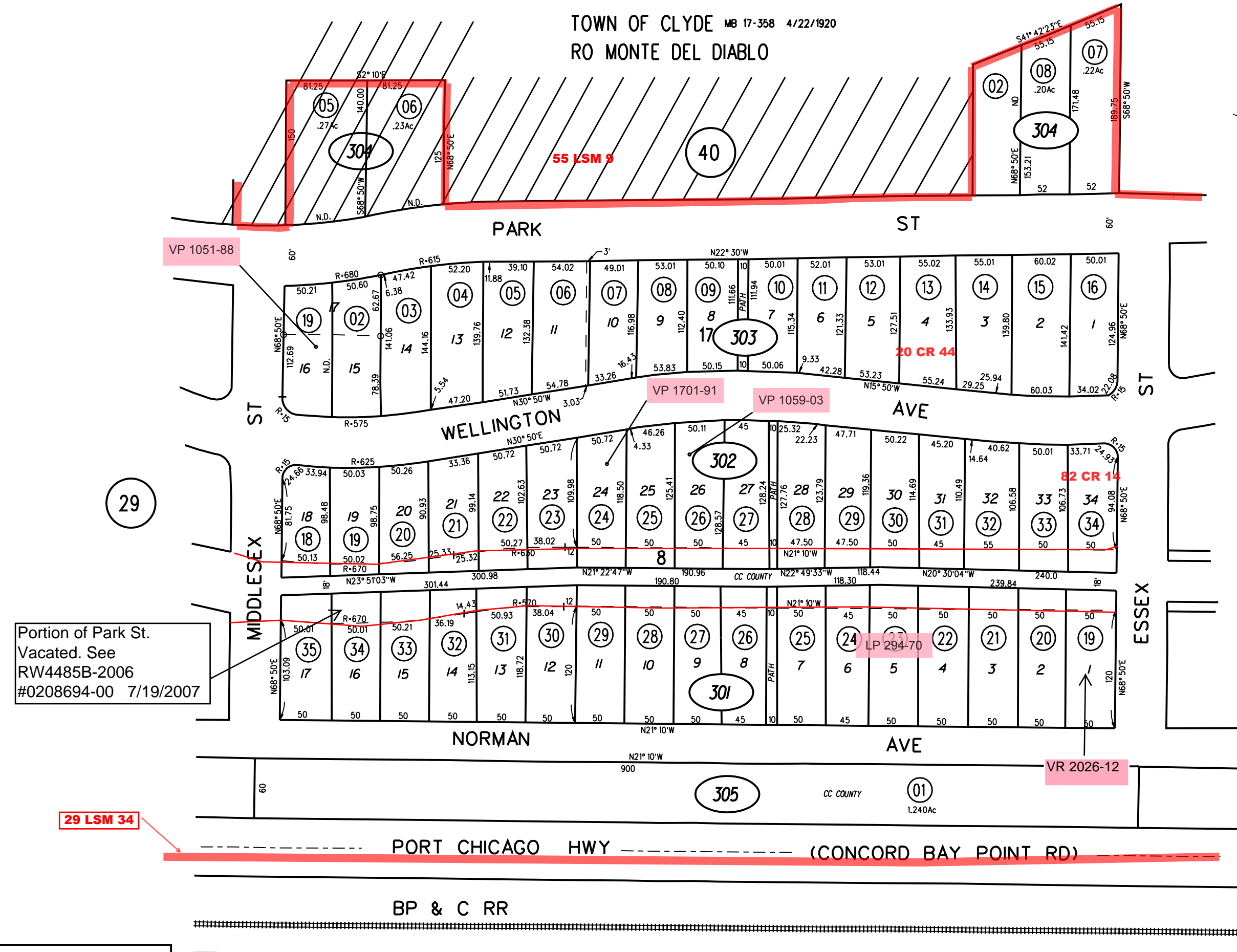
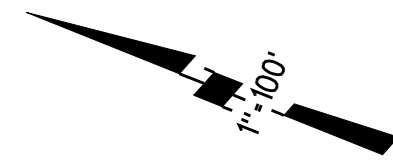


TOWN OF CLYDE MB 17-358 4/22/1920
RO MONTE DEL DIABLO



Portion of Park St.
Vacated. See
RW4485B-2006
#0208694-00 7/19/2007

NOTE: THIS MAP WAS PREPARED FOR ASSESSMENT PURPOSES ONLY. NO LIABILITY IS ASSUMED FOR THE ACCURACY OF THE INFORMATION DELINEATED HEREON. ASSESSOR'S PARCELS MAY NOT COMPLY WITH LOCAL LOT SPLIT OR BUILDING SITE ORDINANCES.

152 LSM 28
MILITARY OCEAN
TERMINAL CONCORD

PB
159

- 301
- 302
- 303
- 304
- 305
- 35
2/17/09
- 34
2/17/09
- 01
7/1/11