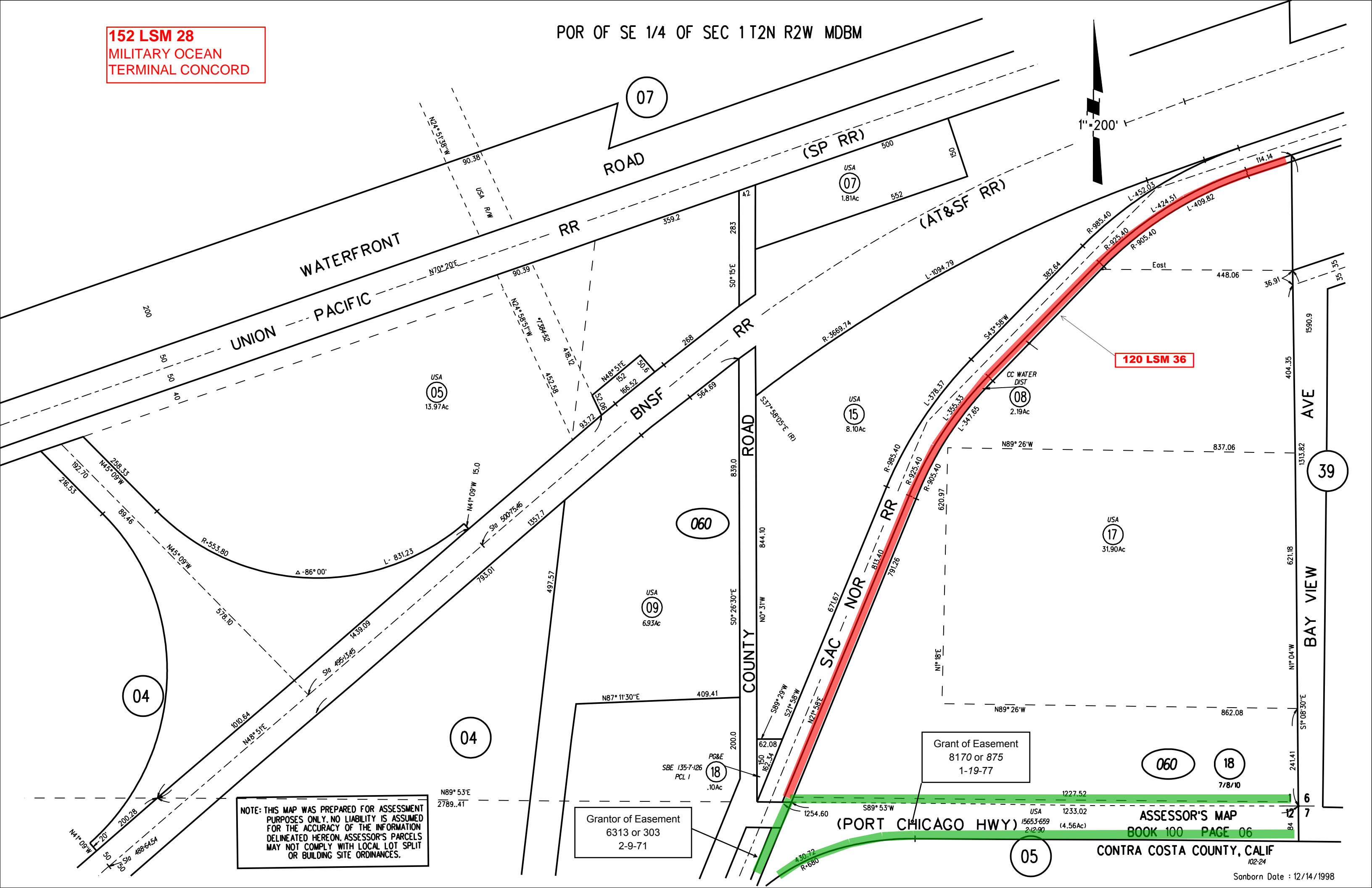


152 LSM 28
MILITARY OCEAN
TERMINAL CONCORD

POR OF SE 1/4 OF SEC 1 T2N R2W MDBM

1"=200'



NOTE: THIS MAP WAS PREPARED FOR ASSESSMENT PURPOSES ONLY. NO LIABILITY IS ASSUMED FOR THE ACCURACY OF THE INFORMATION DELINEATED HEREON. ASSESSOR'S PARCELS MAY NOT COMPLY WITH LOCAL LOT SPLIT OR BUILDING SITE ORDINANCES.

Grantor of Easement
6313 or 303
2-9-71

Grant of Easement
8170 or 875
1-19-77

ASSESSOR'S MAP
BOOK 100 PAGE 06

CONTRA COSTA COUNTY, CALIF
102-24

Sanborn Date : 12/14/1998