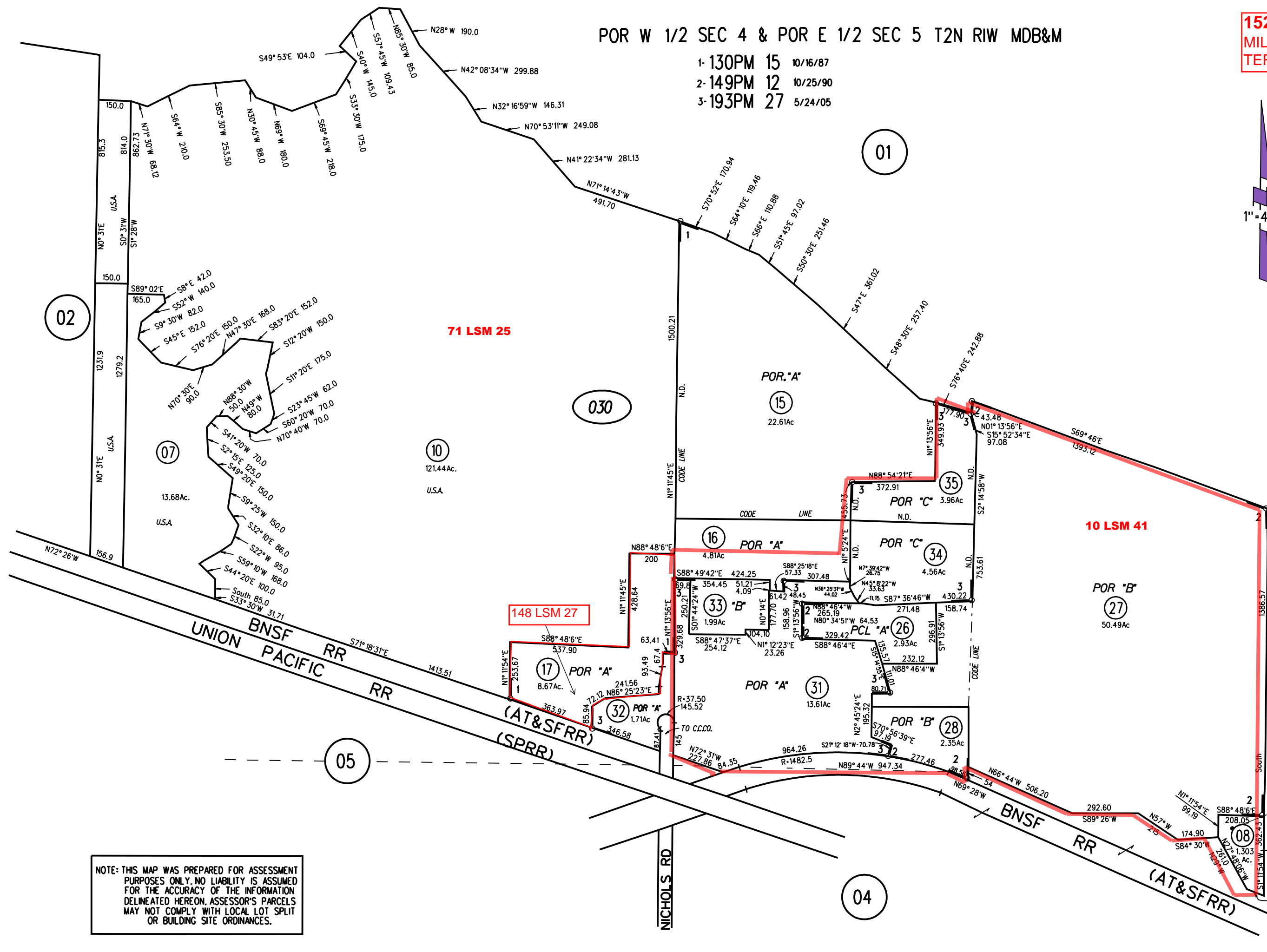
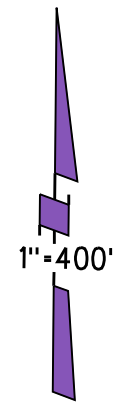


152 LSM 28
MILITARY OCEAN
TERMINAL CONCORD

POR W 1/2 SEC 4 & POR E 1/2 SEC 5 T2N RIW MDB&M

- 1- 130PM 15 10/16/87
- 2- 149PM 12 10/25/90
- 3- 193PM 27 5/24/05



NOTE: THIS MAP WAS PREPARED FOR ASSESSMENT PURPOSES ONLY. NO LIABILITY IS ASSUMED FOR THE ACCURACY OF THE INFORMATION DELINEATED HEREON. ASSESSOR'S PARCELS MAY NOT COMPLY WITH LOCAL LOT SPLIT OR BUILDING SITE ORDINANCES.

5122 or 215
5-17-66
030
193
PM27
5/19/06