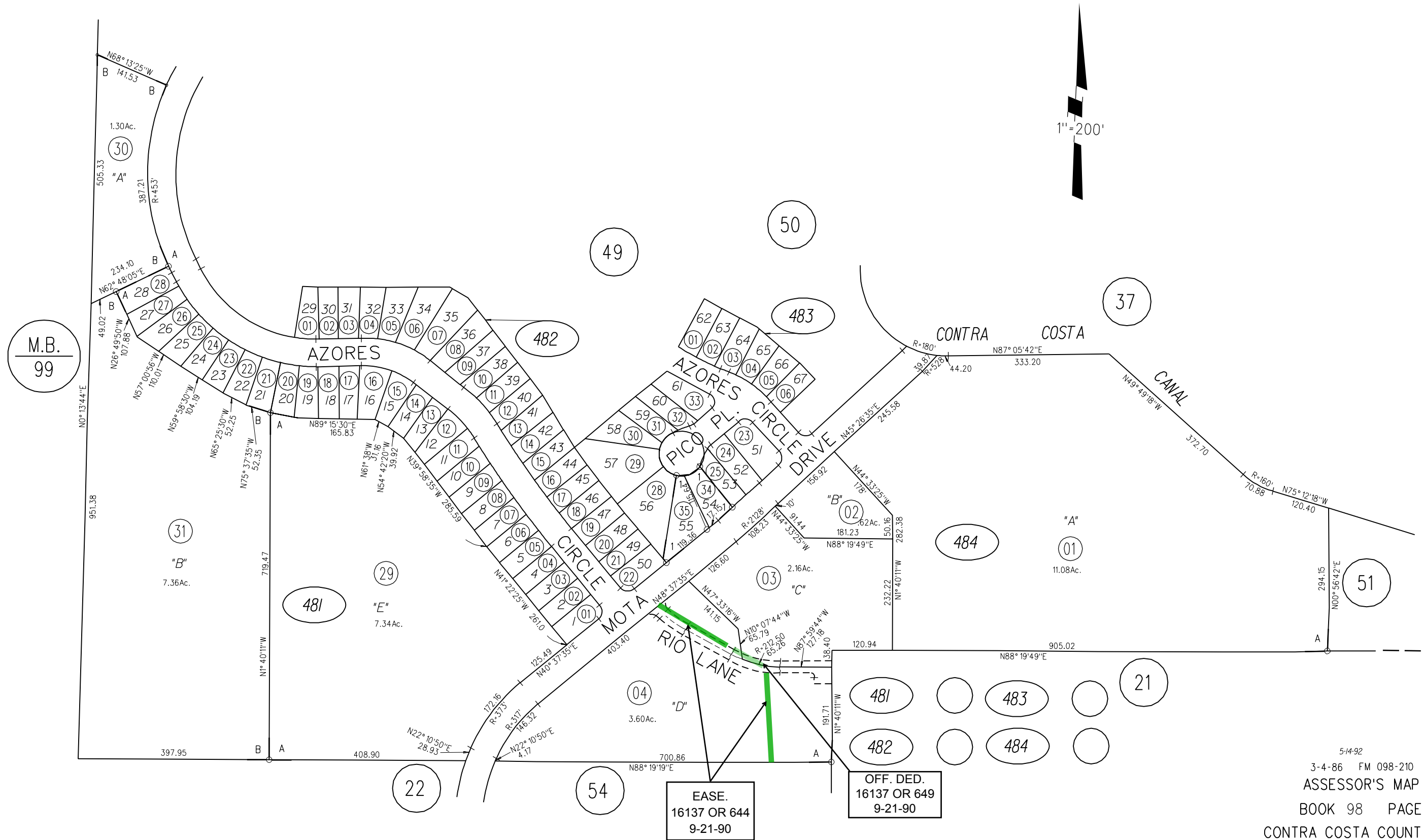


A - 1986 ROLL - POR. TRACT 6450
 B - 1986 ROLL - POR. TRACT 6537
 1- 80 L.S.M. 23 8-11-86

(MOTA RANCH UNIT NO.1) M.B. 294-42 "CALIF. LANDING PHASE III"
 ANNEXATION & SUPPLEMENTAL C.C.&R.'S 12880/38 5.14.86
 (MOTA RANCH UNIT NO.2) M.B. 296-1 (P.U.D.)



EASE.
 16137 OR 644
 9-21-90

OFF. DED.
 16137 OR 649
 9-21-90