

SE 1/4 SEC. 9 & SW 1/4 SEC. 10 T2N R1W MDBM

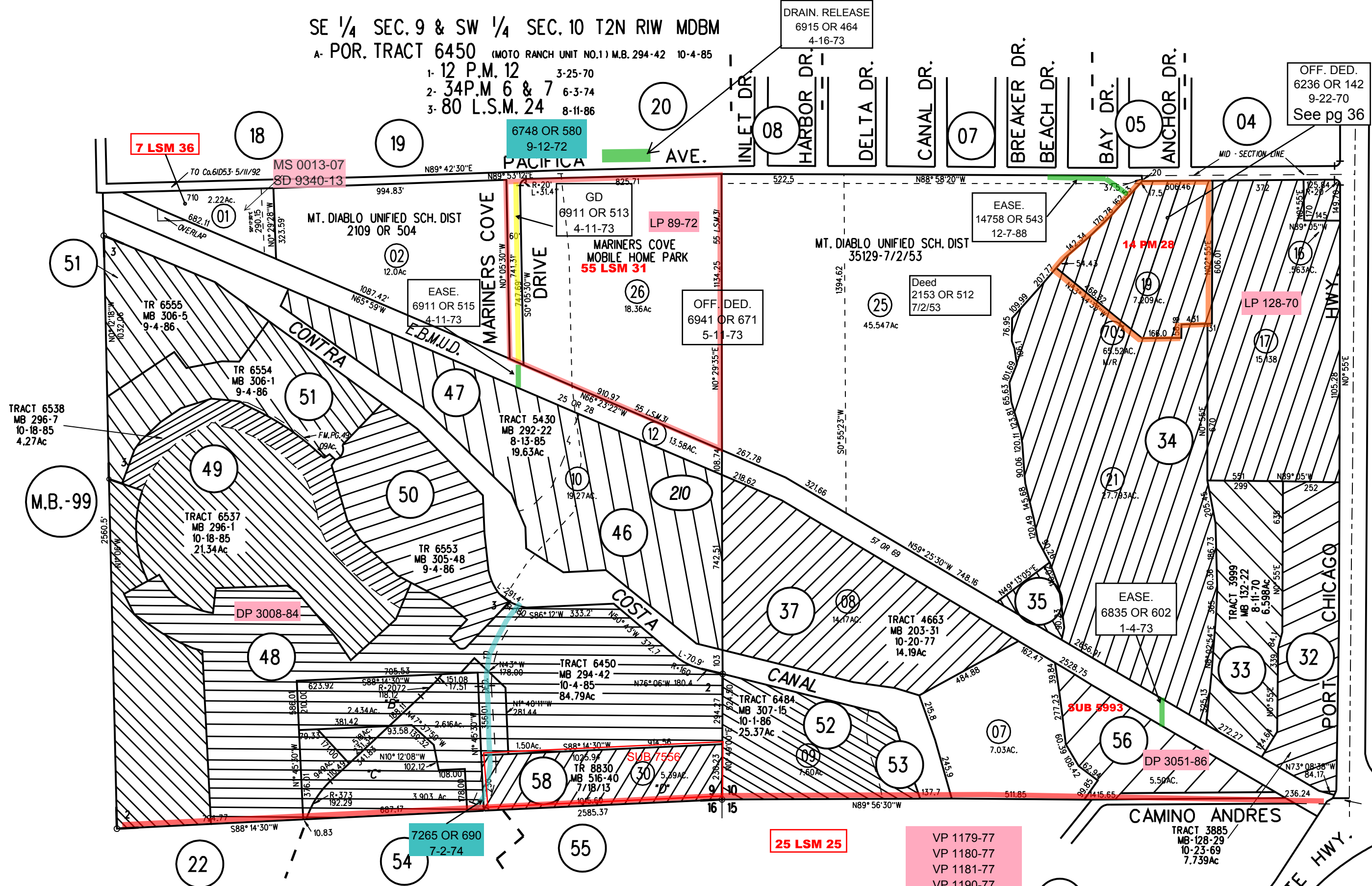
A- POR. TRACT 6450 (MOTO RANCH UNIT NO.1) M.B. 294-42 10-4-85

- 1- 12 P.M. 12 3-25-70
- 2- 34 P.M. 6 & 7 6-3-74
- 3- 80 L.S.M. 24 8-11-86

DRAIN. RELEASE
6915 OR 464
4-16-73

OFF. DED.
6236 OR 142
9-22-70
See pg 36

1" = 400'



NOTE: THIS MAP WAS PREPARED FOR ASSESSMENT PURPOSES ONLY. NO LIABILITY IS ASSUMED FOR THE ACCURACY OF THE INFORMATION DELINEATED HEREON. ASSESSOR'S PARCELS MAY NOT COMPLY WITH LOCAL LOT SPLIT OR BUILDING SITE ORDINANCES.

VP 1179-77
VP 1180-77
VP 1181-77
VP 1190-77
*ALL IN PCL. "B"
BUT NOT MAPPED