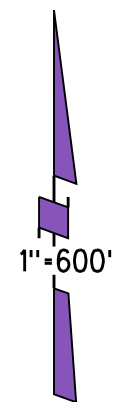
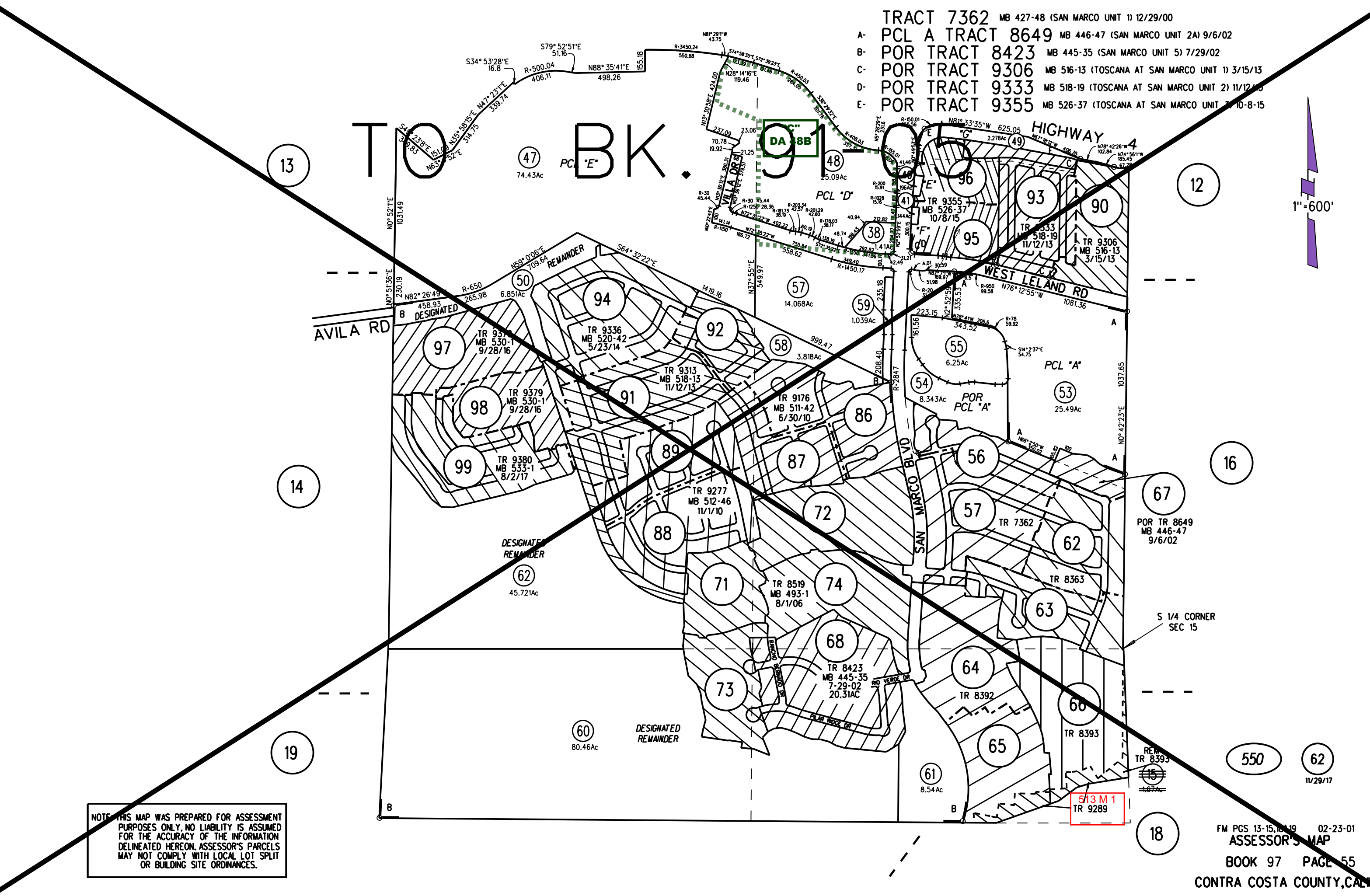


TRACT 7362 MB 427-48 (SAN MARCO UNIT 1) 12/29/00

- A- PCL A TRACT 8649 MB 446-47 (SAN MARCO UNIT 2A) 9/6/02
- B- POR TRACT 8423 MB 445-35 (SAN MARCO UNIT 5) 7/29/02
- C- POR TRACT 9306 MB 516-13 (TOSCANA AT SAN MARCO UNIT 1) 3/15/13
- D- POR TRACT 9333 MB 518-19 (TOSCANA AT SAN MARCO UNIT 2) 11/12/13
- E- POR TRACT 9355 MB 526-37 (TOSCANA AT SAN MARCO UNIT 7) 10-8-15

T O B K .



NOTE: THIS MAP WAS PREPARED FOR ASSESSMENT PURPOSES ONLY. NO LIABILITY IS ASSUMED FOR THE ACCURACY OF THE INFORMATION DELINEATED HEREON. ASSESSOR'S PARCELS MAY NOT COMPLY WITH LOCAL LOT SPLIT OR BUILDING SITE ORDINANCES.