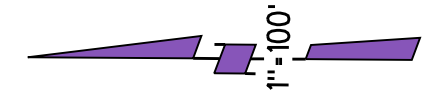


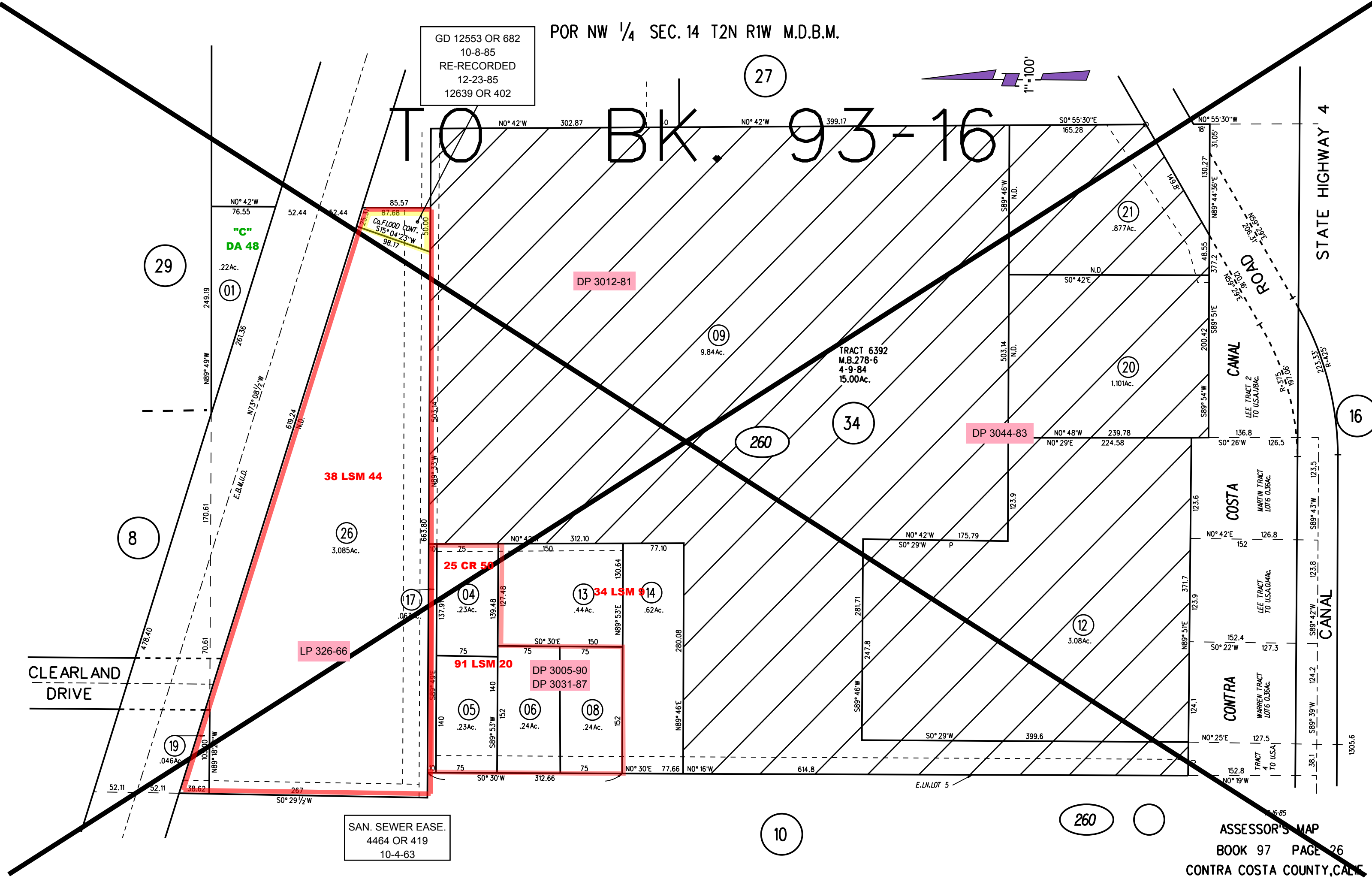
POR NW 1/4 SEC. 14 T2N R1W M.D.B.M.

GD 12553 OR 682
10-8-85
RE-RECORDED
12-23-85
12639 OR 402

27



TO BK. 93-16



29

NO° 42'W
76.55
52.44
52.44
22Ac.
"C"
DA 48

85.57
87.68
50.00
50.00
98.17
Co. FLOOD CONT.
S15° 04' 23" W

DP 3012-81

09
9.84Ac.

TRACT 6392
M.B. 278-6
4-9-84
15.00Ac.

21
.877Ac.

20
1.101Ac.

DP 3044-83

8

38 LSM 44

26
3.085Ac.

260

34

25 CR 50

04
.23Ac.

13
.44Ac.

14
.62Ac.

91 LSM 20

05
.23Ac.

06
.24Ac.

08
.24Ac.

DP 3005-90
DP 3031-87

CLEARLAND DRIVE

LP 326-66

19
.046Ac.

12
3.08Ac.

COSTA

CONTRA

STATE HIGHWAY 4

16

CANAL

SAN. SEWER EASE.
4464 OR 419
10-4-63

10

260