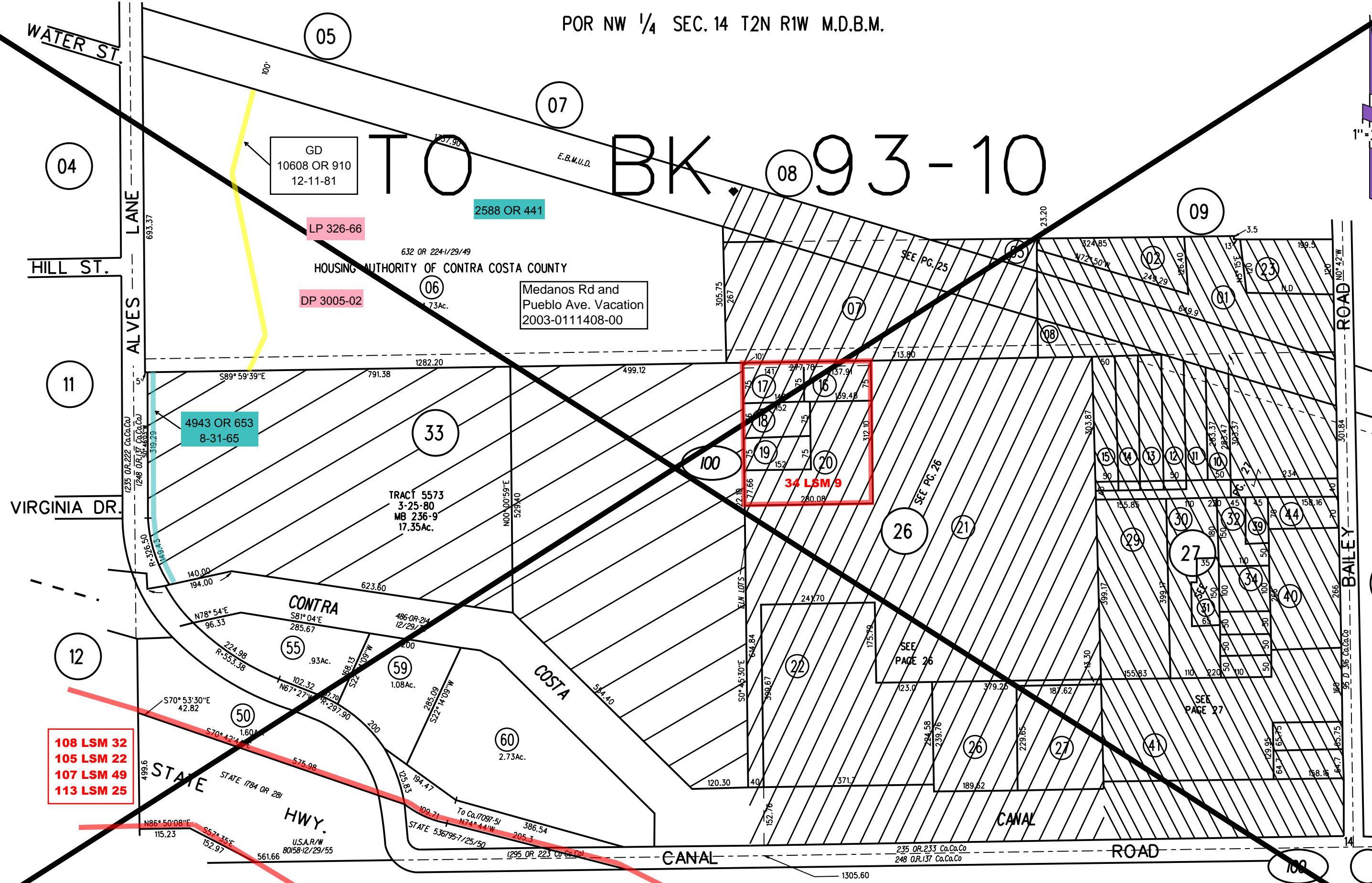


POR NW 1/4 SEC. 14 T2N R1W M.D.B.M.

TO BK. 93-10

1"=200'



108 LSM 32
 105 LSM 22
 107 LSM 49
 113 LSM 25

GD
 10608 OR 910
 12-11-81

LP 326-66

DP 3005-02

2588 OR 441

4943 OR 653
 8-31-65

34 LSM 9

HOUSING AUTHORITY OF CONTRA COSTA COUNTY
 Medanos Rd and
 Pueblo Ave. Vacation
 2003-0111408-00

CONTRA
 S81° 04' E
 285.67

TRACT 5573
 3-25-80
 MB 236-9
 17.35Ac.

STATE HWY.
 STATE 1784 OR 281
 U.S.A.R/W
 80158-12/29/55