

A- POR. N.W. 1/4 SEC. 14, T2N, R1W. M.D.B.M.  
B-1960 ROLL- TRACT 2656 M.B. 72-48  
1- 152PM47 6-7-91

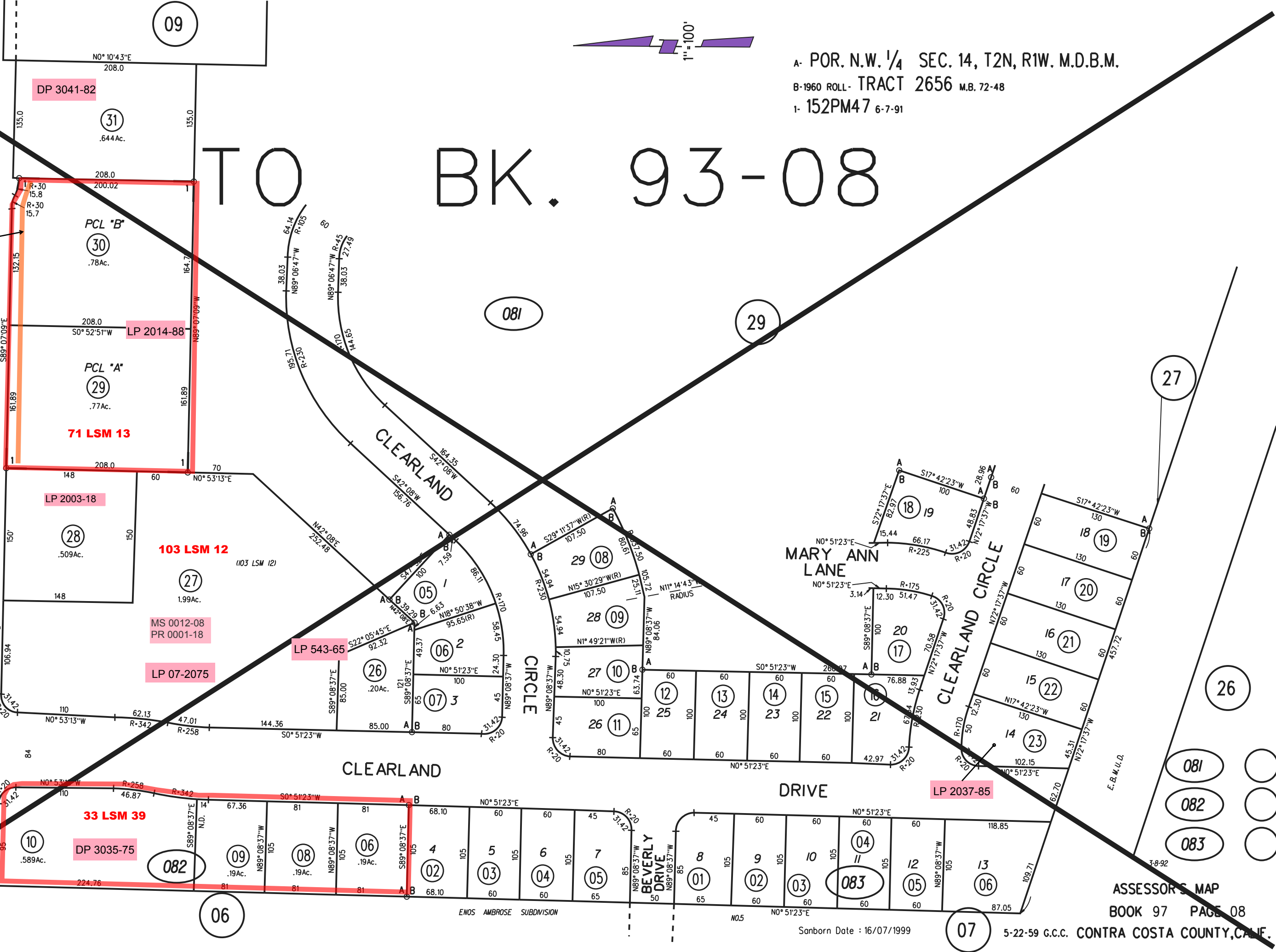
# TO BK. 93-08

SEWER EASE.  
712 OR 134  
11-20-42.

OFFER OF DED.  
16651 OR 103  
6-7-91

M.B.  
98

WILLOW PASS ROAD



DP 3041-82

PCL "B"

PCL "A"

71 LSM 13

LP 2003-18

103 LSM 12

MS 0012-08  
PR 0001-18

LP 07-2075

LP 543-65

33 LSM 39

DP 3035-75

LP 2037-85

ENOS AMBROSE SUBDIVISION

Sanborn Date : 16/07/1999

ASSESSOR'S MAP  
BOOK 97 PAGE 08  
5-22-59 G.C.C. CONTRA COSTA COUNTY, CALIF.

081  
082  
083