

POR SE 1/4 SEC II T2N R1W MDBM 20 M 546

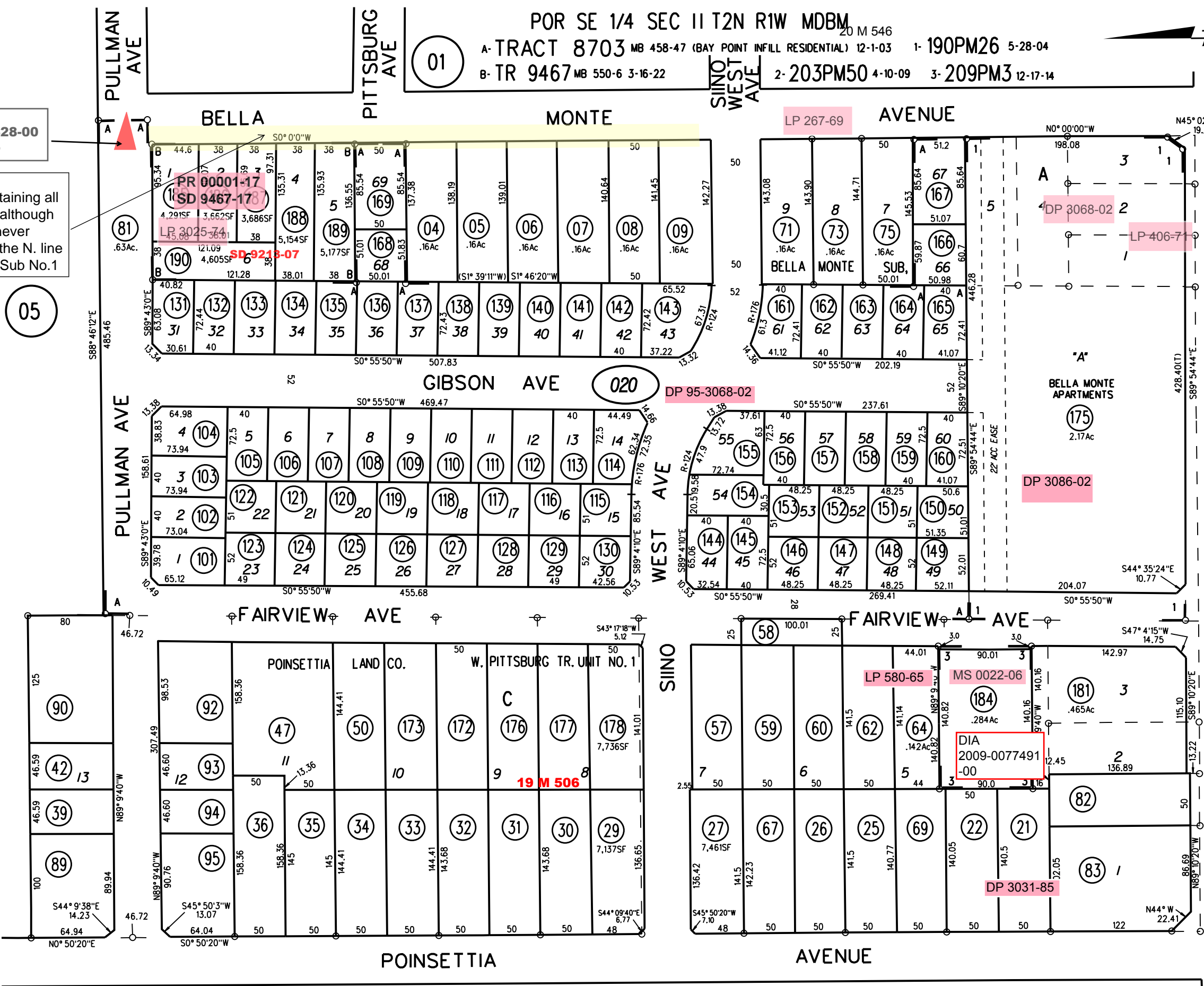
A- TRACT 8703 MB 458-47 (BAY POINT INFILL RESIDENTIAL) 12-1-03 1- 190PM26 5-28-04

B- TR 9467 MB 550-6 3-16-22 2- 203PM50 4-10-09 3- 209PM3 12-17-14



CC
2004-0220428-00
6-2-04

Note:
County is maintaining all
of Bella Monte although
west half was never
accepted from the N. line
of Bella Monte Sub No.1



05

020

04

03

PB
95

020

TR
9467
6/3/22

NOTE: THIS MAP WAS PREPARED FOR ASSESSMENT PURPOSES ONLY. NO LIABILITY IS ASSUMED FOR THE ACCURACY OF THE INFORMATION DELINEATED HEREON. ASSESSOR'S PARCELS MAY NOT COMPLY WITH LOCAL LOT SPLIT OR BUILDING SITE ORDINANCES.