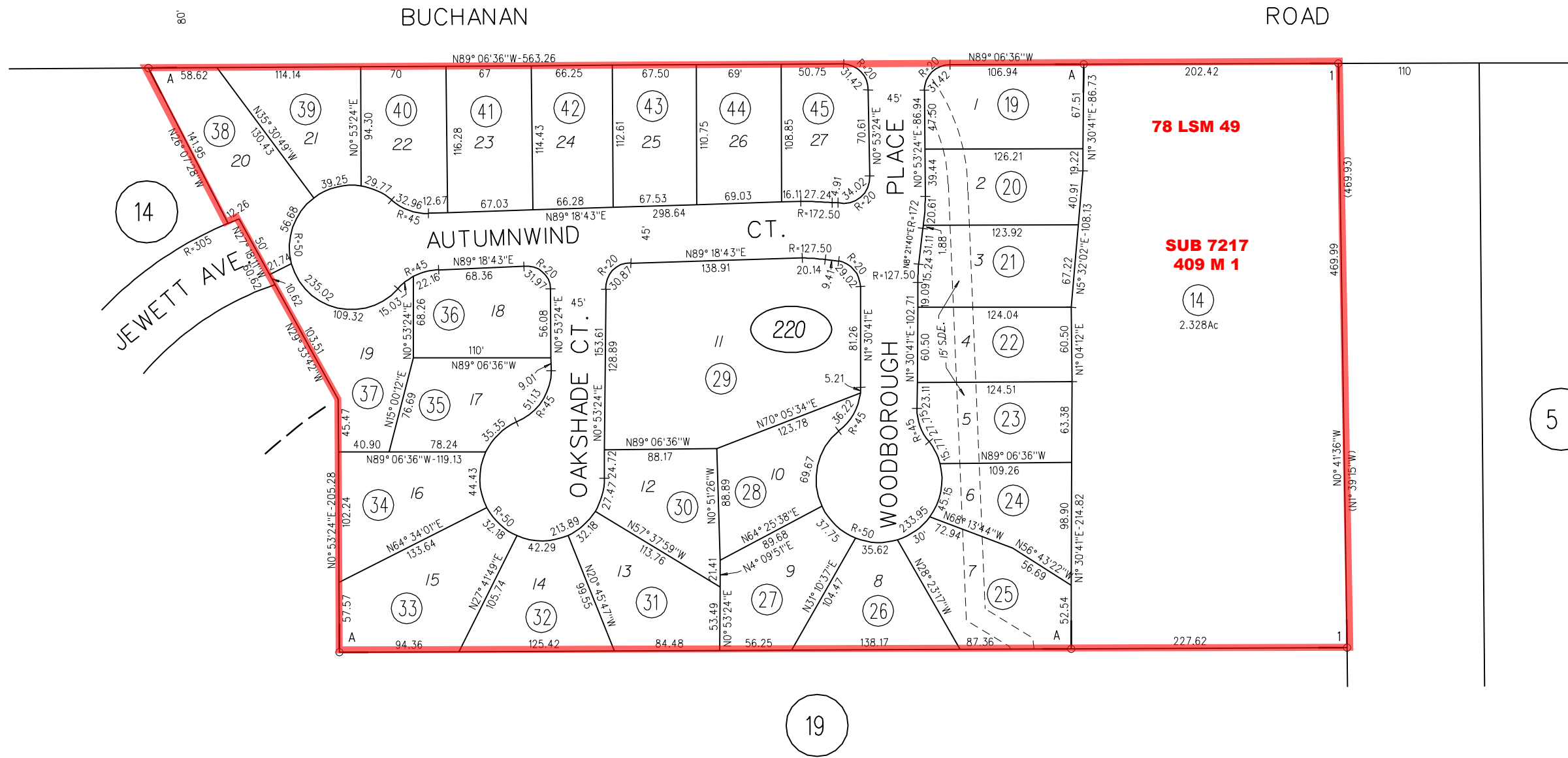


POR. SEC. 28 T2N. R1E. MDB&M.

1-96 LSM 28 10-25-91

A-1995 ROLL- TRACT 7892 M.B.376-36 (STONEGATE)

PB
88



REVISED	CHANGE	BY
3/26/92	CRE. 12,13,14/CORR.	TA
6-16-92	PCLS 16 & 17	BC
1-10-95	TRACT 7892	KR

220